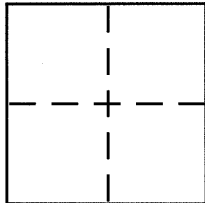


# CORNER RECORD

Document Number CR 7488

City of BERKELEY County of ALAMEDA, California

Brief Legal Description CITY OF BERKELEY MONUMENT B3069



## CORNER TYPE

Government Corner ☐ Control ☒  
 Meander ☐ Property ☐  
 Rancho ☐ Other ☐  
 Date of Survey AUGUST 12, 2015

## COORDINATES (Optional)

N. \_\_\_\_\_  
 E. \_\_\_\_\_  
 Zone \_\_\_\_\_ NAD27 ☐ NAD83 ☐  
 NAD83 Epoch \_\_\_\_\_  
 Elev. \_\_\_\_\_  
 Vert. Datum: NGVD29 ☐ NAVD88 ☐  
 Meas. Units: Metric ☐ Imperial ☐

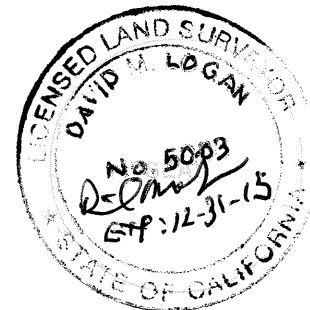
Corner – Left as found ☒ Found and tagged ☐ Established ☐ Reestablished ☐ Rebuilt ☐

Identification and type of corner found: Evidence used to identify or procedure used to establish or reestablish the corner:  
IN COMPLIANCE WITH SECTION 8771 OF THE PROFESSIONAL LAND SURVEYORS' ACT, THIS CORNER  
RECORD IS BEING FILED TO ESTABLISH THE POSITION OF AN EXISTING MONUMENT PRIOR TO  
SANITARY SEWER RECONSTRUCTION. (SEE PAGE 2)

A description of the physical condition of the monument as found and as set or reset: \_\_\_\_\_  
(SEE PAGE 2)

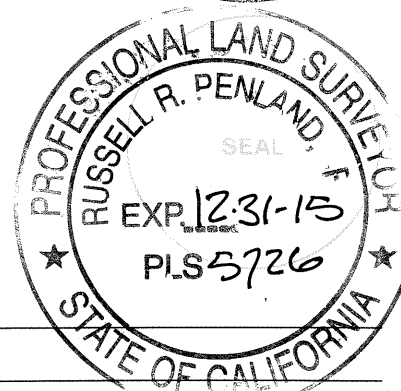
## SURVEYOR'S STATEMENT

This Corner Record was prepared by me or under my direction in conformance with  
 the Land Surveyor's Act on AUGUST 12, 2015  
 Signed [Signature] P.L.S. or R.C.E. No. 5003

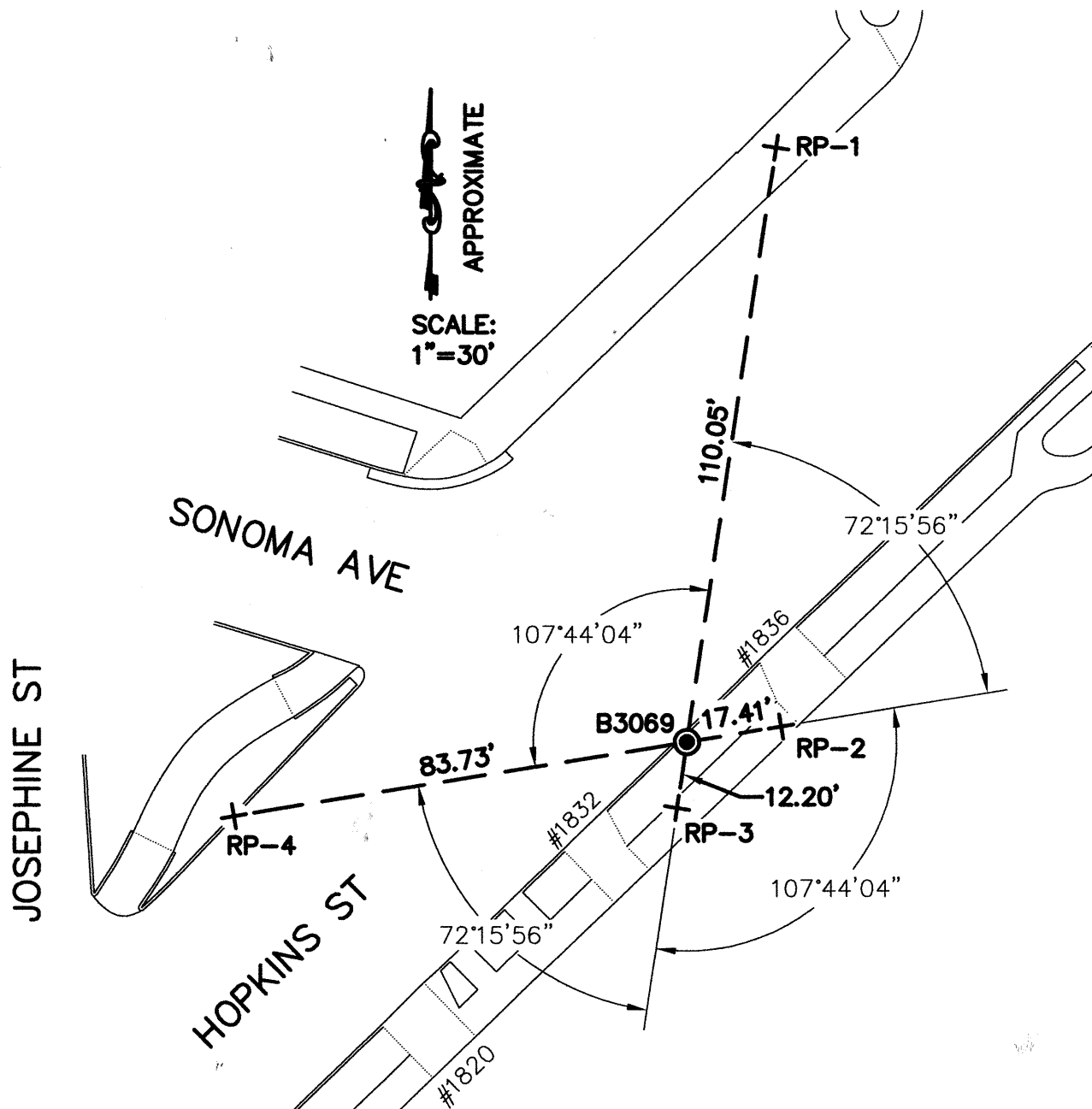


## COUNTY SURVEYOR'S STATEMENT

This Corner Record was received 8-14-15  
 and examined and filed 9-10-15  
 Signed [Signature] P.L.S. or R.C.E. No. 5726  
 Title COUNTY SURVEYOR



County Surveyor's Comment \_\_\_\_\_



#### LEGEND

⊙ 2-1/2" BRASS DISC EAST BAY MUNICIPAL UTILITY DISTRICT MONUMENT (BENCHMARK) WITH A CROSS SET IN THE PLANTER STRIP

+ SET REFERENCE CROSS

#### NOTE:

THE EXISTING MONUMENT AS SHOWN IS REFERENCED BY STRAIGHT LINES BETWEEN RP-1 TO RP-3 AND RP-2 TO RP-4.