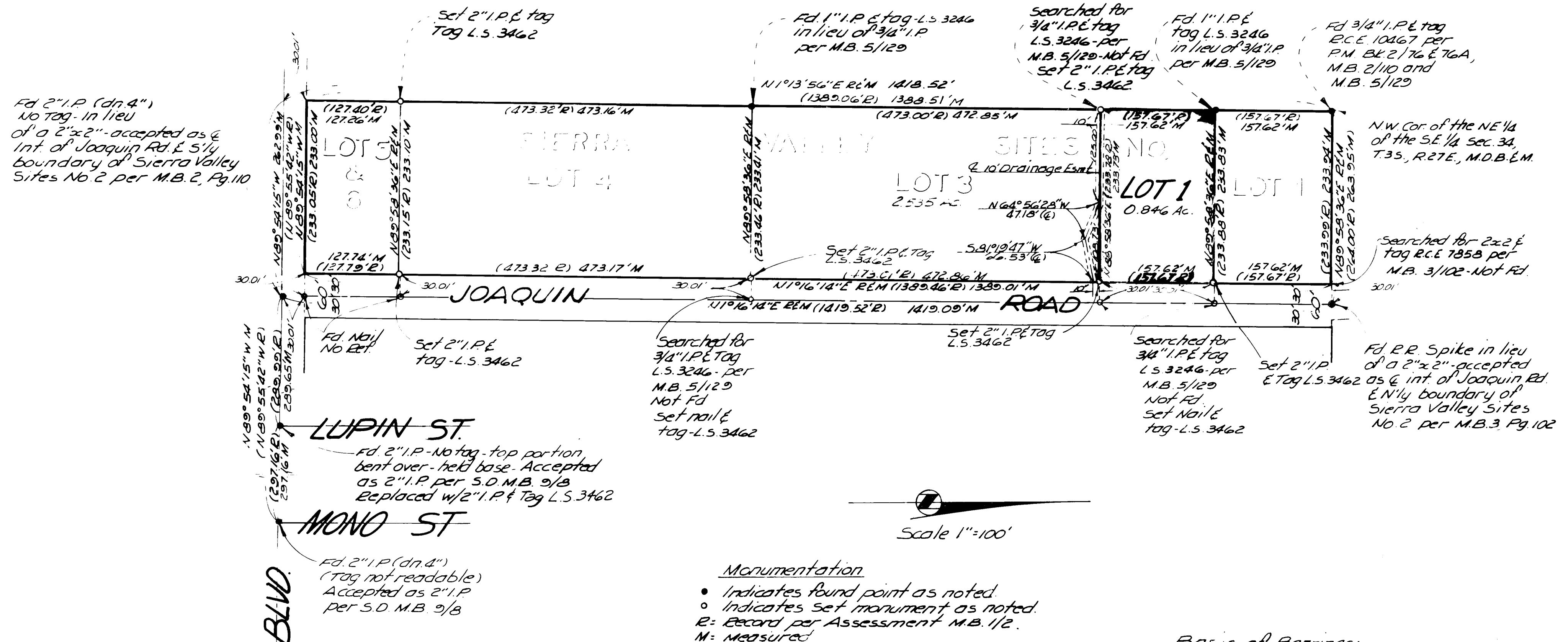


IN THE COUNTY OF MONO, STATE OF CALIFORNIA,  
BEING A RESUBDIVISION OF LOT 2 OF SIERRA VALLEY  
TRACT No. 2, AS PER MAP RECORDED IN BOOK 1, PAGE 2 OF  
ASSESSMENT MAPS, IN THE OFFICE OF THE COUNTY  
RECORDER OF SAID COUNTY AND ALSO BEING LOC-  
ATED IN THE SE 1/4 OF SECTION 34, T.35. R.27E. M.D.M.

FOR CONDOMINIUM PURPOSES



### Basis of Bearings:

The record bearing of N1°16'14"E along the center line of Joaquin Road, Sierra Valley Tract No. 2, Book 1 of Assessment Maps, Pages 2 & 2A on file in the Mono County Recorder's Office was used as the basis of Bearings for this map.

# FOREST CREEK CONDOMINIUM PLAN

TRACT No. 36-130, MAMMOTH LAKES, CALIFORNIA.

TRACT    MAP