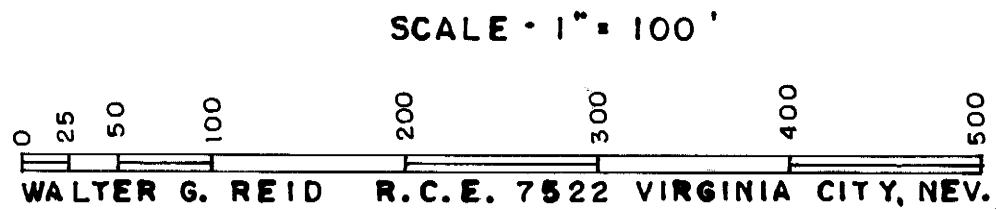


PARCEL MAP NO. 31 - 19  
PARCEL IN NE1/4 SW1/4 SEC. 29, T.8N., R. 23E., M.D.B & M.  
PORTION OF LOT H-2  
MILL CREEK RANCH SUBDIVISION (SHEET 3 OF 3)  
RECORDED BK. 2, PAGE 27-B OF MAPS  
AND LOT 24 C, BOOK 3, PAGE 87, MAPS  
MONO COUNTY RECORDS



PLANNING COMMISSION'S CERTIFICATE

THIS IS TO CERTIFY THAT THIS PARCEL MAP IS IN ACCORD WITH THE APPROVED TENTATIVE MAP OF THE PARCELS.

*W. G. Bell* Chairman  
MONO COUNTY PLANNING COMMISSION

COUNTY SURVEYOR'S CERTIFICATE

THIS MAP HAS BEEN EXAMINED THIS 28<sup>th</sup> DAY OF May, 1974, FOR CONFORMANCE WITH THE REQUIREMENTS OF SECTION 11575 OF THE SUBDIVISION MAP ACT.

*Richard L. Cool, P.E.*  
COUNTY SURVEYOR

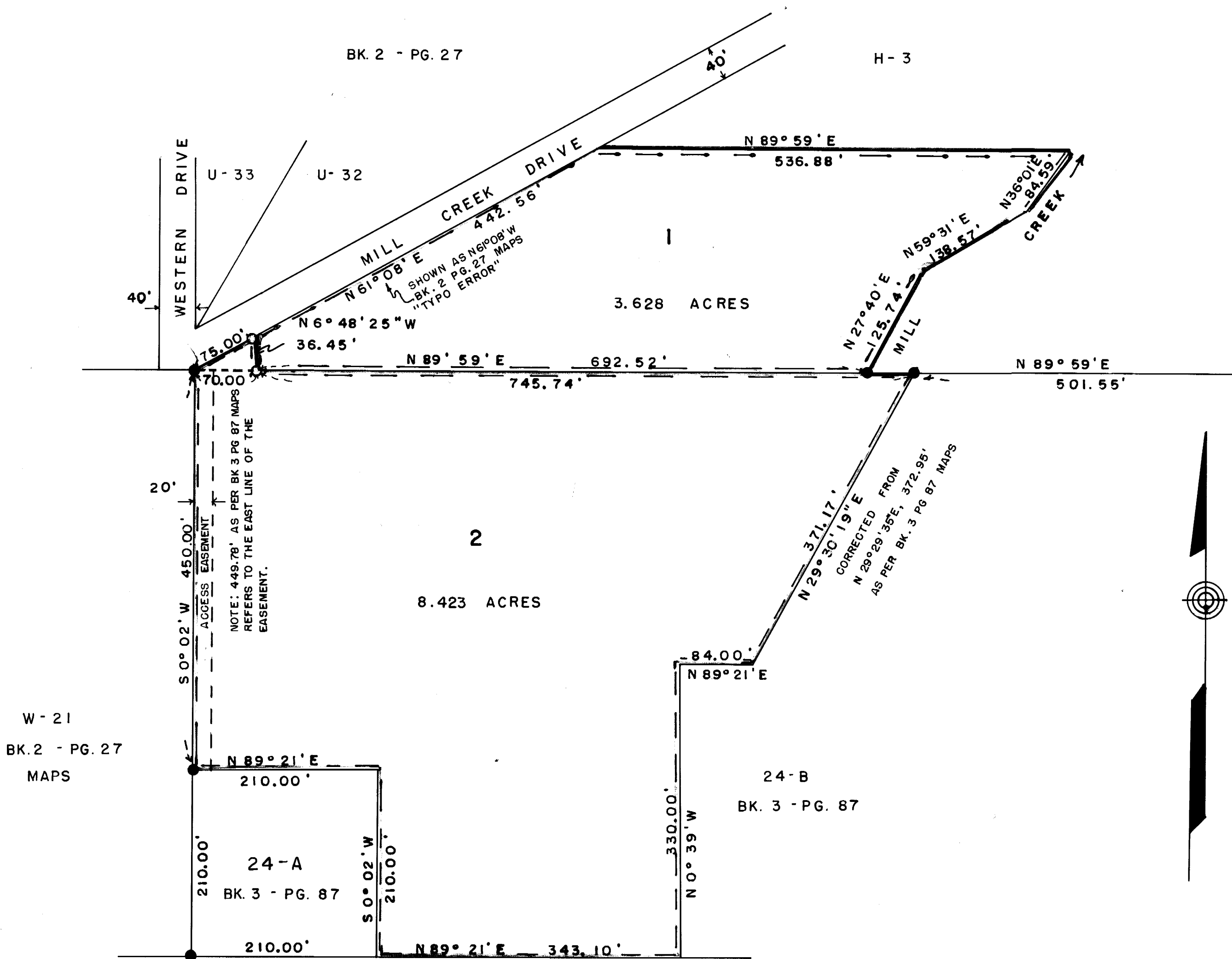
SURVEYOR'S CERTIFICATE

THIS MAP CORRECTLY REPRESENTS A SURVEY MADE BY ME OR UNDER MY DIRECTION IN CONFORMANCE WITH THE REQUIREMENTS OF THE SUBDIVISION MAP ACT AT THE REQUEST OF GEORGE LINSKOTT ON FEBRUARY 18, 1974; I HEREBY CERTIFY THAT IT CONFORMS TO THE APPROVED TENTATIVE MAP AND THE CONDITIONS OF APPROVAL THEREOF, THAT ALL CONDITIONS OF APPLICABLE STATE LAW AND LOCAL ORDINANCES HAVE BEEN COMPLIED WITH.

*Walter G. Reid*  
WALTER G. REID R.C.E. 7522  
VIRGINIA CITY, NEVADA

BASIS OF BEARING

THE BEARING OF N 89° 59' E FOR THE NORTH LINE OF LOT 24-C, MILL CREEK RANCH SUBDIVISION IS THE BASIS OF BEARINGS FOR THIS SURVEY.



LEGEND:

- = CORNERS FOUND 1/2 REBAR
- = CORNERS SET 1/2" REBAR, TAGGED R.C.E. 7522
- ┌ = EXISTING ORIGINAL CORNERS

No. 4700

RECORDER'S CERTIFICATE

FILED THIS 29<sup>th</sup> DAY OF May, 1974, AT 3:00 P.M., IN BOOK 1 OF Parcel Maps ON PAGE 46 AT THE REQUEST OF George Linscott.

*Ann M. Webb*  
COUNTY RECORDER

*File - Vol. 1, Pg. 46*