

Stanislaus County California
Swamp & Overflowed Lands
Survey 1867

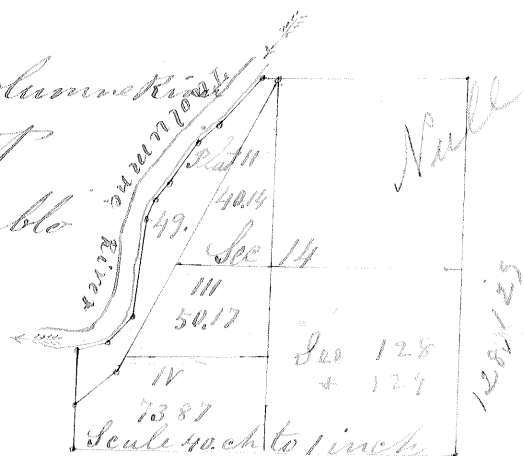
The continuation of fractions

(2) two, (3) three & (4) four in

Section 14, to the left bank of the Tuolumne River
Township 4, South Range 8 East
Base Base and Meridian of Mount Diablo

Containing 49 acres

Surveyed January 6th 1858



For

Charles Frink & Walter G. Willett

Beginning at Meander point on line between
Sec 14 & 15 ^{the} following the U. S. Meander ^{line} ~~line~~
N 47° E 10.37 ch N 26° E 71 ch to M. P. on the North line
of Sec 14 thence West 2.61 ch to the left bank of
the Tuolumne River Meander down Stream
run S 41° W 38.2 ch S 45° W 15.5 ch S 34° W 12 ch
S 32° W 4 ch S 57° W 21.35 ch S 43° W 7.16 ch S 47° W 6.17 ch
South 11 ch to the place of beginning

Run by the true Meridian

Magnetic Variation 15° 45' East

Surveyed in accordance with the act
of the Legislature concerning Swamp
and Overflowed Lands approved

April 28th 1855 and the instructions of the
Surveyor General

Silas Wilcox
County Surveyor