

# CORNER RECORD

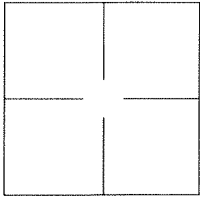
Agency Index BK 139 Pg 27

Document Number CR 14550

City of UNINCORPORATED AREA

County of ALAMEDA, California

Brief Legal Description ALAMEDA COUNTY MONUMENT DQ73H4



## CORNER TYPE

Government Corner ☐ Control ☐  
Meander ☐ Property ☐  
Rancho ☐ Other ☒

Date of Survey 2020-07-21

## COORDINATES (Optional)

N. \_\_\_\_\_ E. \_\_\_\_\_

Elevation \_\_\_\_\_

Units Metric ☐ U.S. Survey Foot ☐

Horizontal Datum \_\_\_\_\_

Zone \_\_\_\_\_ Epoch Date \_\_\_\_\_

Vertical Datum: \_\_\_\_\_

☐ Complies with Public Resources Code §§8801-8819

☐ Complies with Public Resources Code §§8890-8902

PLS Act Ref.: ☐ 8765(d) ☒ 8771 ☐ 8773

Other: \_\_\_\_\_

Corner/  
Monument: ☒ Left as found ☐ Established ☐ Rebuilt ☒ Pre-Construction  
☐ Found and tagged ☐ Reestablished ☒ Referenced ☐ Post-Construction

Narrative of corner identified and monument as found and set or reset:

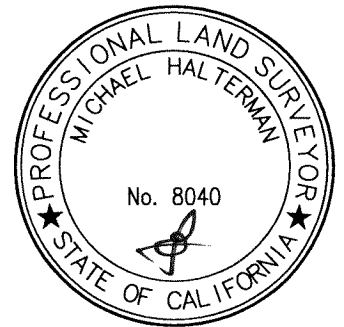
☒ See sheet #2 for description(s):

ALAMEDA COUNTY MONUMENT DQ73H4

## SURVEYOR'S STATEMENT

This Corner Record was prepared by me or under my direction in conformance with  
the Professional Land Surveyor's Act on 23 July, 2021.

Signed [Signature] P.L.S. or R.C.E. No.: 8040



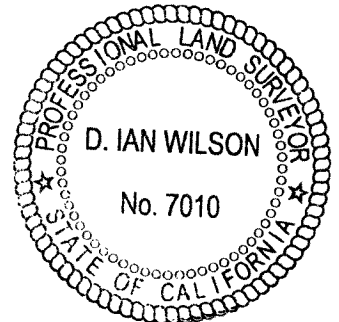
## COUNTY SURVEYOR'S STATEMENT

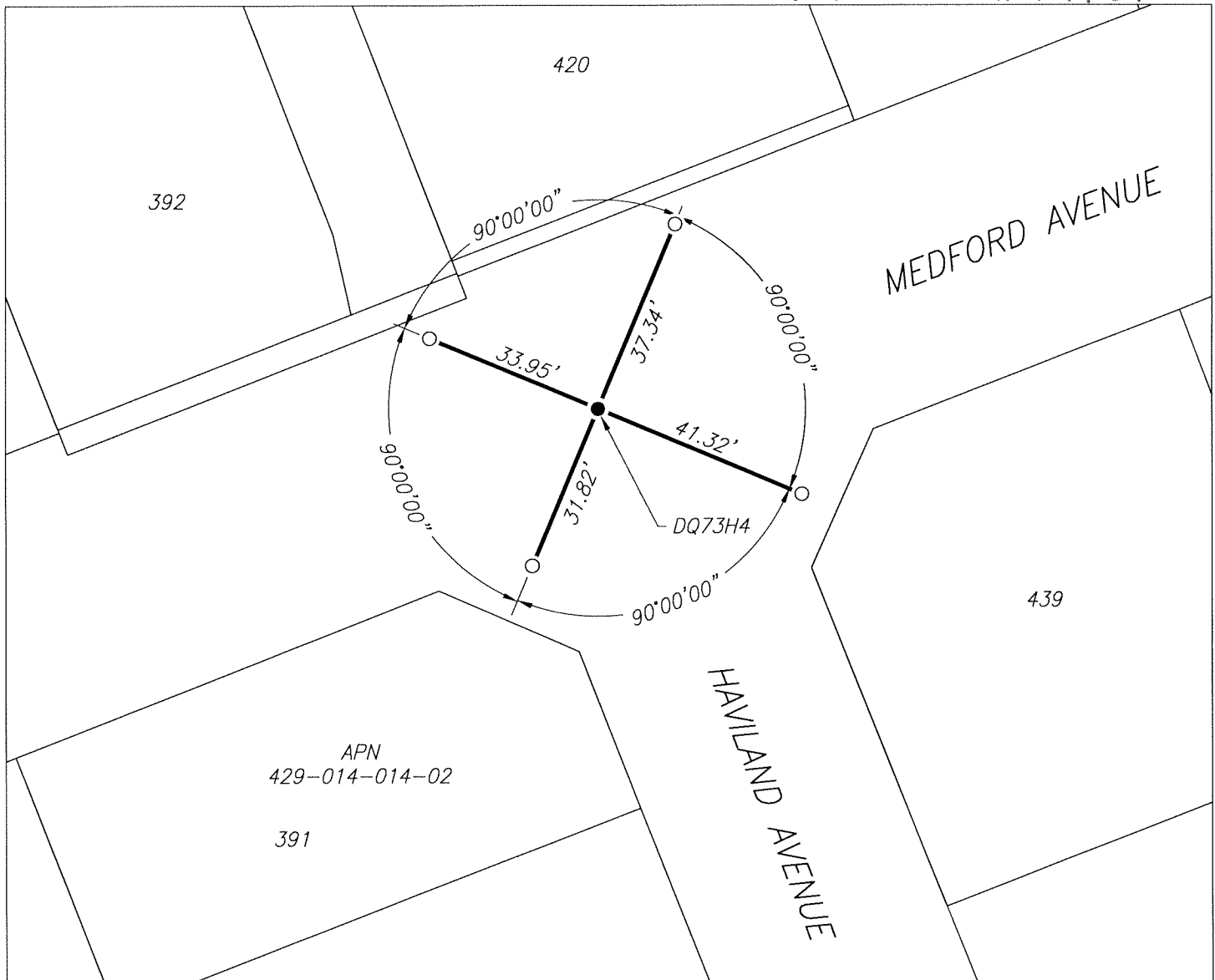
This Corner Record was received \_\_\_\_\_, \_\_\_\_\_ and examined  
and filed AUG 14 2021.

Signed D. Ian Wilson P.L.S. or R.C.E. No.: 7010

Title ALAMEDA COUNTY SURVEYOR

County Surveyor's Comment





## LEGEND

- FOUND 1/8" PIN IN CONCRETE, IN MONUMENT WELL, PER (A)
- SET CUT CROSS IN CONCRETE
- 439 REFERENCE STREET ADDRESS
- APN ASSESSORS PARCEL NUMBER

## REFERENCES

- (A) CORNER RECORD 9625 FILED FOR RECORD ON MARCH 9, 2017, IN BOOK 93 OF CORNER RECORDS, AT PAGE 82, ALAMEDA COUNTY RECORDS

SCALE  1" = 30'