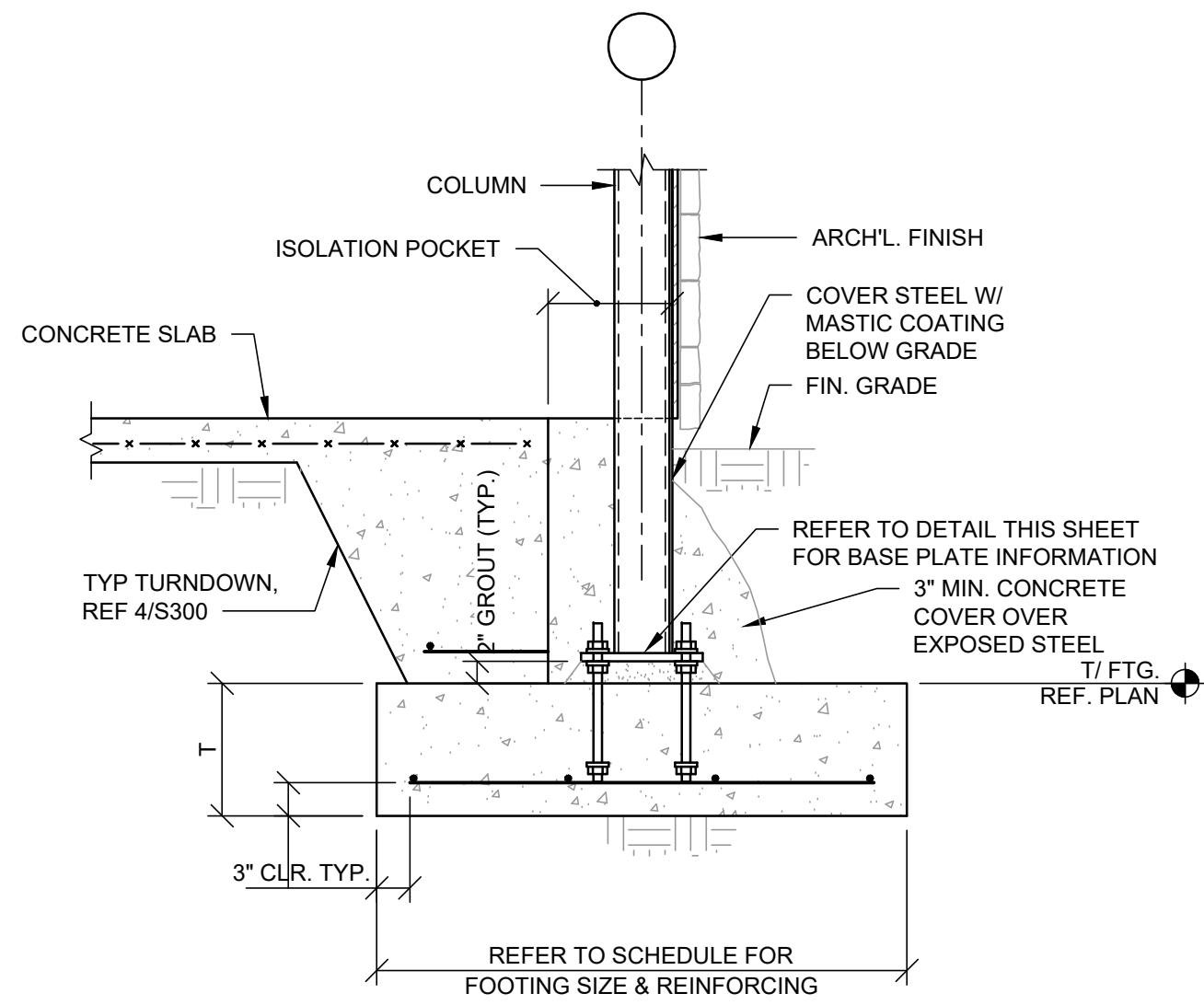


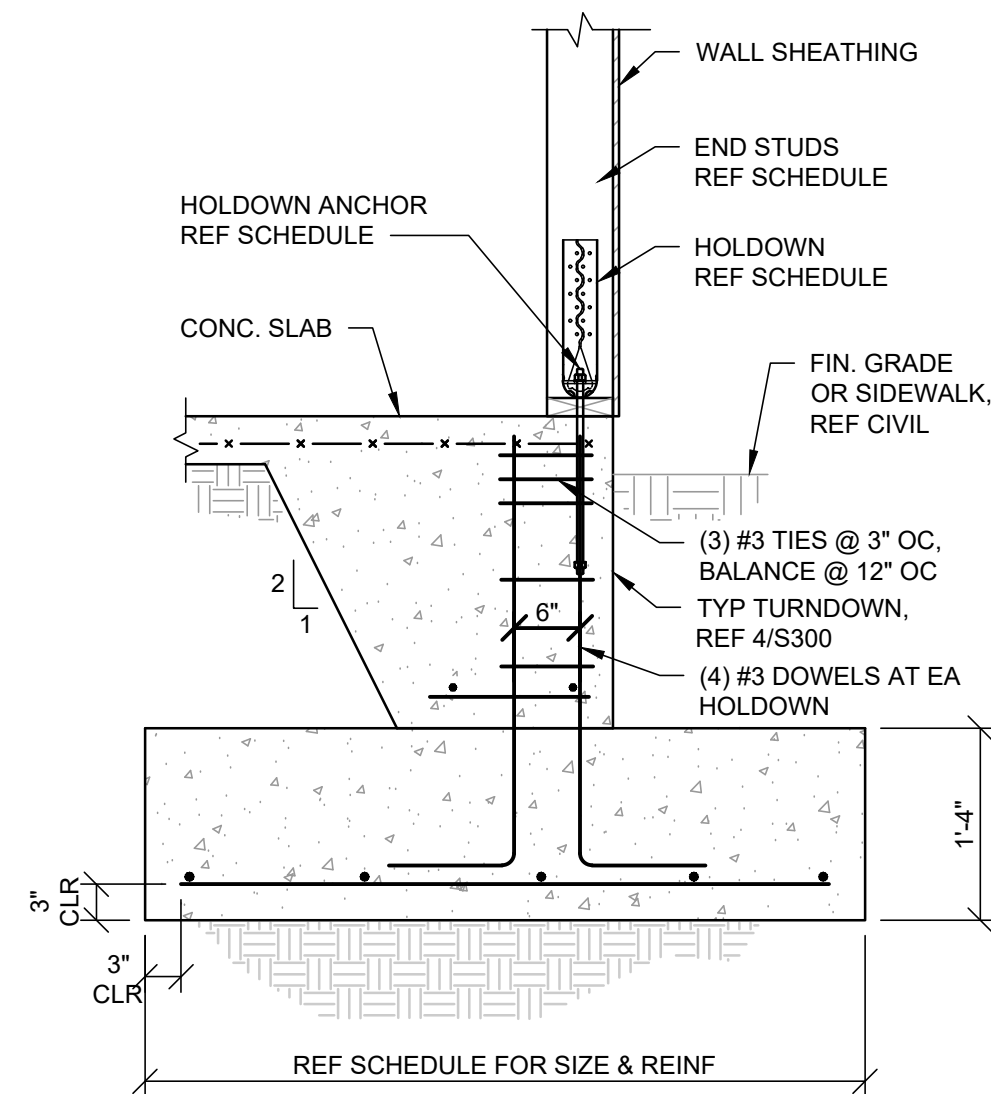
1
S300 3/4" = 1'-0"

INTERIOR COLUMN SECTION



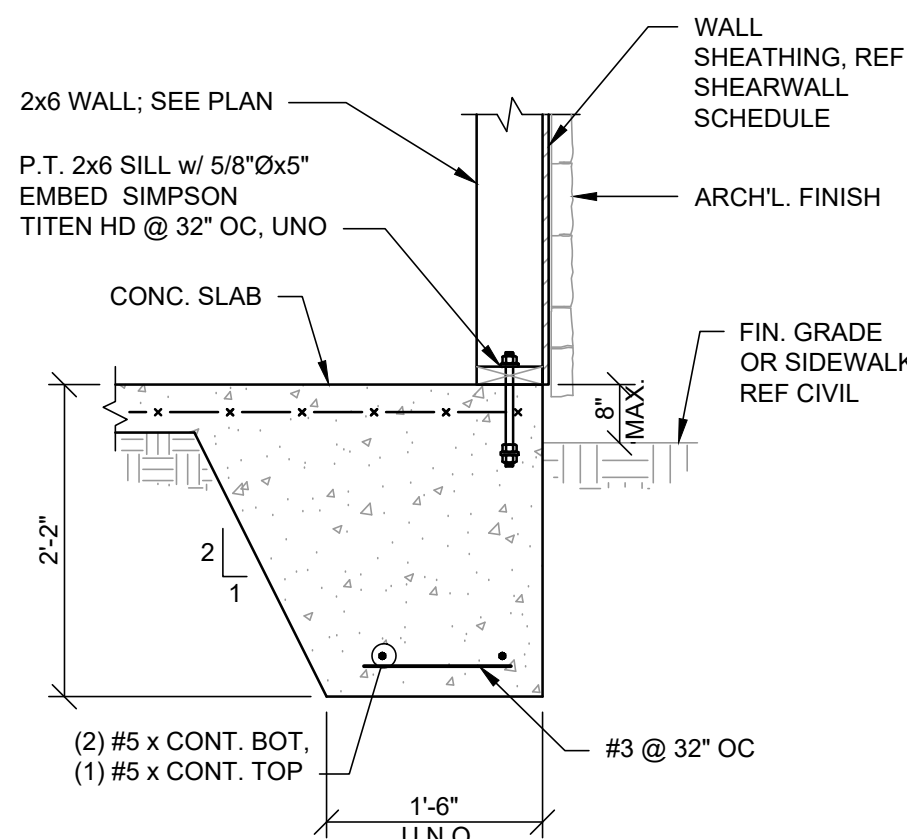
2
S300 3/4" = 1'-0"

TYPICAL EXTERIOR COLUMN



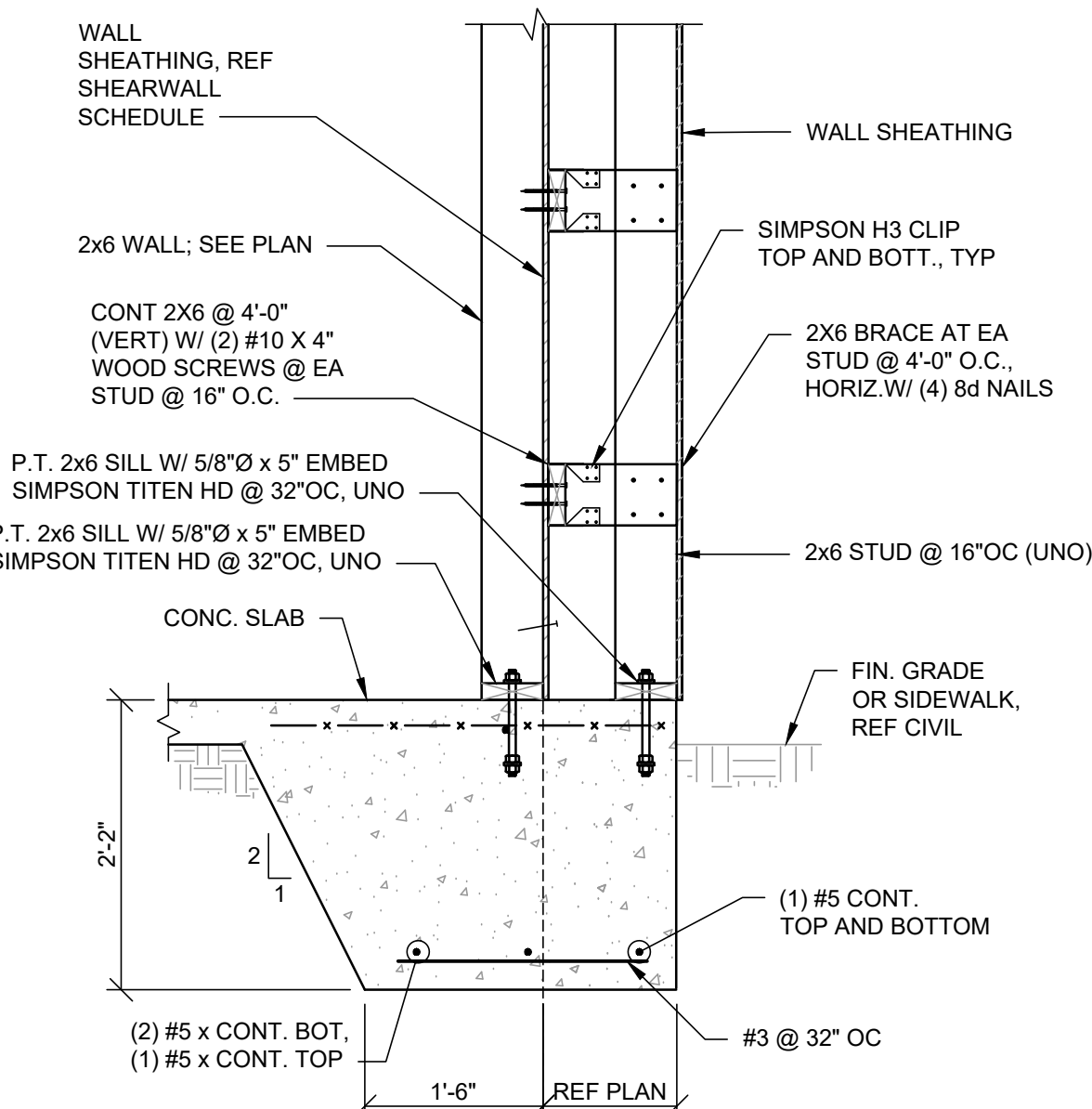
3
S300 3/4" = 1'-0"

SECTION



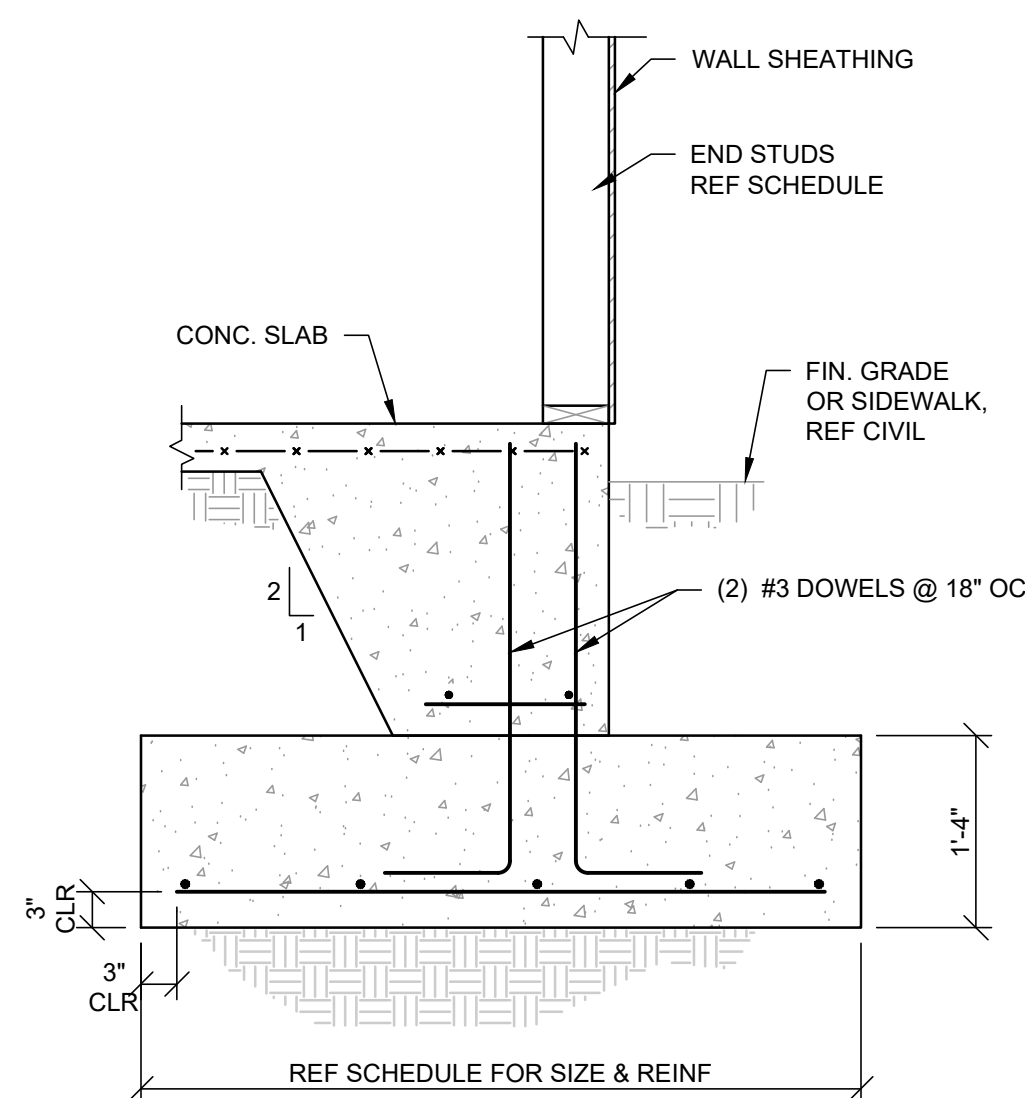
4
S300 3/4" = 1'-0"

SECTION



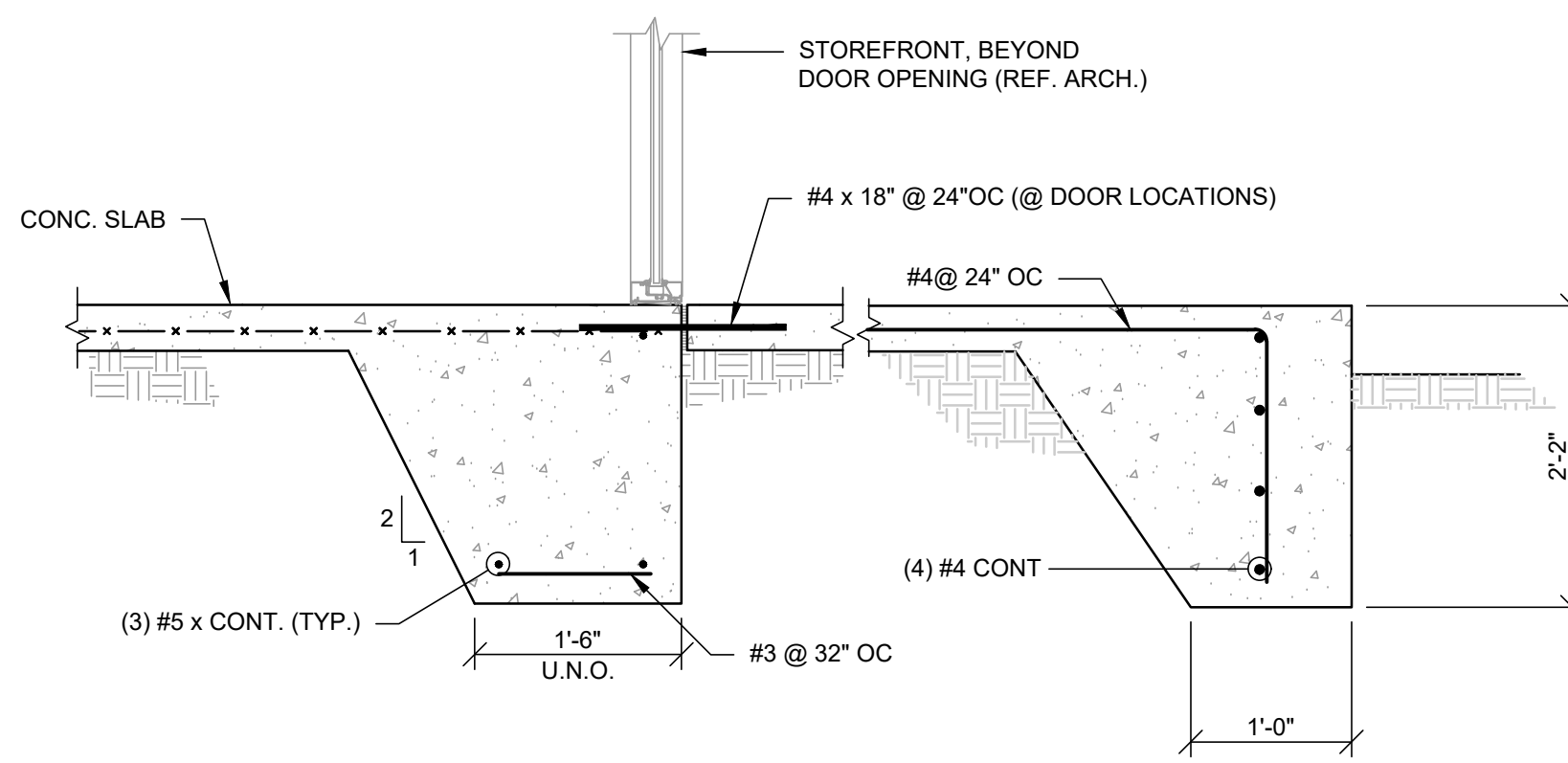
5
S300 3/4" = 1'-0"

SECTION



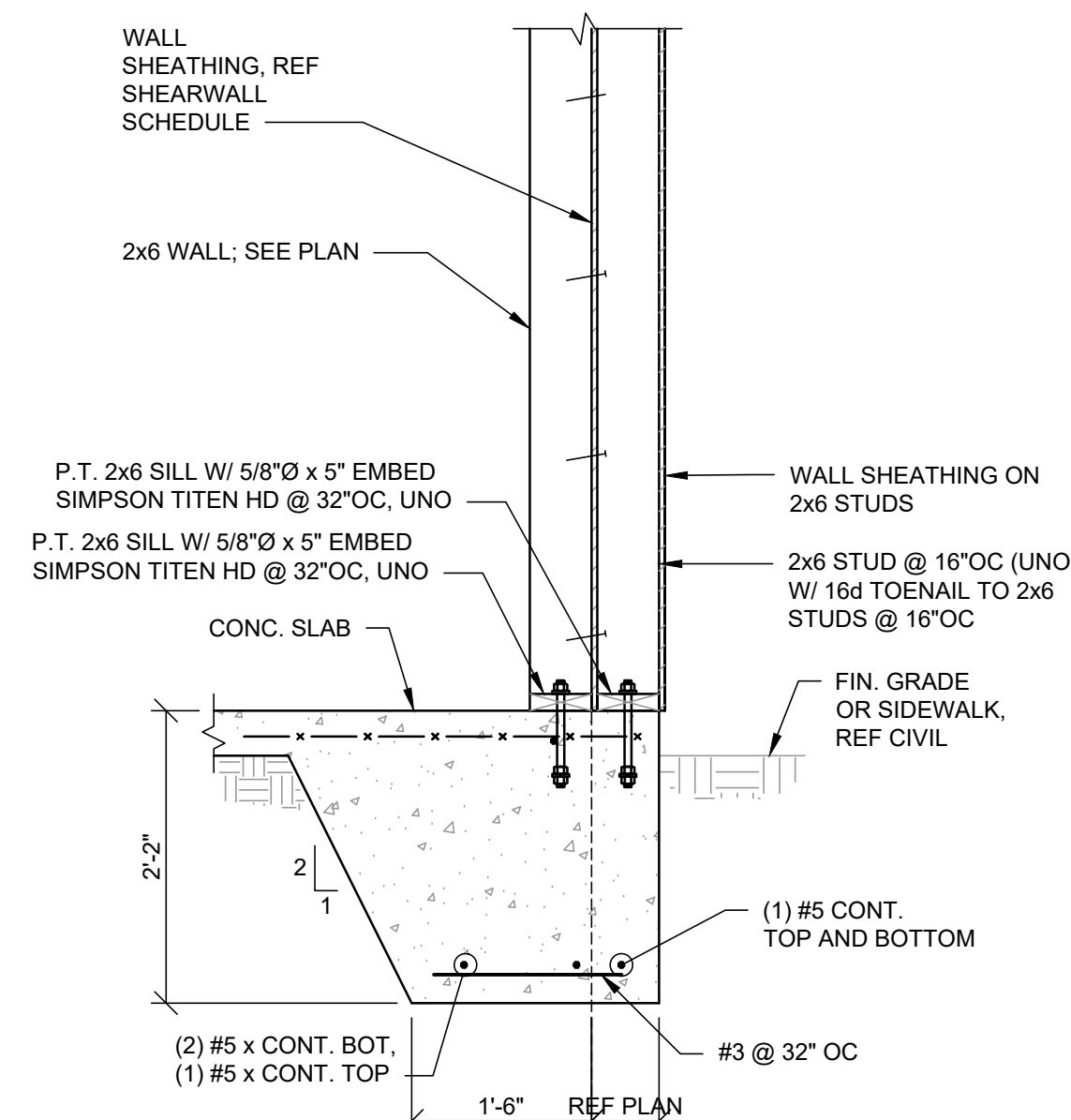
6
S300 3/4" = 1'-0"

SECTION



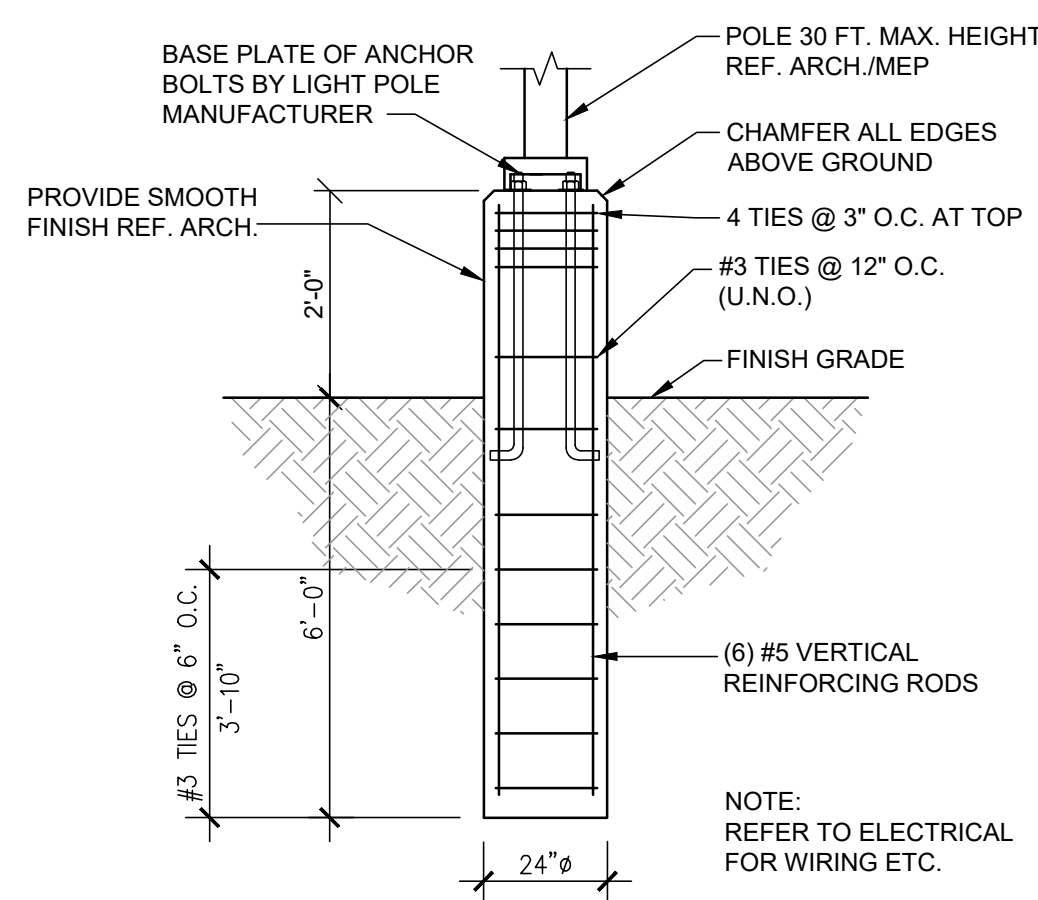
7
S300 3/4" = 1'-0"

TYPICAL TURNDOWN AT STOREFRONT OR DOOR



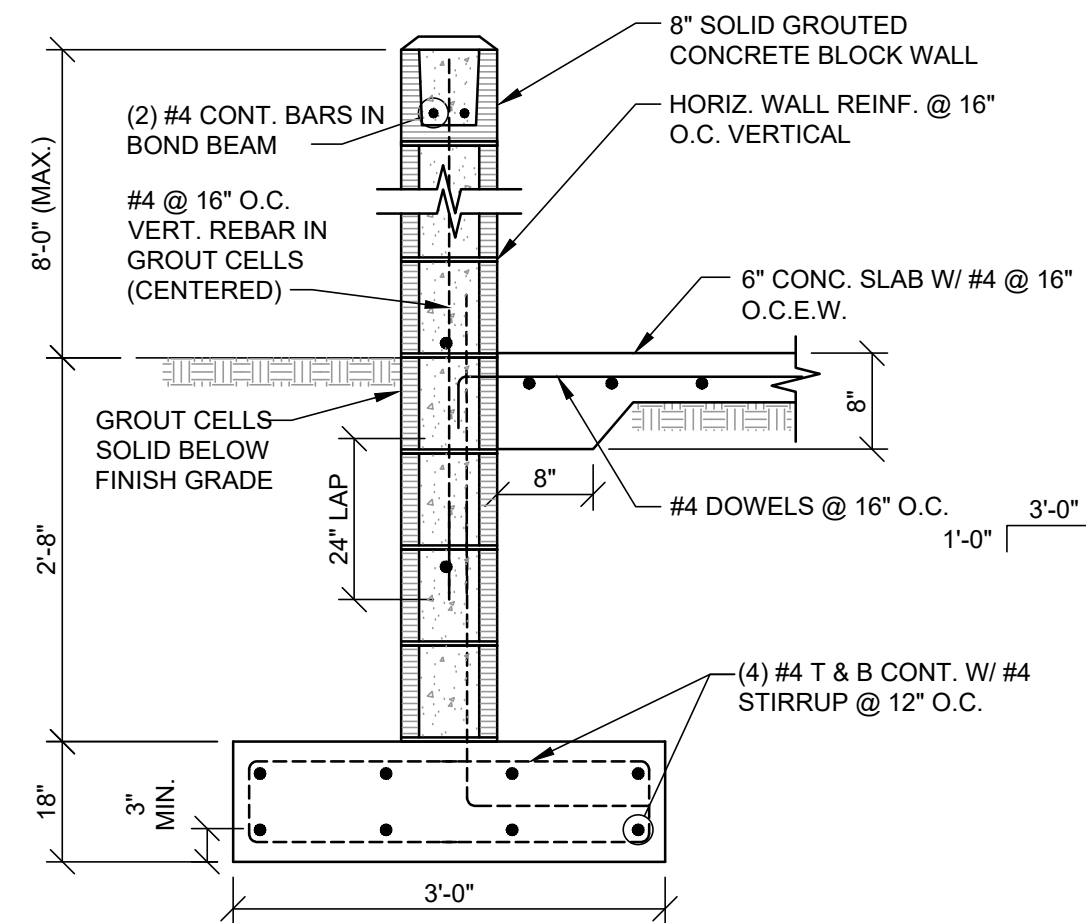
8
S300 3/4" = 1'-0"

SECTION



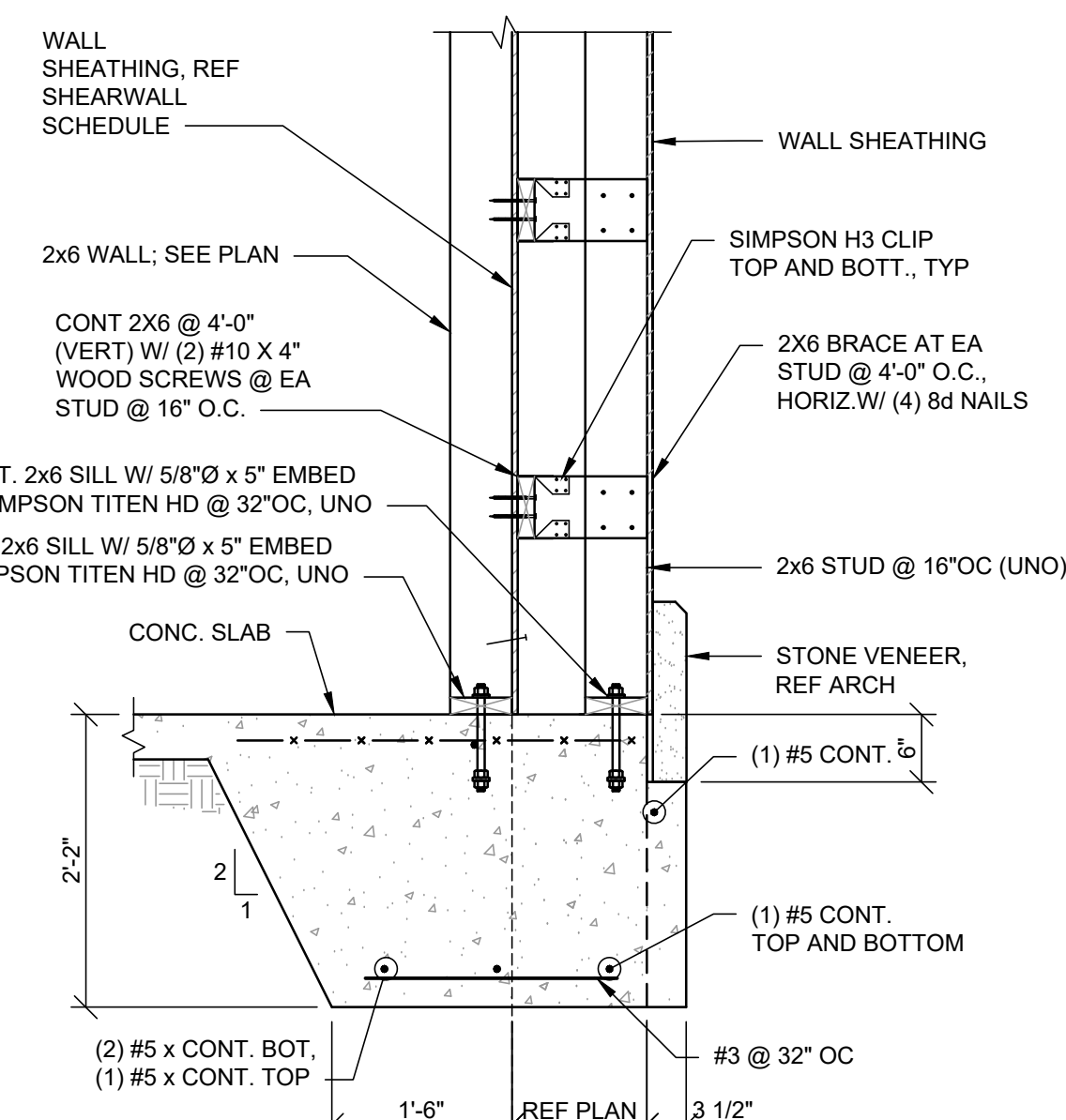
9
S300 3/4" = 1'-0"

TYP LIGHT POLE SECTION



10
S300 3/4" = 1'-0"

TRASH ENCLOSURE WALL



11
S300 3/4" = 1'-0"

SECTION

BRITT PETERS AND ASSOCIATES INC.
consulting engineers
101 Falls Park Drive
Suite 601
Greenville, SC 29601
(864) 271-8869
(864) 233-5140 Fax
www.brittpeters.com
BPA Job No. 210395

THIS DRAWING has been prepared by the Architect, or prepared under his direct supervision as an instrument of service and is intended for use only on this project. All Drawings, Specifications, ideas and designs, including the overall layout, form, arrangement, and composition of spaces and elements portrayed, constitute the original, unpublished work of the Architect. Any reproduction, use, or disclosure of the information contained herein without the written consent of the Architect is strictly prohibited.

© 2021 H.C. KLOVER ARCHITECT

THE ARCHITECT DISCLAIMS responsibility for the existing building structure, site conditions, existing construction elements, or any documents, drawings or other instruments, past or for any part of this Project which do not bear the Architect's seal. The Architect's services are undertaken only in the interest of the Project Owner. No obligation is assumed by the Architect for the benefit of any other entity.

RELATED DOCUMENTS: This Drawing is a single component of an integrated set of Construction Documents. General and Supplementary Conditions of the Contract, General Requirements, Specifications and other drawings may affect the Work described. Failure to review and incorporate the design intent of the whole of the Construction Documents does not relieve the Contractor from providing a complete Project.

CANNOT WITH all laws, codes, ordinances and regulations with authorities having jurisdiction and with requirements of the Landlord, if applicable, to not start Work until all permits and required approvals are obtained.

VERIFY ALL CONDITIONS and dimensions prior to construction. Commencement of work constitutes verification and acceptance of all existing conditions. Application of a material or equipment item to Work installed by others constitutes acceptance of that Work, and assumption of responsibility for satisfactory installation.

DIMENSIONS SHOWN are to finish face of a material unless otherwise indicated. INCLUDE & RESERVE dimensions - DO NOT SCALE drawings unless otherwise directed.

project title

CFT RETAIL BUILDING
2901 S. CHURCH STREET
MURFREESBORO, TN 37127

project number
20045.003
drawing issuance
PERMIT/BID SET 6.1.2021
drawing revisions
No. Description Date:

professional seal
WILLIAM B. UNDERWOOD
REGISTERED PROFESSIONAL ENGINEER
STATE OF TENNESSEE
No. 119879
6/21/2021
drawing title
FOUNDATION SECTIONS

drawing number
S300