

# TRACT 6948

## CALIFORNIA ROSE CREST

BEING A RESUBDIVISION OF PARCELS E AND F  
OF TRACT 6901, RECORDED IN BOOK 233,  
PAGE 1 AND THAT CERTAIN PARCEL OF  
LAND DESCRIBED IN SERIES NO. 97-143959.

UNION CITY ALAMEDA COUNTY CALIFORNIA  
CARLSON, BARBEE & GIBSON, INC.

SAN RAMON CALIFORNIA

SCALE: 1"=40'

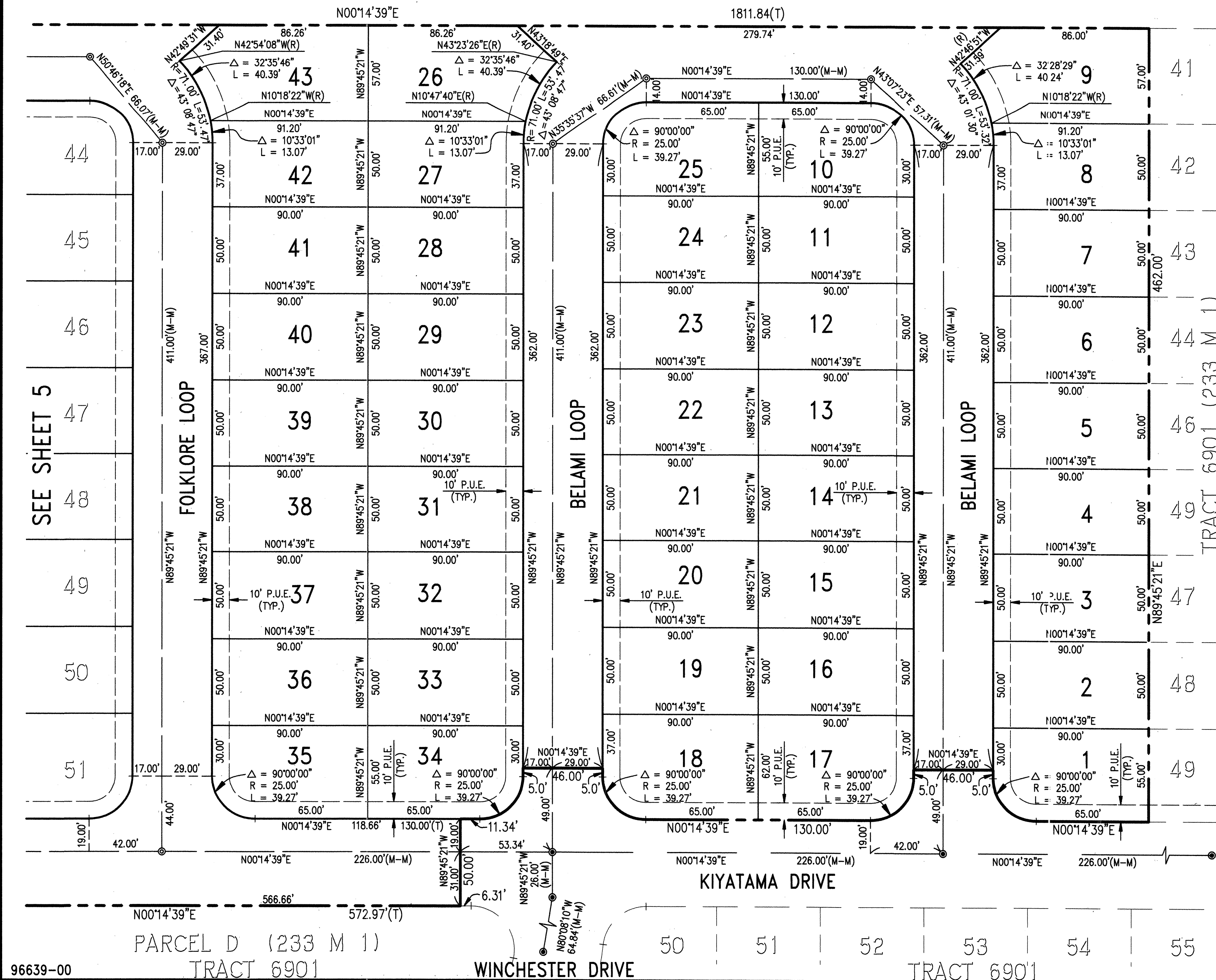
DATE: AUGUST, 1997

### LEGEND

---	SUBDIVISION BOUNDARY
---	LOT LINE
---	EASEMENT LINE
---	MONUMENT LINE
(T)	TOTAL
(R)	RADIAL
(M-M)	MONUMENT TO MONUMENT
(M-PL)	MONUMENT TO PROPERTY LINE
⊙	SET STANDARD STREET MONUMENT STAMPED L.S. 7176
⊙	STREET MONUMENT TO BE SET PER TRACT 6109 UNLESS OTHERWISE NOTED
●	FOUND MONUMENT AS NOTED
■	FOUND FENCE CORNER POST
P.U.E.	PUBLIC UTILITY EASEMENT
S.D.E.	STORM DRAIN EASEMENT
SFNF	SEARCHED FOR, NOTHING FOUND

### BASIS OF BEARINGS:

THE BASIS OF BEARING FOR THIS MAP IS DETERMINED BY  
FOUND MONUMENTS SHOWN HEREON; THE BEARING BEING  
NORTH 70°46'00" WEST PER PARCEL MAP 3365, FILED IN  
BOOK 128 OF MAPS AT PAGE 14, ALAMEDA COUNTY RECORDS.



Tract Map 6948 Map Bk 237 Pg 40