



Chick-fil-A
5200 Buffington Road
Atlanta, Georgia 30349-
2998

INTERPLAN

ARCHITECTURE
ENGINEERING
INTERIOR DESIGN
PROJECT MANAGEMENT

604 COURTLAND STREET
SUITE 100
ORLANDO, FLORIDA 32804
PH 407.645.5008
FX 407.629.9124

SEAL:
INTERPLAN ARCHITECTURE
INTERPLAN ENGINEERING
INTERPLAN INTERIOR DESIGN
INTERPLAN PROJECT MANAGEMENT

CHICK-FIL-A
Cherokee Place, FSR
115 Cherokee Place, Cartersville, GA
30121

FSR# 00534

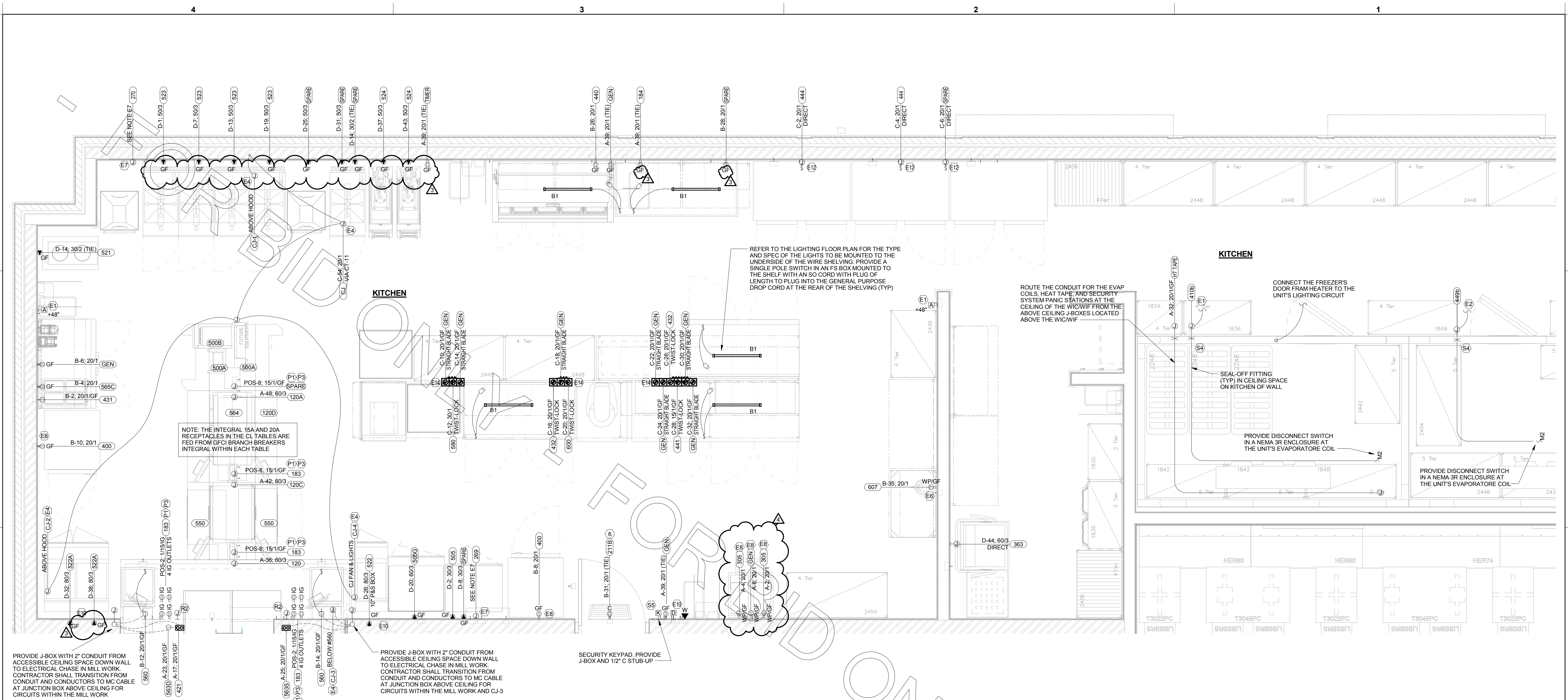
REVISION	SCHEDULE	NO.	DATE	DESCRIPTION
3	01/12/18			CITY COMMENTS
4	01/31/18			COORDINATION REVISIONS

CONSULTANT PROJECT # 2017.0149
PRINTED FOR Bld
DATE 11/20/17
DRAWN BY Designer

Information contained on this drawing and in all digital files
produced for above named project may not be reproduced or
any manner without express written or verbal consent from
authorized project representatives.

SHEET
ENLARGED KITCHEN
POWER PLAN - LRG
SHEET NUMBER

E-301L



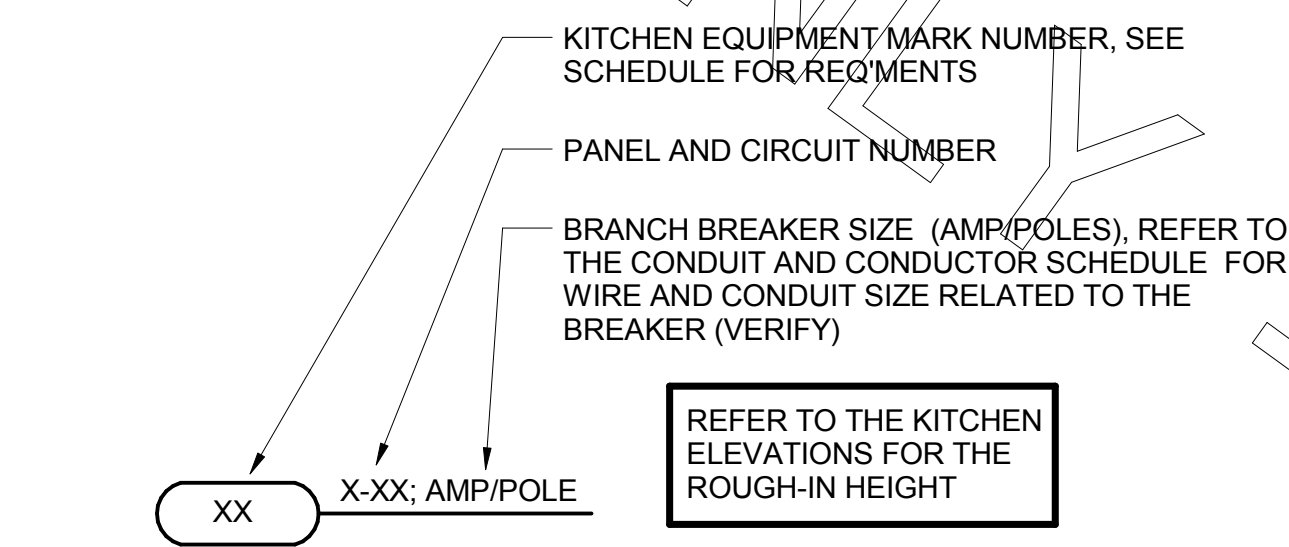
C1 ENLARGED KITCHEN POWER PLAN - LRG
1/2" = 1'-0"

REFER TO
SHEET E-003
FOR KEYNOTES

NOTE FOR GF TYPE RECEPTACLES:
ALL SINGLE-PHASE RECEPTACLES RATED 150VOLTS TO GROUND
OR LESS AND THREE-PHASE RECEPTACLES RATED 150VOLTS TO
GROUND OR LESS, 100 AMPERS OR LESS INSTALLED IN THE
FOLLOWING LOCATIONS SHALL HAVE GROUND-FAULT CIRCUIT-
INTERRUPTER PROTECTION FOR PERSONNEL. PER NEC ART 210
(B)(1)-(8)

NOTE FOR POS GF IN KITCHEN:
THE CONTRACTOR SHALL PROVIDE GROUND FAULT PROTECTION
FOR ALL 120 VOLT, 15 AND 20 AMP ISOLATED GROUND RECEPTACLE
OUTLET BRANCH CIRCUITS IN THE KITCHEN/FOOD PREPARATION
AREAS. GROUND FAULT PROTECTION SHALL BE PROVIDED AT THE
BREAKER VIA A GROUND FAULT TYPE BRANCH BREAKER. (GFCI
TYPE ISOLATED GRD RECEPTACLES ARE NOT AVAILABLE.)

NOTE:
RECEPTACLES FOR THE POS EQUIPMENT SHALL BE THE ONLY
ITEMS THAT CONNECT TO PANEL-POS. THERE SHALL BE NO
OTHER LOADS CONNECTED TO THIS ISOLATED GROUND PANEL
AND, IF SO, SHALL BE REMOVED AND RECONNECTED TO
ANOTHER PANELBOARD AT THE EXPENSE OF THE CONTRACTOR.



A1 KITCHEN EQUIPMENT NOMENCLATURE
NO SCALE

3/12/2018 4:38:00 PM