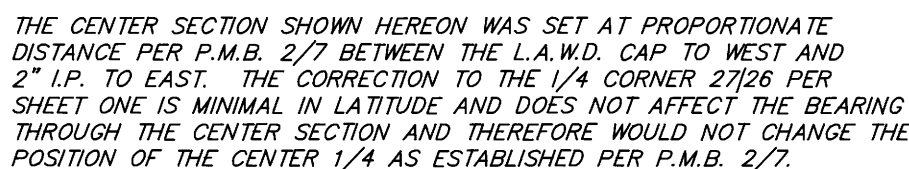


BEING A SURVEY OF THE NE. 1/4 OF THE NW. 1/4 OF THE SE. 1/4, THE E. 1/2 OF THE NW. 1/4 OF THE NW. 1/4 OF THE SE. 1/4, THE NE. 1/4 OF THE SW. 1/4 OF THE NW. 1/4 OF THE SE. 1/4, AND THE N. 1/2 OF THE SE. 1/4 OF THE NW. 1/4 OF THE SE. 1/4; SECTION 27 AND A PORTION OF THE S. 1/2 OF SECTION 26, TOWNSHIP 4 SOUTH, RANGE 29 EAST, M.D.B. & M., COUNTY OF MONO, STATE OF CALIFORNIA.

NOTE:

- AS SHOWN AND NOTED ON SHEET 1, THE S.1/16 27/26 SET BY L.A.W.D. WAS NOT SET PER ACCEPTED METHODS. MANY DEEDS IN THE AREA STARTED AT THAT POINT AND THEN RETROD A WELL MONUMENTED LINE EASTERLY WITH THE INTENTION OF BEING ON THE N. LINE OF THE S.1/2 S.W.1/4. THE SECTIONAL RESURVEY PER P.M.B. 2/7 SHOWED THAT THE S.1/16 ON THE CENTER 1/4 LINE SHOULD BE SOUTH OF THE DEED LINE. P.M.B. 3/41 WAS ORIGINALLY MONUMENTED ON LINE WITH THIS 1/16 CORNER TO THE EAST AND THE L.A.W.D. CAP TO THE WEST. THIS SECTIONAL RESURVEY SHOWN ON SHEET 1 SHOWS THAT THE 1/4 27/26 PER L.A.W.D. WAS ALSO INCORRECT. DETAIL "A" HEREON SHOWS THE EFFECT OF THIS CORRECTION TO THE N. LINE OF THE S.1/2 S.W.1/4 ON PARCEL 2, 190/627 O.R. AND PARCELS 1 AND 2 OF P.M.B. 3/41.



BOOK 2 OF RECORD OF SURVEY MAPS AT PAGE 1244