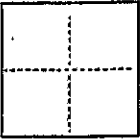


CR 159

COUNTY OF Alameda T. 2 S. R. 3 W. Mt. Diablo MERIDIAN CALIFORNIACORNER TYPE: GOV'T. CORNER ☐ MEANDER ☐ RANCHO ☐ CONTROL ☐ OTHER ☒CORNER IDENTIFICATION — DATE OF VISIT January 21 19 92

Monument "Grant - R R 1957" in the monument line of Grant Avenue as shown on R/S No. 476

CORNER — LEFT AS FOUND ☐ FOUND AND TAGGED ☐ REESTABLISHED OBLITERATED CORNER ☒ REBUILT ☐

PHYSICAL DESCRIPTION OF CORNER FOUND, EVIDENCE AND METHOD USED TO IDENTIFY OR REESTABLISH

Found brass disc stamped "Grant - R R 1957" in monument well, referenced as shown in sketch below. Monument destroyed by pipeline construction.

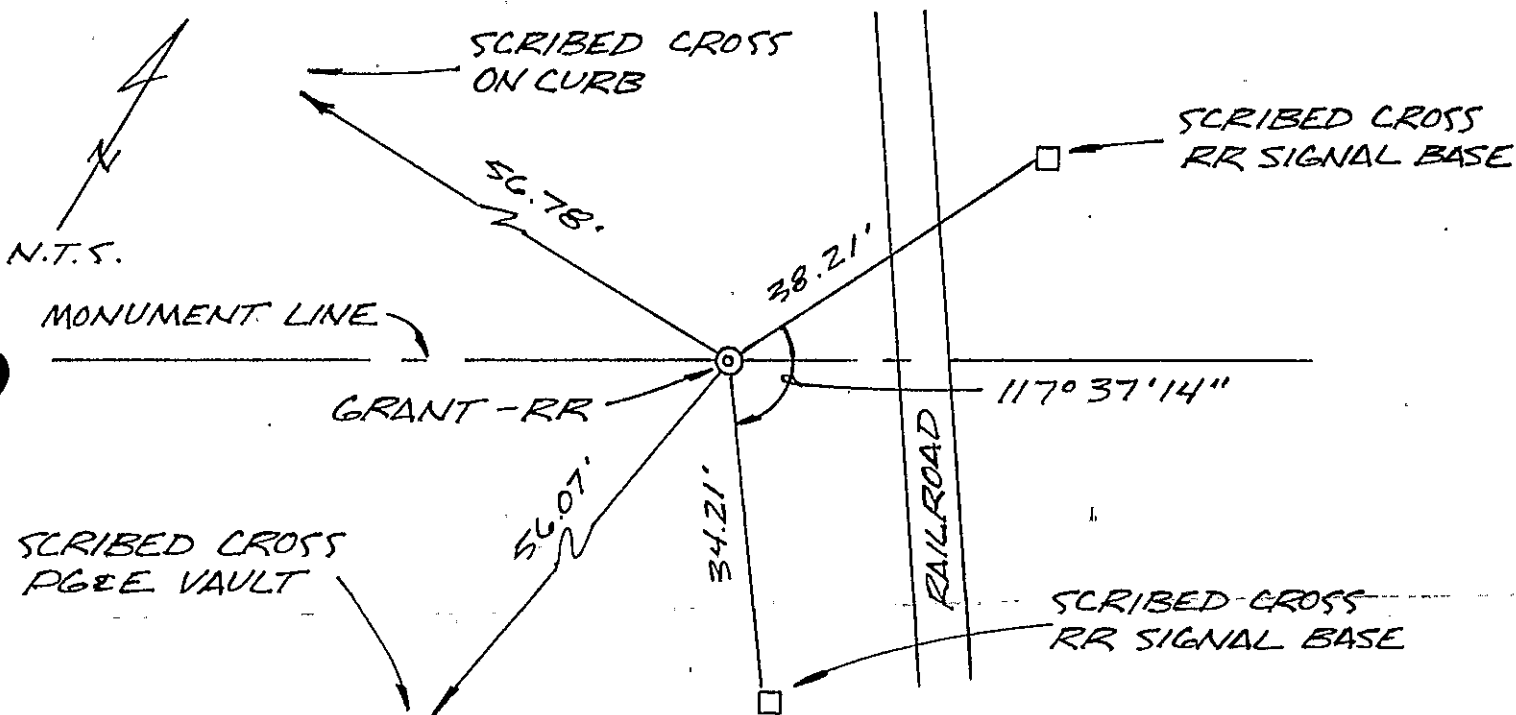
PHYSICAL DESCRIPTION OF MONUMENTS REBUILT OR PERPETUATED

Set brass disc in monument well using previously established reference points. Monument stamped "Grant - R R -1", "1992", "LS 5199".

CALIFORNIA COORDINATE SYSTEM ORDER: FIRST ☐ SECOND ☐ THIRD ☐
STATIONS USED: NGS (USC & GS) ☐ STATE ☐ COUNTY ☐ OTHER ☐ STATION _____ STATION _____
ZONE _____ ELEVATION _____ NORTHINGS (Y) _____ EASTINGS (X) _____

(Fold)

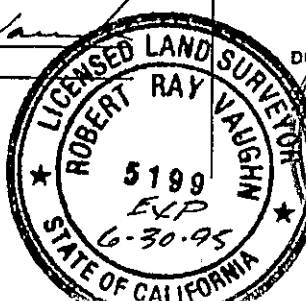
SKETCH: (Include reference tie or witness points, remarks and topo of area)



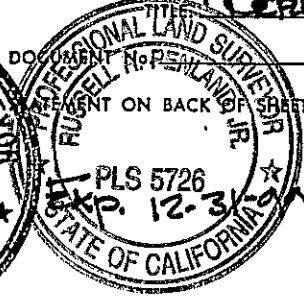
SURVEYOR'S CERTIFICATE

THIS CORNER RECORD WAS PREPARED BY ME OR UNDER MY DIRECTION IN CONFORMANCE WITH THE LAND SURVEYORS ACT ON May 18 19 92SIGNED: Robert Ray VaughnL.S. or R.C.E. No.: L.S. 5199

SEAL



COUNTY SURVEYOR'S CERTIFICATE

THE CORNER RECORD WAS RECEIVED 6-15-92 AND EXAMINED AND FILED 120-20-1995 BY Robert Ray Vaughn COUNTY SURVEYORYES ☐ NO ☒