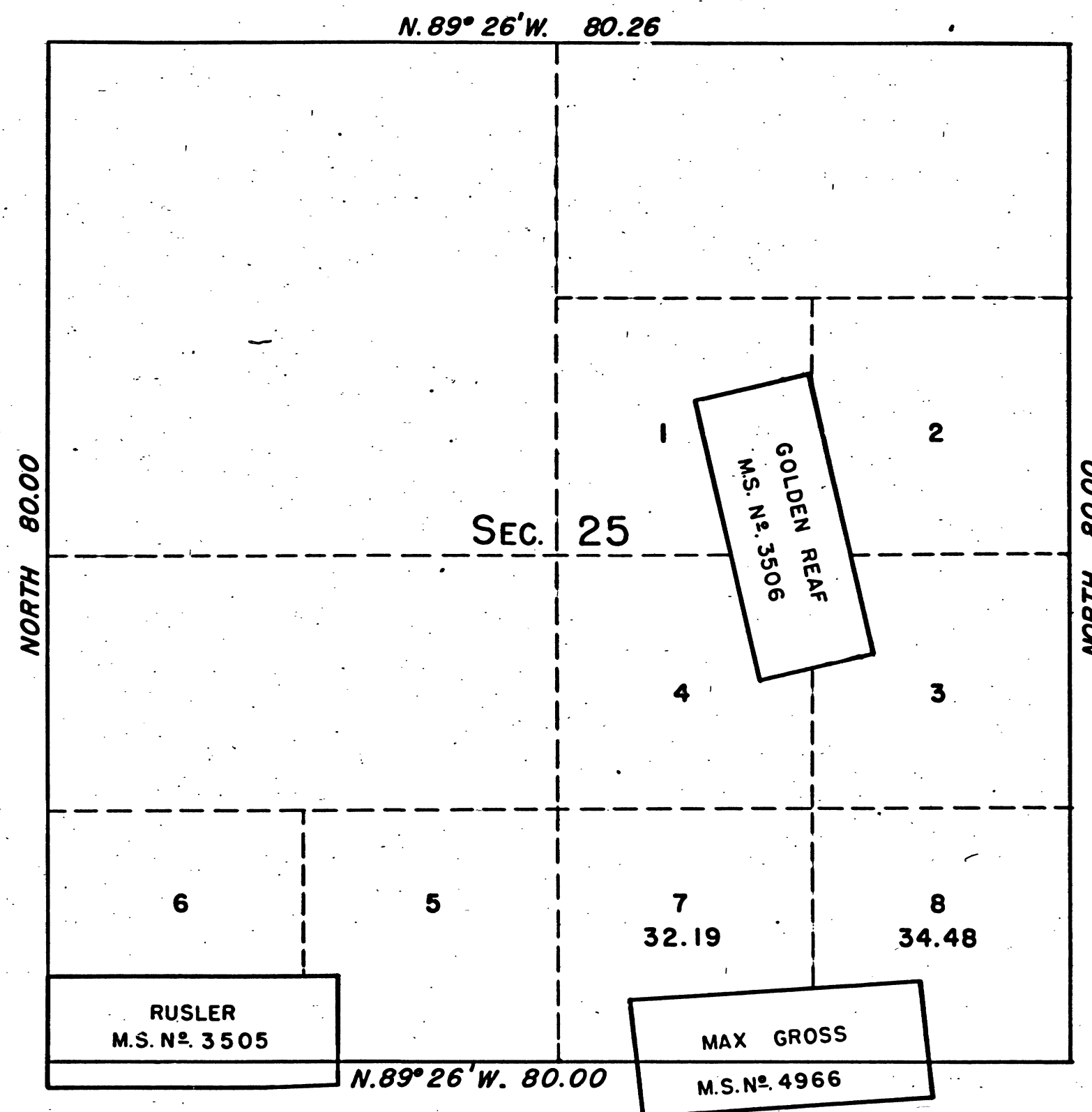


TOWNSHIP N<sup>o</sup> 4 NORTH, RANGE N<sup>o</sup> 13 EAST, MOUNT DIABLO MERIDIAN, CALIFORNIA.  
SUPPLEMENTAL PLAT OF SECTION 25



MEMORANDUM:

THIS PLAT, SHOWING AMENDED LOTTINGS  
CREATED BY THE SEGREGATION OF THE MAX GROSS  
LODE OF MINERAL SURVEY NO. 4966 IN SECTION  
25, T. 4 N., R. 13 E., M.D.M., CALIFORNIA,  
BASED UPON THE PLATS APPROVED AUG. 16, 1871  
AND JUNE 6, 1902, IS PREPARED TO ACCOMMODATE  
ENTRY SACRAMENTO 037362, UNDER AUTHORITY OF  
SECTION 2.14 OF DIRECTOR'S ORDER NO. 427,  
DATED AUGUST 16, 1950.

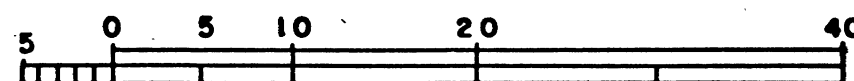
UNITED STATES DEPARTMENT OF THE INTERIOR  
BUREAU OF LAND MANAGEMENT  
WASHINGTON, D.C., OCTOBER 24, 1950

THIS PLAT SHOWING AMENDED LOTTINGS, AND HAVING BEEN CORRECTLY  
PREPARED IN ACCORDANCE WITH THE REGULATIONS, IS HEREBY ACCEPTED.

FOR THE DIRECTOR

*William F. Richards*

CHIEF, BRANCH OF SURVEYS



SCALE IN CHAINS

CHAINS

CHAINS

10 20 40 60 80 120

41 345-A

T4N R13E MDM

BLM 186

7