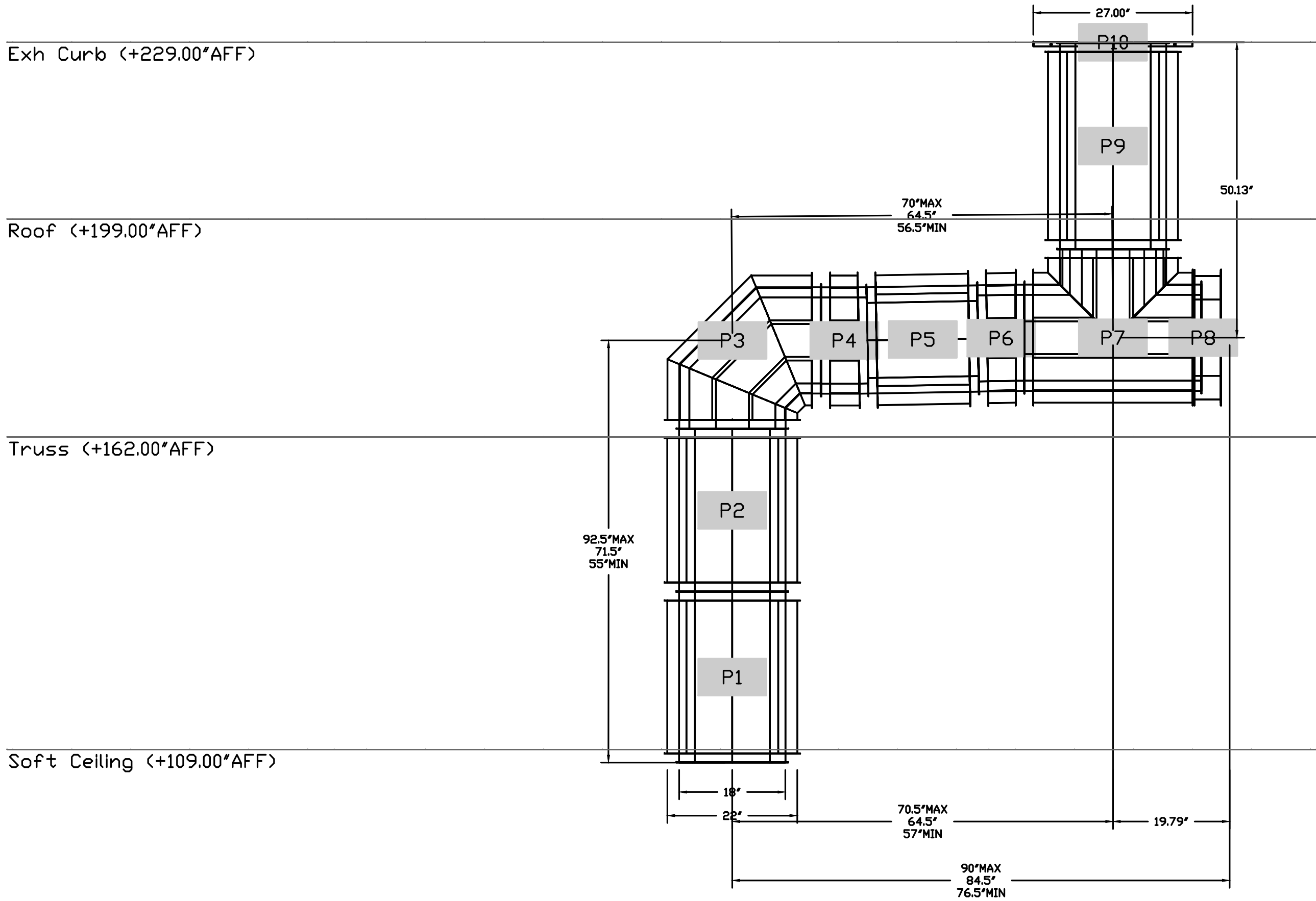


DUCTWORK #1 SIDE VIEW



Exh Curb (+229.00'AFF)

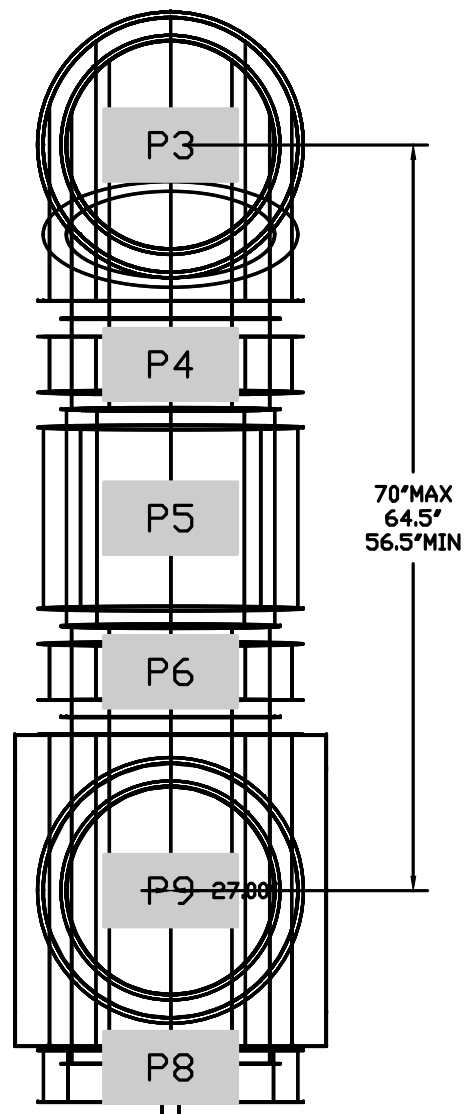
Roof (+199.00'AFF)

Truss (+162.00'AFF)

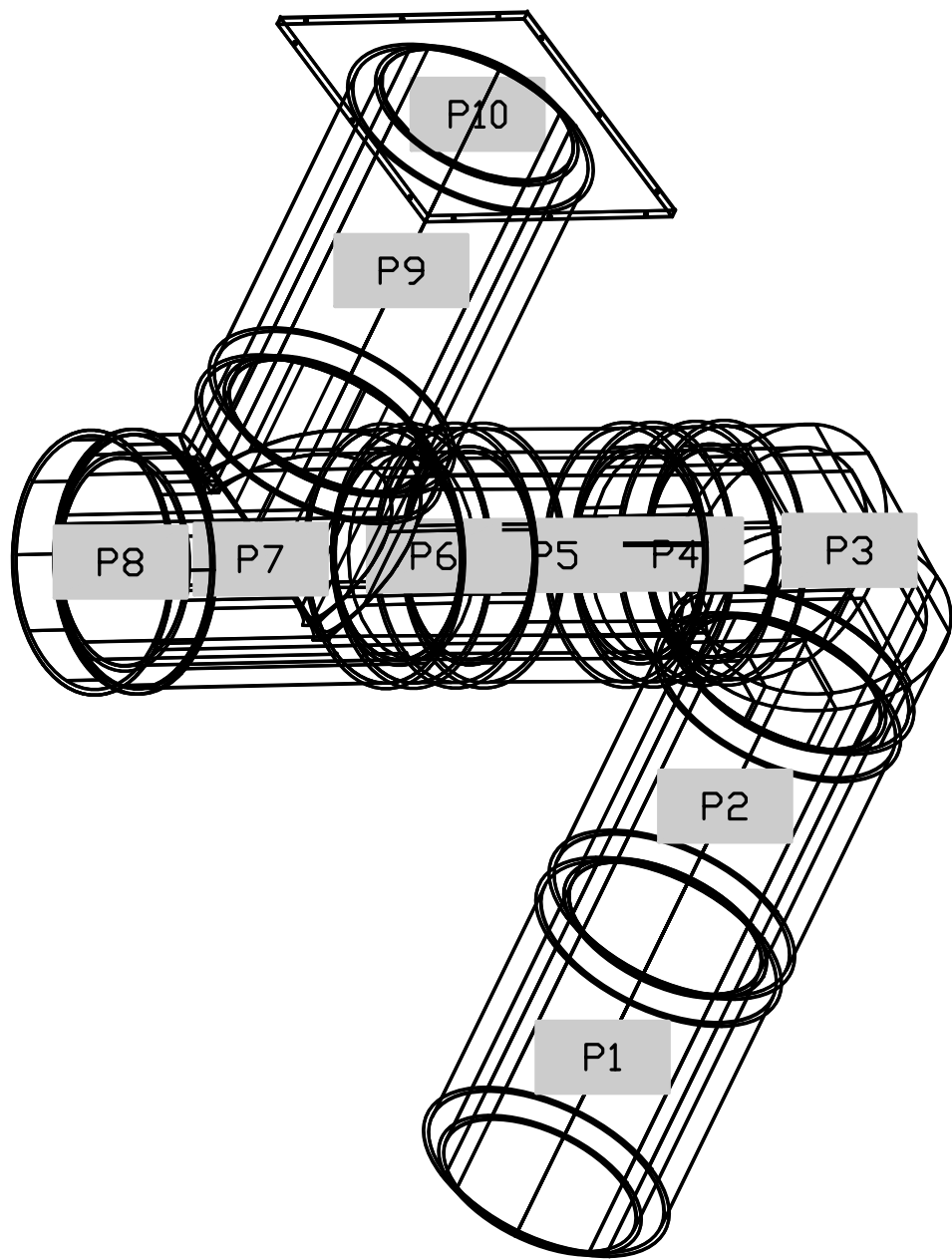
Soft Ceiling (+109.00'AFF)

Floor (+0.00'AFF)

DUCTWORK #1 TOP VIEW



DUCTWORK #1 SE VIEW



PRE-FABRICATED DOUBLE WALL ROUND DUCT IS AVAILABLE AS AN ALTERNATE HVAC CONTRACTOR OR GENERAL CONTRACTOR TO CONTACT REGION 86 @ 714-957-1500 OR REG86@CAPTIVEAIRE.COM FOR DESIGN AND PRICING

REVISIONS	
DESCRIPTION	DATE

Southern California Office
www.captiveaire.com
3002 Dow Ave., Suite 410, Tustin, CA, 92780 PHONE: (714) 957-1500 FAX: (919) 227-5975 EMAIL: reg86@captiveaire.com

Panda Express - Orlando FL (D8016)

DATE: 2/18/2021

DWG.#: 4748325

DRAWN BY: AH-86

SCALE: 3/4" = 1'-0"

MASTER DRAWING

SHEET NO. 9



PANDA RESTAURANT GROUP INC.
1683 Walnut Grove Ave.
Rosemead, California
91770
Telephone: 626.799.9898
Facsimile: 626.372.8288

All ideas, designs, arrangement and plans indicated or represented by this drawing are the property of Panda Express Inc. and were created for use on this specific project. None of these ideas, designs, arrangements or plans may be used by or disclosed to any person, firm, or corporation without the written permission of Panda Express Inc.

REVISIONS:	

ISSUE DATE:	
1	04.29.2021 ISSUE FOR PERMIT
2	06.25.2021 PERMIT COMM. & BID SET

DRAWN BY: SDT

PANDA PROJECT #: - S8-22-D8016

C&P PROJECT #: - 2200773

Cuhaci & Peterson
Architects Engineers Planners

2600 Maitland Center Pkwy, Maitland, FL 32751
P (407) 661-9100
F (407) 661-9101
www.c-p.com
Florida Corporate Certificate #AA 000026

06.25.2021

Jose J. DIAZ-VELAZQUEZ
Professional Engineer
License 1110C00000178184
State of Florida
Reason: This document has been electronically signed and sealed by Jose J. Diaz-Velazquez on the date adjacent to the seal using a S&MA authentication code. Printed copies of this document are not considered signed and sealed and the S&MA authentication code must be verified on any electronic copies.
Date: 20210625 08:56:07-0400

PANDA EXPRESS
TRUE WARM AND WELCOME 2300
LOT 3, LANDSTAR BLVD
ORLANDO, FL 32824

M-408

HOOD DETAIL PLAN

TRUE WARM & WELCOME 2300 R4