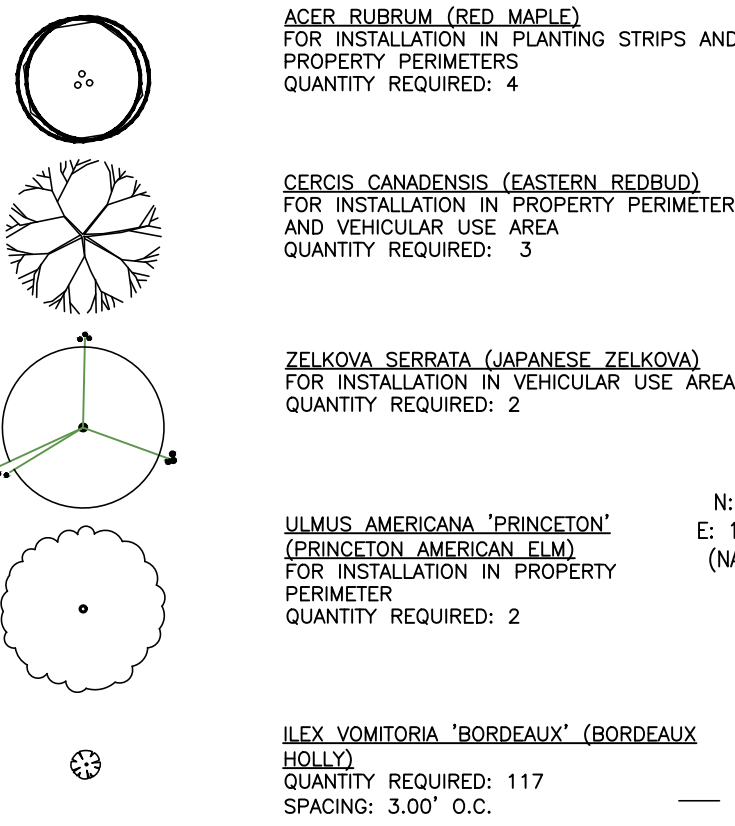


LANDSCAPE LEGEND



LANDSCAPING NOTES & PLANT SIZES:

PER GUILFORD COUNTY UDO - ARTICLE 6:

- PLANT SPECIES:
SPECIES USED IN REQUIRED STREET PLANTING YARDS, PARKING LOTS AND
PLANTING YARDS SHALL BE OF A LOCALLY ADAPTED NATURE
 - CANOPY TREES SIZE:
CANOPY TREES MUST BE A MINIMUM OF EIGHT (8) FEET HIGH AND TWO (2)
INCHES IN CALIPER, MEASURED SIX (6) INCHES ABOVE GRADE, WHEN PLANTED.
 - SHRUB SIZE:
ALL APPROVED SHRUBS SHALL BE INSTALLED AT A MINIMUM SIZE OF EIGHTEEN
(18) INCHES, SPREAD OR HEIGHT AND ARE EXPECTED TO REACH A MINIMUM
HEIGHT OF THIRTY-SIX (36) INCHES, AND A MINIMUM SPREAD OF THIRTY (30)
INCHES WITHIN THREE (3) YEARS OF PLANTING.
- PLANTING AREAS MUST BE 200 SF MINIMUM
- TOTAL PARKING SPACES PROVIDED: 19 (INCL. 2 ADA SPACES)

LOT 3,
P.B. 158, PG. 14
OWNER: NYE LANDS LLC
(HB ZONING - RESTAURANT)

LOT 6,
P.B. 120, PG. 57
OWNER: WEAVER INVESTMENT CO
STONEY CREEK VILLAGE SHOPPING CENTER
ZONING: HB

LOT 9,
P.B. 120, PG. 57
OWNER: WAMT LLC
ZONING: HB

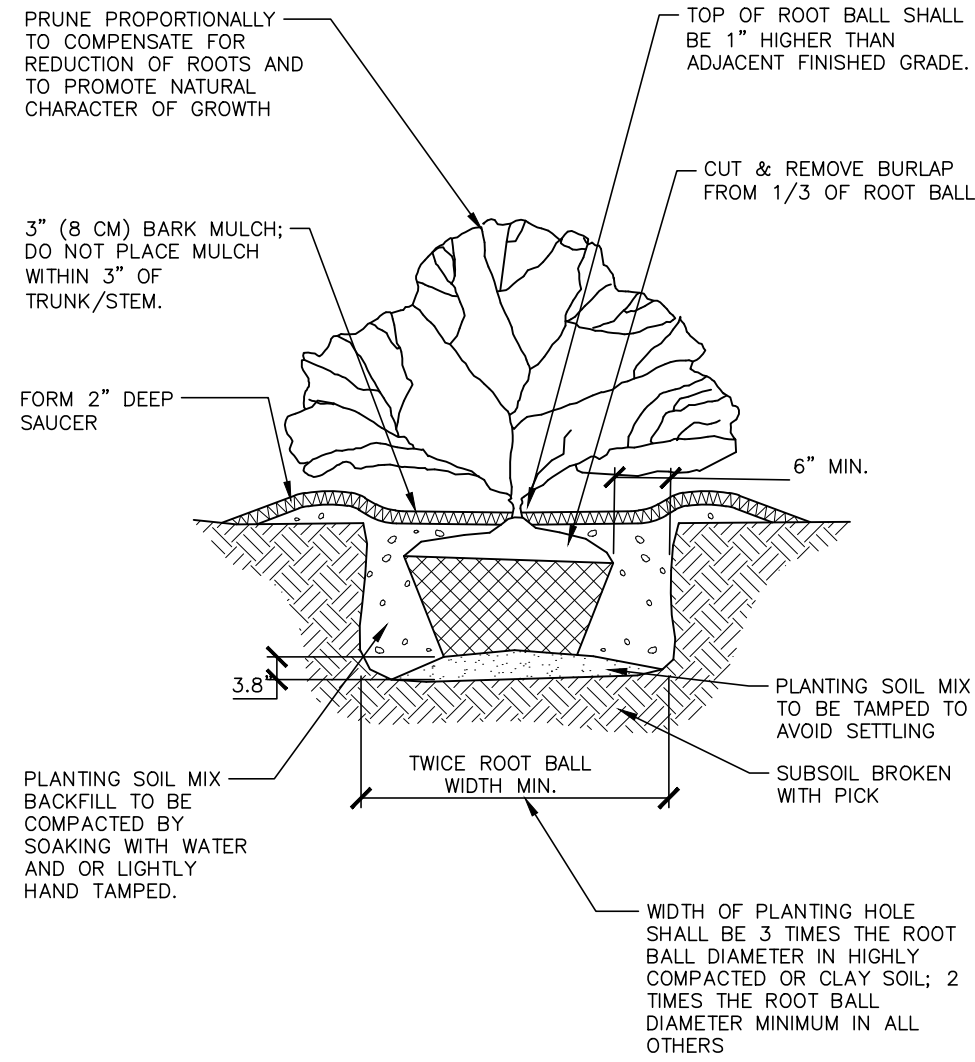
LOT 5,
P.B. 120, PG. 57
OWNER: 3D DEVELOPMENT
HOLDINGS LLC
(HB ZONING - AUTO
PARTS RETAIL SHOP)

LANDSCAPE NOTES

- ALL MATERIALS AND METHODS OF CONSTRUCTION SHALL BE IN ACCORDANCE WITH GUILFORD COUNTY LANDSCAPE MANUAL AND THE STATE OF NORTH CAROLINA STANDARDS AND SPECIFICATIONS.
- CONTRACTOR IS RESPONSIBLE FOR THE SITE INSPECTION BEFORE LANDSCAPE CONSTRUCTION AND INSTALLATION IN ORDER TO BECOME FAMILIAR WITH THE EXISTING CONDITIONS.
- LANDSCAPE CONTRACTOR IS RESPONSIBLE FOR LOCATING ALL UNDERGROUND UTILITIES BEFORE BEGINNING DEMOLITION OR INSTALLATION.
- CONTRACTOR SHALL NOTIFY LANDSCAPE ARCHITECT OF ANY DISCREPANCIES BETWEEN THE NOTES, SPECIFICATIONS, DRAWINGS OR SITE CONDITIONS FOR RESOLUTION PRIOR TO INSTALLATION.
- ANY DAMAGE TO UTILITIES SHALL BE REPAIRED AT THE CONTRACTOR'S EXPENSE.
- THIS PLAN IS FOR PLANTING PURPOSES ONLY. FOR INFORMATION REGARDING BUILDINGS, GRADING, WALLS, ETC., REFER TO ARCHITECTURE, SITE AND GRADING PLANS.
- VERIFICATION OF TOTAL PLANT QUANTITIES AS SHOWN IN THE PLANT SCHEDULE SHALL BE THE RESPONSIBILITY OF THE LANDSCAPE CONTRACTOR. ANY DISCREPANCIES SHALL BE BROUGHT TO THE ATTENTION OF THE LANDSCAPE ARCHITECT.
- CONTRACTOR TO ENSURE PROPER STABILIZATION AND SEEDING OF THE SITE IN ACCORDANCE WITH APPLICABLE REGULATIONS.
- LANDSCAPE MATERIAL SHALL BE WELL FORMED, VIGOROUS, GROWING SPECIMENS WITH GROWTH TYPICAL OF VARIETIES SPECIFIED AND SHALL BE FREE FROM DAMAGE, INSECTS AND DISEASES. MATERIAL SHALL EQUAL OR SURPASS #1 QUALITY AS DEFINED IN THE CURRENT ISSUE OF "AMERICAN STANDARD FOR NURSERY STOCK" AS PUBLISHED BY THE AMERICAN NURSERY & LANDSCAPE ASSOCIATION.
- ALL PLANT MATERIAL IS TO BE CAREFULLY HANDLED BY THE ROOT BALL, NOT THE TRUNK, BRANCHES AND/OR FOLIAGE OF THE PLANT. MISHANDLED PLANT MATERIAL MAY BE REJECTED BY THE LANDSCAPE ARCHITECT.
- ALL PLANT MATERIAL IS TO BE WELL ROOTED, NOT ROOT BOUND, SUCH THAT THE ROOT BALL REMAINS INTACT THROUGHOUT THE PLANTING PROCESS. DEFICIENT PLANT MATERIAL MAY BE REJECTED BY THE LANDSCAPE ARCHITECT OR OWNER.
- ALL PLANTS TO BE A MINIMUM OF WHAT IS SPECIFIED IN THE PLANT SCHEDULE. ANY CHANGES OR SUBSTITUTIONS SHALL BE APPROVED BY THE LANDSCAPE ARCHITECT AND GOVERNING JURISDICTION PRIOR TO ANY HOLE BEING DUG.
- CONTRACTOR TO COORDINATE WITH OWNER'S REPRESENTATIVE AND LANDSCAPE ARCHITECT TO ESTABLISH THE EXTENTS OF MULCH/SEED/SOD IF NOT SPECIFICALLY SHOWN ON PLANS.
- CONTRACTOR SHALL PROVIDE POSITIVE DRAINAGE IN ALL PLANTING AREAS.
- PROPOSED TREES TO BE PLANTED A MINIMUM 6 FEET FROM ANY LIGHT POLE AS MEASURED FROM TRUNK OF THE TREE TO THE POLE.
- PROPOSED TREES TO BE PLANTED A MINIMUM 7 FEET FROM ANY FIRE HYDRANT AS MEASURED FROM TRUNK OF THE TREE TO THE HYDRANT.
- CONTRACTOR SHALL COMPLETE SOIL TEST IN ALL PLANTING AREAS TO DETERMINE SOIL AMENDMENT REQUIREMENTS UNLESS WAIVED BY OWNER'S REPRESENTATIVE. CONTRACTOR SHALL ADJUST PH AND FERTILITY BASED UPON THE SOIL TEST RESULTS.
- TOPSOIL SHALL BE FREE OF MATERIAL LARGER THAN 1.0 INCH IN DIAMETER OR LENGTH AND SHALL NOT CONTAIN SLAG, CINDERS, STONES, LUMPS OF SOIL, STICKS, ROOTS, TRASH, OR OTHER EXTRANEIOUS MATERIAL.
- LOOSEN SUBGRADE / SURFACE SOIL TO A MINIMUM DEPTH OF 6 INCHES. APPLY SOIL AMENDMENTS AND FERTILIZERS AS REQUIRED BY THE SOIL TEST RESULTS TO ACHIEVE A HEALTHY GROWING MEDIA AND MIX THOROUGHLY INTO TOP 4 INCHES OF SOIL. SPREAD PLANTING SOIL MIX TO A DEPTH OF 6 INCHES BUT NOT LESS THAN REQUIRED TO MEET FINISH GRADES AFTER NATURAL SETTLEMENT. DO NOT SPREAD IF PLANTING SOIL OR SUBGRADE IS FROZEN, MUDDY, OR EXCESSIVELY WET.
- IF IMPORTED TOPSOIL IS REQUIRED, THE SUBGRADE SHALL BE SCARIFIED OR TILLED TO A DEPTH OF AT LEAST 6 INCHES PRIOR TO INSTALLATION OF IMPORTED TOPSOIL. FOLLOWING INSTALLATION OF IMPORTED TOPSOIL, THE TOPSOIL SHALL BE TILLED TO INTEGRATE THE SOIL PROFILES.
- PLANT MATERIALS ARE TO BE GUARANTEED FOR A PERIOD OF 12 MONTHS. PLANT MATERIALS WHICH REMAIN UNHEALTHY WILL BE REPLACED BY THE LANDSCAPE CONTRACTOR BEFORE THE EXPIRATION OF THE GUARANTEE PERIOD OR IMMEDIATELY IF SO DIRECTED BY THE OWNER'S REPRESENTATIVE OR LANDSCAPE ARCHITECT.
- ALL TREE PLANTINGS SHALL BE MULCHED TO A DEPTH OF 3 INCHES, AND WITH A MINIMUM 3 FOOT RADIUS FROM BASE OF TREE OR TO DRIPLINE. MULCH SHALL BE FREE OF TRASH AND MAINTAINED WEED FREE. MULCH SHALL NOT COVER THE ROOT FLARE. CONFIRM MULCH SPECIFICATIONS WITH OWNER'S REPRESENTATIVE OR LANDSCAPE ARCHITECT.
- DO NOT PRUNE TREES AND SHRUBS BEFORE DELIVERY. PROTECT BARK, BRANCHES, AND ROOT SYSTEMS FROM SUN SCALD, DRYING, SWEATING, WHIPPING, AND OTHER HANDLING AND TYING DAMAGE. DO NOT BEND OR BIND TREES OR SHRUBS IN SUCH A MANNER AS TO DESTROY THEIR NATURAL SHAPE. PROVIDE PROTECTIVE COVERING OF EXTERIOR PLANTS DURING DELIVERY. DO NOT DROP EXTERIOR PLANTS DURING DELIVERY AND HANDLING.
- DELIVER EXTERIOR PLANTS AFTER PREPARATIONS FOR PLANTING HAVE BEEN COMPLETED AND INSTALL IMMEDIATELY. IMMEDIATELY AFTER UNLOADING, STAND THE TREES UP TO REDUCE THE RISK OF SUN SCALD. PROPERLY STAGED TREES ARE STANDING, UNTIED AND SPACED. UNLESS IMMEDIATELY INSTALLED, SET EXTERIOR PLANTS AND TREES IN SHADE, PROTECT FROM WEATHER AND MECHANICAL DAMAGE, AND KEEP ROOTS MOIST.
- SEE LANDSCAPE DETAILS FOR TREE STAKING REQUIREMENTS.
- EXCAVATE EDGES OF ALL PLANTING BEDS TO 2 INCH DEPTH TO FORM A NEAT AND CRISP DEFINITION.
- CONTRACTOR SHALL REMOVE DEBRIS AND FINE GRADE ALL PLANTING AREAS PRIOR TO INSTALLATION.
- FINISH GRADING: GRADE PLANTING AREAS TO A SMOOTH, UNIFORM SURFACE PLANE WITH LOOSE, UNIFORMLY FINE TEXTURE. GRADE TO WITHIN PLUS OR MINUS 1/2 INCH OF FINISH ELEVATION. ROLL AND RAKE, REMOVE RIDGES, AND FILL DEPRESSIONS TO MEET FINISH GRADES. LIMIT FINISHED GRADING TO AREAS THAT CAN BE PLANTED IN THE IMMEDIATE FUTURE.

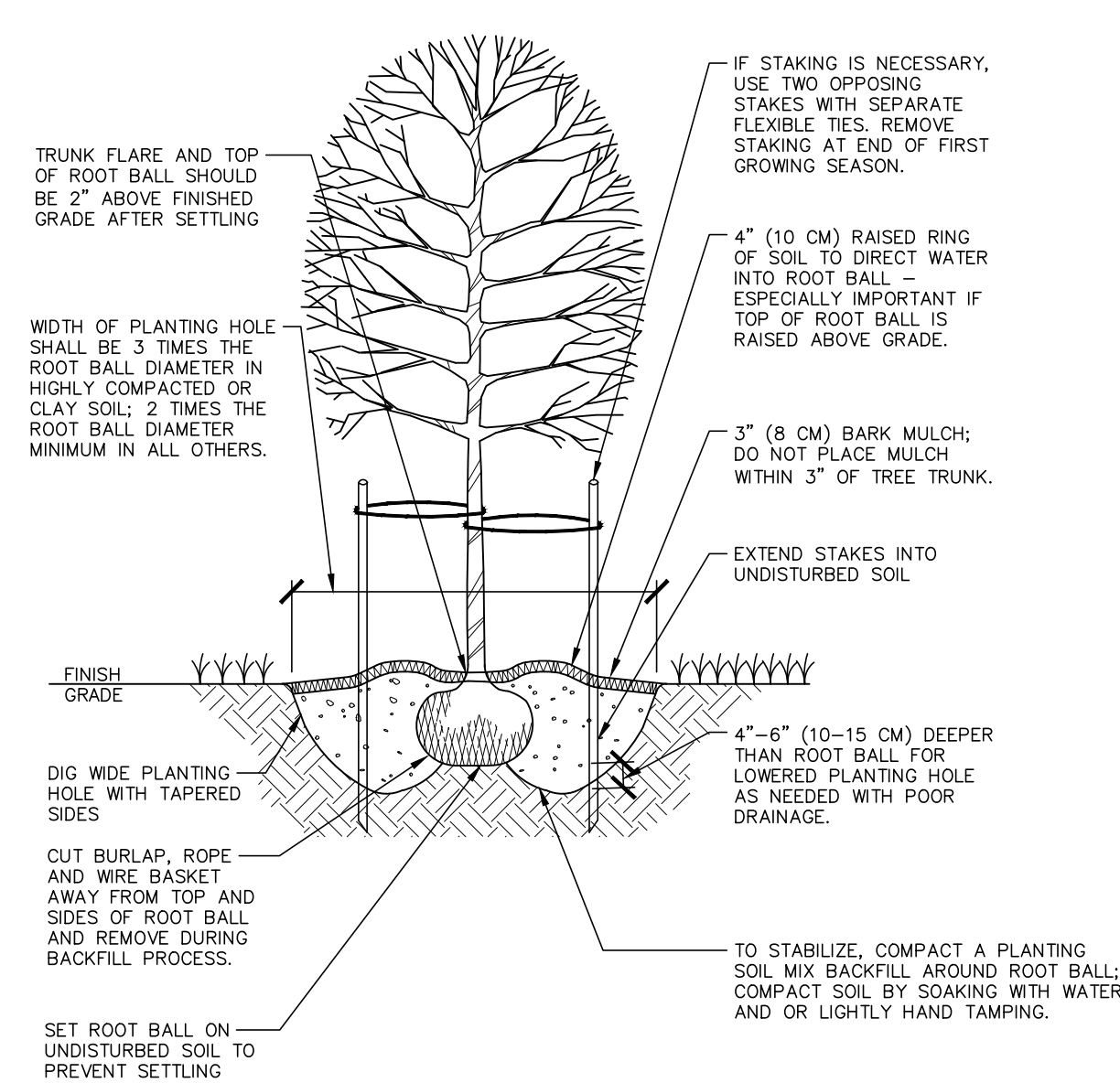
VICINITY MAP

1" = 1000'



01 SHRUB PLANTING

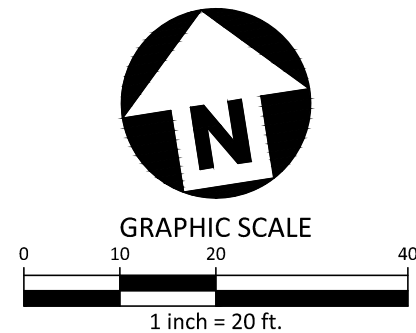
SCALE: 3/8"=1'-0"



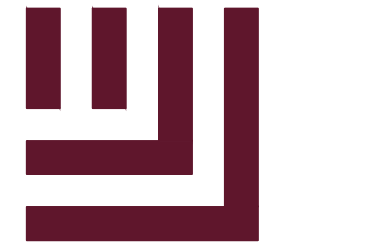
02 TREE PLANTING

SCALE: 3/8"=1'-0"

ALL CONSTRUCTION SHALL BE IN ACCORDANCE WITH THE CURRENT GUILFORD COUNTY ENGINEERING DESIGN AND CONSTRUCTION STANDARDS



PRELIMINARY DRAWING - NOT RELEASED FOR CONSTRUCTION



McADAMS

The John R. McAdams Company, Inc.
2905 Meridian Parkway
Durham, NC 27713

phone 919. 361. 5000
fax 919. 361. 2269
license number: C-0293, C-187

www.mcadamsco.com

CLIENT

CAPITAL GROWTH BUCHALTER
361 SUMMIT BLVD, STE 100
BIRMINGHAM, ALABAMA
PHONE: 205.263.4589



STARBUCKS - BURLINGTON RD
MINOR SITE PLAN SUBMITTAL
6405 BURLINGTON ROAD
WHITSETT, NORTH CAROLINA 27377



REVISIONS

NO.	DATE	REVISION
1	08.10.2021	REVISED PER STARBUCKS & COUNTY COMMENTS
2	-	-
3	-	-
4	-	-
5	-	-
6	-	-

PLAN INFORMATION

PROJECT NO. CGB-20050
FILENAME CGB20050X+SITE
CHECKED BY LAW
DRAWN BY LAM
SCALE 1" = 20'
DATE 03.25.2021

SHEET

LANDSCAPE PLAN

L5.00