

# PARCEL MAP NO. 36-1

IN THE COUNTY OF MONO  
STATE OF CALIFORNIA

BEING A DIVISION OF LOT 37, WITHIN SIERRA VALLEY TRACT  
NO.2 ASSESSMENT DISTRICT, MAMMOTH LAKES. RECORDED IN BOOK 1,  
PAGES 2 AND 2A OF MAPS OF ASSESSMENT DISTRICTS FILED IN THE  
OFFICE OF THE COUNTY RECORDER IN THE COUNTY OF MONO, STATE  
OF CALIFORNIA.

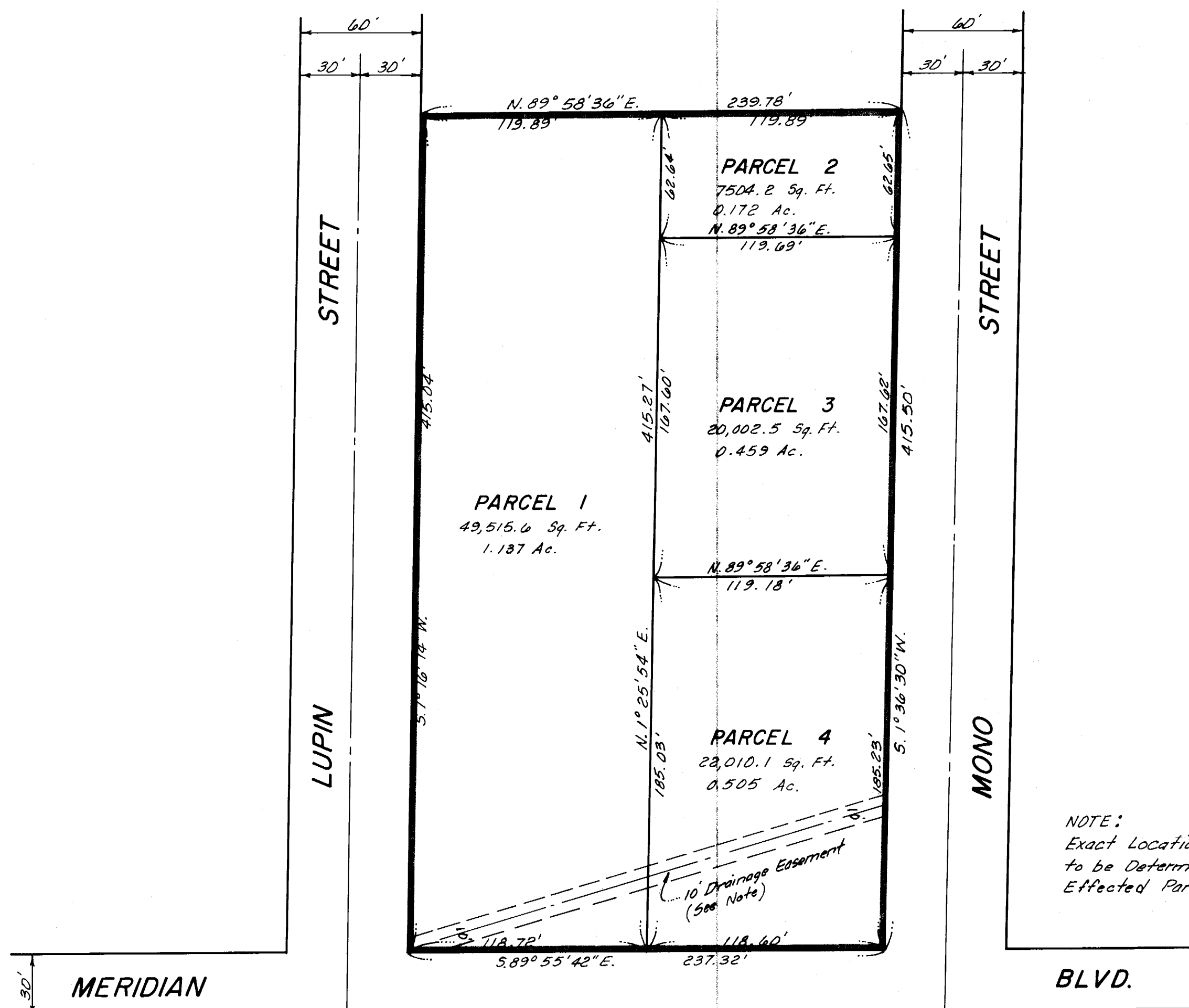
## ENGINEERS CERTIFICATE:

This Map was prepared under my direction and was compiled from record data in conformance with the requirements of the Subdivision Map Act at the request of Mr. & Mrs. E.A. French and Mr. & Mrs. H.E. Pierce in June 1971. I hereby certify that it conforms to the approved Tentative Map and the conditions of approval thereof; that all provisions of applicable State Laws and Local Ordinances have been complied with.

*William H. Jennings*  
William H. Jennings R.C.E. 16553

## BASIS OF BEARING:

The bearing  $S. 1^{\circ}36'30''W.$  of the West line of Mono Street as shown on Assessment Diagram, Sierra Valley Tract No. 2, recorded in Book 1, pages 2 and 2A of Maps of Assessment Districts in the Office of the County Recorder, County of Mono, was taken as the basis of bearing shown on this Map.



## COUNTY SURVEYOR'S CERTIFICATE:

This Map has been examined this 14<sup>th</sup> day of October, 1971, for conformance with the requirements of Section 11575 of the Subdivision Map Act.

*Richard L. Gool*  
County Surveyor

No. 1684

## RECORDER'S CERTIFICATE:

Filed for record this 14<sup>th</sup> day of October, 1971, at 10:00AM in book

7 of Recent Maps at pages 59  
at the request of Mr. French & Mr. Pierce

*Clay M. Walsh*  
County Recorder

## PLANNING COMMISSION CERTIFICATE:

This Map has been examined this 28<sup>th</sup> day of Sept, 1971, for conformance with the requirements of Mono County Ordinance No. 367 and the conditionally approved Tentative Parcel Map

*J. E. Beale*  
Chairman, County Planning Commission

Vol. 7 Pg. 59