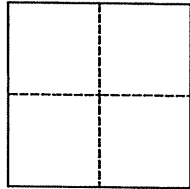


REVISED

CORNER RECORD

Agency Index **BK 102 PG 13**
Document Number **CR 10617**

City of CASTRO VALLEY County of ALAMEDA, California
Brief Legal Description RY77V7 (FAIRMONT DRIVE EAST OF FOOTHILL BLVD)



CORNER TYPE

Government Corner ☒ Control
Meander ☐ Property
Rancho ☐ Other

Date of Survey 07/24/2017

COORDINATES (Optional)

N. _____ E. _____

Elevation _____

Units Metric ☐ U.S. Survey Foot ☒

Horizontal Datum _____

Zone _____ Epoch Date _____

Vertical Datum _____

☐ Complies with Public Resources Code §§8801-8819

☐ Complies with Public Resources Code §§8890-8902

PLS Act Ref.:

☒ 8765(d)

☐ 8771

☐ 8773

☐ Other:

Corner/
Monument:

☐ Left as found

☐ Established

☐ Rebuilt

☒ Pre-Construction

☐ Found and tagged

☐ Reestablished

☐ Referenced

☐ Post-Construction

Narrative of corner identified and monument as found, set, reset, replaced, or removed:

☒ See sheet #2 for description(s):

*FOUND COUNTY BRASS CAP MON IN MON WELL, DOWN 12", STAMPED "PLAZA 6B"
SET FOUR MAG NAILS AND TIES TO XT45T1 AND YU56U2
AS SHOWN ON SHEET 2.*

SURVEYOR'S STATEMENT

This Corner Record was prepared by me or under my direction in conformance with

the Professional Land Surveyors' Act on JULY 30, 2017

Signed

P.L.S. or R.C.E. No. LS 5837



COUNTY SURVEYOR'S STATEMENT

This Corner Record was received

September 20, 2017

and examined and filed

15 MARCH 2018

Signed

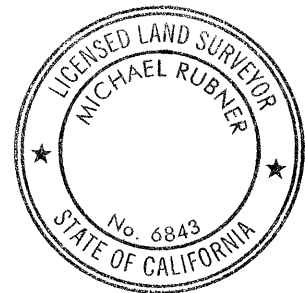
P.L.S. or R.C.E. No. 6843

Title

COUNTY SURVEYOR

County Surveyor's Comment

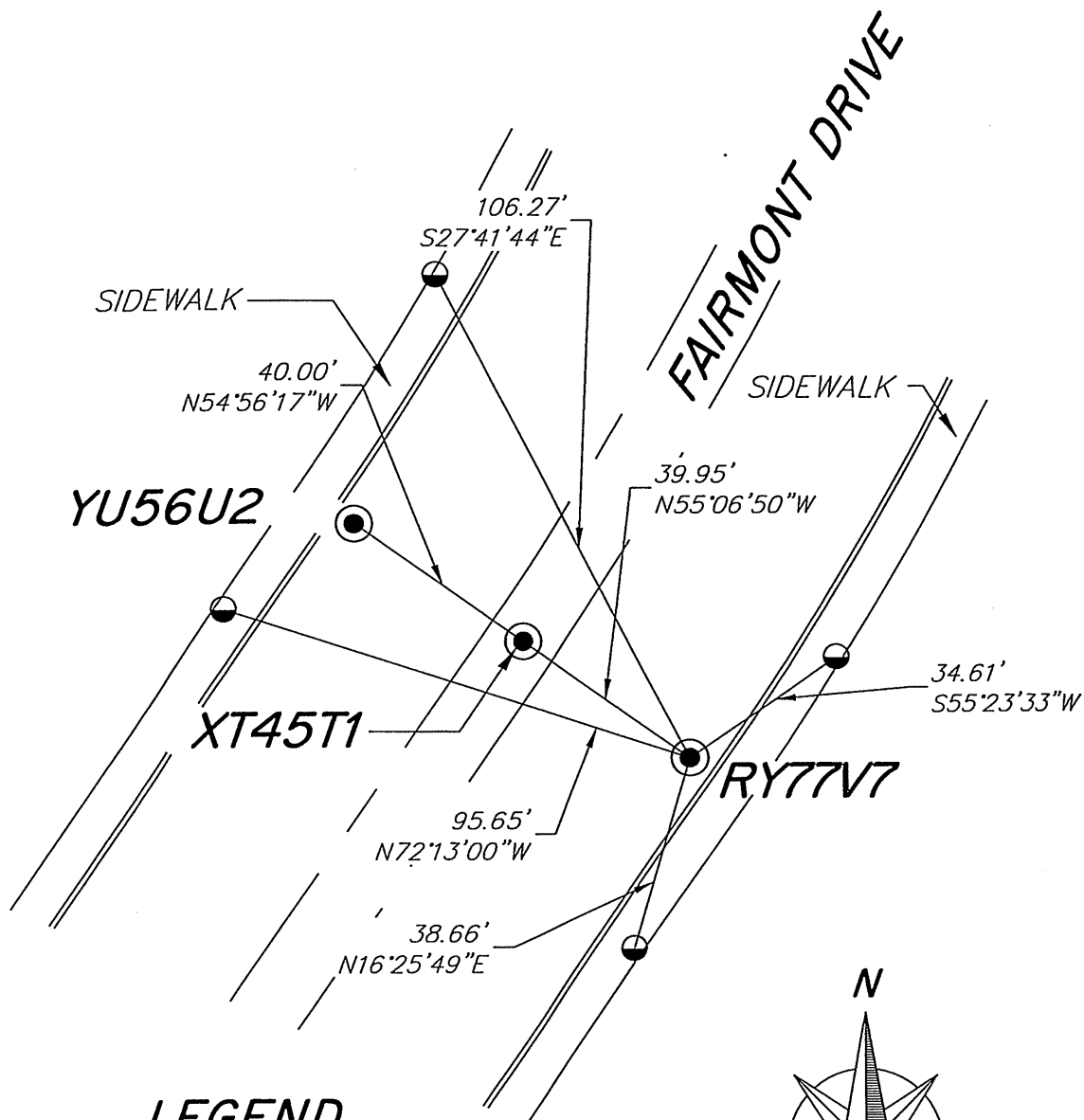
REVISED (26/02/2018)



SPEC 2279

RY77V7

NO SCALE

**LEGEND**

● FOUND ACBCM IN MON WELL

● SET MAG NAIL UNLESS OTHERWISE SHOWN

ACBCM ALAMEDA COUNTY
BRASS CAP MONUMENT

AA##A# ALAMEDA COUNTY MONUMENT ID

NOTE THAT BEARINGS ARE
APPROXIMATE AND ARE TO
BE USED FOR ANGLE
CALCULATIONS ONLY.