

## GENERAL NOTES

THESE DRAWINGS ARE SUBJECT TO AN APPROVAL OF THE BUILDING DEPARTMENT, FIRE MARSHAL, UTILITY COMPANY AND OTHER AGENCIES AUTHORITY HAVING JURISDICTION (AHJ). BY THE ACT OF SUBMITTING A BID PROPOSAL FOR WORK, THE CONTRACTOR HAS REVIEWED THE PLANS THOROUGHLY AND ACCEPT FULL RESPONSIBILITY OF PLAN CORRECTIONS AND ASSOCIATED CONSTRUCTION COSTS REQUIRED BY AHJ.

# ELECTRICAL SYMBOLS LIST

TRUE WARM & WELCOME 2300 RS

This item has been electronically signed and sealed by Gregory D. Taylor, P.E. on January 12, 2022 using a digital signature.



# LIGHTING FIXTURE SCHEDULE

PROVIDED FOR INFORMATION ONLY.  
VERIFY AND INSTALL PER ELECTRICAL DRAWING

ITEM	SYMBOL	DESCRIPTION	QTY.	MFR. & CAT. NO.	WATTAGE	REMARK
INTERIOR LIGHTING ITEM						
L1		T-BAR CEILING RECESSED MOUNTED LED LIGHTING FIXTURE, 2' X 4', 120V BAKED-ON WHITE ENAMEL FINISH.		LSI FIXTURE: SFP24-LED-FS-UNV-DIM	40	KITCHEN CEILING LIGHTS, FURNISHED BY OWNER INSTALLED BY GC
L1B		T-BAR CEILING RECESSED MOUNTED LED LIGHTING FIXTURE, 2' X 2', 120V BAKED-ON WHITE ENAMEL FINISH.		LSI FIXTURE: SFP22-LED-FS-UNV-DIM	30	KITCHEN CEILING LIGHTS, FURNISHED BY OWNER INSTALLED BY GC
L1C		T-BAR CEILING RECESSED MOUNTED LED LIGHTING FIXTURE, 1' X 4', 120V BAKED-ON WHITE ENAMEL FINISH.		LSI FIXTURE: SFP14-LED-FS-UNV-DIM		KITCHEN CEILING LIGHTS, FURNISHED BY OWNER INSTALLED BY GC
L1EM		T-BAR CEILING RECESSED MOUNTED LED LIGHTING EMERGENCY FIXTURE, 2' X 4', 120V BAKED-ON WHITE ENAMEL FINISH.		LSI FIXTURE: SFP24-LED-FS-UNV-DIM	32	EMERGENCY KITCHEN CEILING LIGHTS FURNISHED BY OWNER INSTALLED BY GC
L4H		UNIVERSAL MOUNT EXIT SIGN, LED LIGHTED, 120/27V WITH BATTERY PACK, 2 FACE, GREEN LETTER		EXITRONIX GVEK-U-8P-WB-BL-R6	5	EXIT SIGN FURNISHED BY OWNER, INSTALLED BY GC
L6A		HOOD LIGHT		FURNISHED & INSTALLED BY EQUIPMENT SUPPLIER	12	LIGHTS SUPPLIED & PRE-WIRED BY HOOD VENDOR. ELECTRIC CONTRACTOR TO CONNECT MAIN WIRES TO SHUNT TRIP BREAKER AND HOOD CONTROL PANEL
L6B		WALK-IN COOLER LED LIGHT, 120 V 48"		KASON FIXTURE: # 1810LCT400	36	FURNISHED BY WIC VENDOR, G.R.E., INSTALLED BY GC
L19		DOWN LIGHT, RECESSED IN CEILING		ELITE HOUSING: LD6IC-AT LED MODULE: ELITE LED LIGHTING RL607-750L-DIMTR-120-30K-SN-SN-90+	18	FURNISHED BY OWNER, INSTALLED BY GC
L19EM		EMERGENCY DOWN LIGHT, RECESSED IN CEILING		ELITE HOUSING: LD6IC-AT LED MODULE: ELITE LED LIGHTING RL607-750L-DIMTR-120-30K-SN-SN-90+	14	EMERGENCY RECESSED DOWN LIGHT - NORMALLY ON INVERTER UNIT - ISOLITE, IMI-12-LC-V1 FURNISHED BY OWNER INSTALLED BY GC
L20W		3 3/4" ADJUSTABLE MR16 DOWN LIGHT, RECESSED IN CEILING. *W* SHALL DESIGNATE WHITE TRIM USED FOR MENU BD. SOFFIT		LIGHTOLIER: LYTECASTER-378WHX FRAME-IN KIT: 302MRSPX BULB: MR16 - GE - PRECISE IR 37 WATT 40° BEAM	40	FURNISHED BY OWNER, INSTALLED BY GC
L20B		3 3/4" ADJUSTABLE MR16 DOWN LIGHT, RECESSED IN CEILING. *B* SHALL DESIGNATE BLACK TRIM USED FOR DINING ROOM CEILING GRID		LIGHTOLIER: LYTECASTER-378WHX FRAME-IN KIT: 302MRSPX BULB: MR16 - GE - PRECISE IR 37 WATT 40° BEAM	40	FURNISHED BY OWNER, INSTALLED BY GC
L30		WHITE LED AT SERVICE COUNTER SOFFIT & DINING ROOM PARTIAL HEIGHT WALL		LUXEM BRIGHT FIXTURE: BLAZE LED	60	FURNISHED BY OWNER, INSTALLED BY GC
L32		WHITE LED AT MURAL LIGHT COVE		NOVA FLEX - PRO SERIES FIXTURE: BENDABLE 3916		FURNISHED BY OWNER, INSTALLED BY GC
L45		12" DIA. DECORATIVE MORILL PENDANT LF INCANDESCENT		LBL LIGHTING, MODEL # 6227801-839 BULB: LED EDISON LAMP, 1173467		FURNISHED BY OWNER, INSTALLED BY GC
L100		MICRO INVERTER		ISOLITE #MI 125	125	FURNISHED BY OWNER, INSTALLED BY GC
L40C-R		17.3" DIA. RED CUPOLA PENDANT		HI-LITE, MODEL #H-VLPDM3-RDMT		FURNISHED BY OWNER, INSTALLED BY GC
S		SPEAKER		-		FURNISHED BY MUSIC VENDOR, INSTALLED BY MUSIC VENDOR

NIGHT LIGHTING REQUIREMENTS: "NL" DESIGNATION INDICATED NIGHT LIGHT ON UNSWITCHED CIRCUIT.

- ONE NL BY SERVICE COUNTER, POS / CASHIER
- ONE NL BY POS / CASHIER AT DRIVE THRU STATION IF APPLICABLE
- ONE NL BY EACH EXIT DOORS IN DINNING ROOM & BACK OF HOUSE

## EXTERIOR LIGHTING

L40		LINEAR LIGHT AT EXTERIOR STORAGE ROOM		COOPER MX-4V12-LD4-6-DR-UNV-L840-CD1-WL-U	57.3	FURNISHED BY OWNER, INSTALLED BY GC
L85		WALL MOUNTED OVER SERVICE DOOR FIXTURE		HOWARD: VL305 30W LED, BRONZE	42	OVER EXTERIOR SERVICE DOOR. REFER ELEVATIONS FOR HEIGHT FURNISHED BY OWNER, INSTALLED BY GC
L86		NAVILITE EMERGENCY LIGHT		EXITRONIX MLED1-G-WP	2	OVER EXTERIOR ENTRANCE & SERVICE DOORS. REFER ELEVATIONS FOR HEIGHT. FURNISHED BY OWNER, INSTALLED BY GC
L86		EXTERIOR RECESS EMERGENCY LIGHT		ELITE HOUSING: LD6IC-AT LED MODULE: ELITE LED LIGHTING WET LOCATION: RL607-14W-120-FL-30K-SN-SN	14	EMERGENCY RECESSED DOWN LIGHT - NORMALLY ON INVERTER UNIT - ISOLITE, IMI-12-LC-V1 FURNISHED BY OWNER INSTALLED BY GC
L90		DECORATIVE LED WALL SCONCE		HINKLEY LIGHTING, ATLANTIS, BRONZE; 1649B2-LED	12	AT PORTAL OF ENTRY DOOR. REFER ELEVATIONS FOR HEIGHT FURNISHED BY OWNER, INSTALLED BY GC
L92		WALL MOUNTED OVER SERVICE DOOR FIXTURE		HINKLEY LIGHTING, ATLANTIS, BRONZE; 1649B2-LED		AT PORTAL OF ENTRY DOOR. REFER ELEVATIONS FOR HEIGHT FURNISHED BY OWNER, INSTALLED BY GC
L97		LED MOTION SECURITY FLOODLIGHT		LITHONIA LIGHTING OLF 2RH 40K 120V MO BZ	19	INTERIOR LIGHT SENSOR TO BE WALL MOUNTED AT +142' FURNISHED BY OWNER, INSTALLED BY GC
L91		DECORATIVE LED WALL SCONCE		HINKLEY LIGHTING, SILO, BRONZE; 135944Z-L1; LED		ALONG REAR EIFS BAND FURNISHED BY OWNER, INSTALLED BY GC

## CEILING SCHEDULE

INSTALLED AND FURNISHED BY G.C. UNLESS NOTED OTHERWISE

## EQUIPMENT SCHEDULE

PLUMBING										ELECTRICAL										DESCRIPTION																									
FS INDIRECT CONNECTION TO FLOOR SINK										D DIRECT CONNECTION										O OWNER(PANDA EXPRESS, INC.)																									
D DIRECT CONNECTION										C CONVENIENT OUTLET										GC GENERAL CONTRACTOR																									
RIH ROUGH IN HEIGHT (TO CENTER OF CONNECTION)										FSO FLOOR STUB OUT										EC ELECTRICAL CONTRACTOR																									
										DC DROPPED CORD										KEC KITCHEN EQUIPMENT COMPANY																									
SUPPLY BY	GAS			WASTE			COLD WATER			HOT WATER			CONNECTION			LOAD			PHASE			H.P.			VOLTS			REMARKS			DIMENSIONS			MANUFACTURE			MODEL #			EQUIPMENT			NO.		
	K	BTU	R.I.H.	SIZE	TYPE	SIZE	R.I.H.	SIZE	R.I.H.	SIZE	R.I.H.	SIZE	R.I.H.	TYPE	WATT													W x D x H (Ø x H)																	
SERVING AREA EQUIPMENT																																													
O																											SEE DETAIL	SEE PLAN	KEC	CUSTOM	HOT WELLS COUNTER SERVICE	1B													
O																											SEE DETAIL	SEE PLAN	KEC	CUSTOM	SNEEZE GUARD	1S2													
O																											D	475W	1	120	3 HEATING ELEMENTS	42.375" x 4.25" x 2.375"	GENERAL	43" RADIANT TOP HEATER	1S2B1										
O																											D	625W	1	120	4 HEATING ELEMENTS	55.375" x 4.25" x 2.625"	GENERAL	56" RADIANT TOP HEATER (2)	1S2B2										
O																											D	475W	1	120	3 HEATING ELEMENTS	42 1/8x4.25x2 5/8"	GENERAL	43" RADIANT TOP HEATER (2)	1S2-S1d										
O																											D	15A	1	120	SEE DETAIL	SEE PLAN	KEC	CUSTOM	CASHER & BEVERAGE COUNTER	2Q									
O																											D	650W	1	120	INDUCTION WARMER	15 3/4" DIA	I/O CONTROLS CORP	ABC-065-14	INDUCTION WELL - 17QT	3F									
O																											C	650W	1	120	INDUCTION WARMER	12 1/8" DIA	I/O CONTROLS CORP	ABC-065-10	INDUCTION WELL - 11QT	3G									
O																																													
O																																													
O																																													
O																																													
O																																													
O																																													
O																																													
O																																													
O																																													
O																																													
O																																													
O																																													
O																																													
O																																													
O																																													
O																																													
O																																													
O																																													
O																																													
O																																													
O																																													
O																																													
O																																													
O																																													
O																																													
O																																													
O																																													
O																																													
O																																													
O																																													
O																																													
O																																													
O																																													
O																																													
O																																													
O																																													
O																																													
O																																													
O																																													
O																																													
O																																													
O																																													
O																																													
O																																													
O																																													



1. VERIFY QUANTITIES AND REQUIREMENTS OF HVAC & KITCHEN EQUIPMENT PRIOR TO ROUGH IN.
2. TELEPHONE/DATA/TV CABLES AND WIRES, TERMINATIONS, AND ALL REQUIRED CABLE AND JACKS WILL BE INSTALLED BY THIRD PARTY.
3. POWER SUPPLY FOR COMPUTER, CASH REGISTER (83A & 94) SHALL BE ON THE SAME CIRCUIT BREAKER, WISOLATED GROUND & ORANGE RECEPTACLE.
4. CIRCUITRY SHOWN WITHOUT TICKS SHALL HAVE (2) WIRES PLUS EQUIPMENT GROUNDING CONDUCTOR.
5. ALL MULTI-WIRE BRANCH CIRCUITS SHALL HAVE SEPARATE NEUTRALS TO MEET THE REQUIREMENTS OF 2014 NEC 210.4(B).
6. TRANSFORMERS SHALL BE MOUNTED ABOVE CEILING BELOW TRUSSES WITH LOW VOLTAGE WIRING FEEDING TO ALL EXTERIOR LIGHTS.
7. UNDERGROUND CONDUITS SHALL BE 12" BELOW F.F.

## POWER PLAN GENERAL NOTES

2

NOT TO SCALE

E-100

1. ALL CIRCUITRY/CONDUIT FOR FRONT LINE EQUIPMENT TO BE ROUTED IN CASEWORK TO J-BOX IN WALL AND CONCEALED IN WALL.
2. PROVIDE SEALS AND EXPANSION COUPLINGS ON ALL CONDUITS ENTERING OR LEAVING AREA OF TEMPERATURE DIFFERENCE. REFER TO WIRING NOTES 6/E-400 FOR ADDITIONAL INFORMATION.
3. PROVIDE (2) 1-1/2" CONDUITS WITH PULL STRINGS FROM CASH REGISTER TO MANAGER STATION. SEE P.O.S. AND SERVICE LINE ELEVATIONS, 3/E-200.
4. SEE 'MANAGER STATION ELEVATION' 1/E-200 FOR ADDITIONAL OUTLETS AND J-BOXES.
5. ANSUL PULL STATION. REFER TO DETAIL, 2/E-400.
6. REFER TO 'LTG AND DOOR HEATER' WIRING DIAGRAM, 10/E-400.
7. REFER TO 'COOLER EVAPORATOR COIL' WIRING DIAGRAM, 8/E-400.
8. SHOW WINDOW RECEPTACLE SHALL BE CONTROLLED VIA SWITCH "b". REFER TO LIGHTING SWITCHBANK SCHEDULE, SHEET 4/E101. RECEPTACLE SHALL BE MOUNTED IN WALL AS CLOSE TO TOP OF STRUCTURAL HEADER AS POSSIBLE.
9. BUILDING SIGNAGE/LOGO DEDICATED/ PROPOSED W.P. J-BOX FOR SIGNAGE. COORDINATE LOCATION WITH ARCHITECT / OWNER / SIGN PACKAGE. SIGN DISCONNECT PROVIDED BY SIGN CONTRACTOR.
10. REFER TO 'FREEZER EVAPORATOR COIL' WIRING DIAGRAM, 9/E-400. THE FAN COIL UNIT IS POWERED FROM THE CONDENSER UNIT VIA DICONNECT CONNECTION. HEAT TAPE PROVIDED AND INSTALLED BY ELECTRICIAN.
11. NOT USED.
12. SEE TICKET PRINTER ELEVATIONS, 7/E-200.
13. HOOD CONTROL PANEL/ANSUL SYSTEM CABINET. MOUNT CABINET DIRECTLY BELOW T-BAR CEILING.
14. PROVIDE 2-GANG J-BOX @ 48" AFF FOR HOOD CONTROL SWITCHES. REFER TO M-400 AND M-401.
15. 1" CONDUIT STUB UP LOCATION IN STAINLESS STEEL POWER PANEL FOR ISLAND KITCHEN EQUIPMENT CONNECTION. REFER TO DETAIL 2/A-109. COORDINATE LOCATION WITH ARCHITECT / OWNER.
16. ROUTE CABLING / CIRCUITRY THROUGH 1" CONDUIT IN SLAB.
17. UTILIZE SEAL TIGHT CONDUIT FOR ALL WIRING INCLUDED ALONG LOW WALL PANEL.
18. DEVICES UNDER HOOD TO BE PROVIDED AND INSTALLED WITH GROUND FAULT CIRCUIT BREAKER AND WATERPROOFING BOX (RED DOT #CKSUV) UNLESS OTHERWISE NOTED. REFER TO CCKLINE ELECTRICAL ELEVATIONS, 6/E-200. ROUTE HOMERUN THROUGH CONTRACTOR INTERFACED WITH THE HOOD FIRE SUPPRESSION SYSTEM. REFERENCE 13/E-400 FOR ADDITIONAL INFORMATION.
19. SIMPLEX RECEPTACLE TO BE CONNECTED TO BACK-OF-HOUSE LIGHTING CIRCUITRY/CONTROL. CONTRACTOR TO PROVIDE PIGTAIL FROM CIRCULATION PUMP.
20. PROVIDE WEATHERPROOF. RECEPTACLE FOR HEAT TAPE. COORDINATE FINAL LOCATION WITH REFRIGERATION INSTALLER.
21. ELECTRIC GRILL '23E': FEED WITH (2) #6, (1) #10 GROUND, 3/4" CONDUIT. REFER TO 4/E-200.
22. SEE DRIVE THRU ELEVATION 2/E-200 FOR CONDUIT SIZES AND CONFIGURATIONS.
23. FURNISH AND INSTALL NORTH SHORE SAFETY 50AMP 2PHASE GFCI DEVICE (OR EQUIVALENT) FOR GRILL 23E. FASTEN A PLASTIC LABEL STATING CIRCUIT AND EQUIPMENT SERVED. REFER TO 9/E-200 FOR MOUNTING LOCATION.
24. PROVIDE WATERPROOFING. COVER, IN-USE RED DOT (#CKSUV).
25. SEE FOR DRIVE-THRU ELEVATIONS, 2/E-200.
26. SEE DRINK STATION ELEVATIONS, 5/E-200.
27. SEE 3/E-200 FOR SERVICE LINE ELEVATIONS.
28. SEE DEVICE / RECEPTACLE SCHEDULE 3/E-400.
29. SEE DINING ROOM MONITOR ELEVATION, DETAIL 8/E-200.
30. PROVIDE AND INSTALL 3/4" CONDUIT AND PULL STRING FROM CLOSEST LANDSCAPE AREA, THROUGH WALL UP TO EMPTY FLUSH MOUNTED JUNCTION BOX @ 54" A.F.F. (FOR IRRIGATION CONTROLS). CLOSE OFF CONDUIT IN LANDSCAPE AREA WITH REMOVABLE CAP. UTILIZE WP CIRCUIT A-53 NEAR ENTRY POINT.
31. REFER TO 9/E-200 FOR INSTALLATION OF CO2 MONITOR.
32. SEE SWITCH BANK ELEVATION , DETAIL 7/E-200.
33. FLY LIGHT RECEPTACLE SHALL BE INSTALLED WITH A RECESSED CLOCK OUTLET. TYP OF ALL LOCATIONS.
34. SEE SECURITY KEY PAD ELEVATION 1/E-200.
35. CONNECT HEAT LAMPS TO COUNTER-MOUNTED SWITCH PROVIDED AND INSTALLED BY CONTRACTOR. COORDINATE EXACT LOCATION WITH KITCHEN EQUIPMENT PROVIDER.
36. PANDA EXPRESS TO PROVIDE CO2 MONITOR, E.C. TO MOUNT OVER J-BOX WITH WIRING THROUGH WALL CONDUIT FOR CLEAN INSTALLATION. PROVIDE ALL OTHER REQUIRED CONNECTIONS AND COMPONENTS FOR FULLY WORKING SYSTEM.
37. PROVIDE IN-GRADE QUAZITE 8"X8" PC STYLE POLYMER CONCRETE BOX OR EQUAL FOR UNDERGROUND CABLE REQUIRED FOR THE STORE. PART NO. PC081XXXXX OR SIMILAR. REFER TO ELECTRICAL SITE PLAN 1/E105.
38. PROVIDE 1" CONDUIT FOR CABLE DEDICATED FOR ENTIRE STORE FROM IN-GRADE 8X8 QUAZITE BOX TO EXTERIOR CLOSET 6X6 FLUSH MOUNTED JUNCTION BOX. TERMINATE INTERIOR ABOVE CEILING.
39. PROVIDE FLUSH MOUNTED NEMA 1 6X6 JUNCTION/PULL BOX AT +48" - HUBBELL OR EQUAL. ROUTE CABLE FROM EXTERIOR 6X6 IN 1" CONDUIT THROUGH BUILDING. TERMINATE INTERIOR ABOVE CEILING.
40. PROVIDE NORTH SHORE SAFETY 50AMP 2PHASE GFCI DEVICE(OR EQUAL) INLINE WITH 23E ELECTRIC GRILL.
41. FIRE SUPPRESSION SHUT DOWN CONTACTOR LOCATION ABOVE CEILING, REFER TO 13/E-400.
42. CONTRACTOR TO FURNISH J-BOX FOR AWNING LIGHT FIXTURES. COORDINATE IN FIELD FOR EXACT LOCATION FOR J-BOX AND ANY ADDITIONAL REQUIREMENTS PRIOR TO STARTING ANY WORK AND INCLUDE ALL ASSOCIATED COSTS IN THE BID.
43. SEE P.O.S. AND SERVICE LINE ELEVATIONS, SHEET 3 / E-200.
44. CONTRACTOR SHALL PROVIDE CONTROL WIRING FOR EVAPORATOR COIL SERVICE SWITCH TO CONDENSOR ON ROOF TO SHUT DOWN SIMULTANEOUSLY WITH EVAPORATOR WHEN INTERIOR EVAPORATOR, BLOWER, FANS ARE BEING SERVICES OR CLEANED. COORDINATE WITH EQUIPMENT MANUFACTURER PRIOR TO START OF WORK.
45. PROVIDE A 1" CONDUIT FOR CIRCUIT 'A' 69 FOR POWER SUPPLY TO THE DRIVE THRU HOT WELL CABINET. PROVIDE A 3/4" CONDUIT FROM THE THIS LOCATION TO ABOVE CEILING NEAR THE MANAGER CABINET FOR LOW VOLTAGE WIRING.
46. ELECTRICIAN TO WALL MOUNT A NEMA ELECTRICAL DISCONNECT BOX. ELECTRICIAN TO SUPPLY A WIRE WHIP FROM BOX TO MACHINE, FINAL CONNECTIONS BY HOBART SERVICE.
47. PROVIDE J-BOX FOR DOOR RELEASE BUTTON.
48. CONTRACTOR SHALL PROVIDE DISCONNECTING MEANS THAT COMPLY WITH NEC 422.31. THE DISCONNECTING MEANS SHALL BE WITHIN SIGHT FROM THE APPLIANCE OR BE CAPABLE OF BEING LOCKED IN THE OPEN POSITION IN COMPLIANCE WITH NEC 110.25.

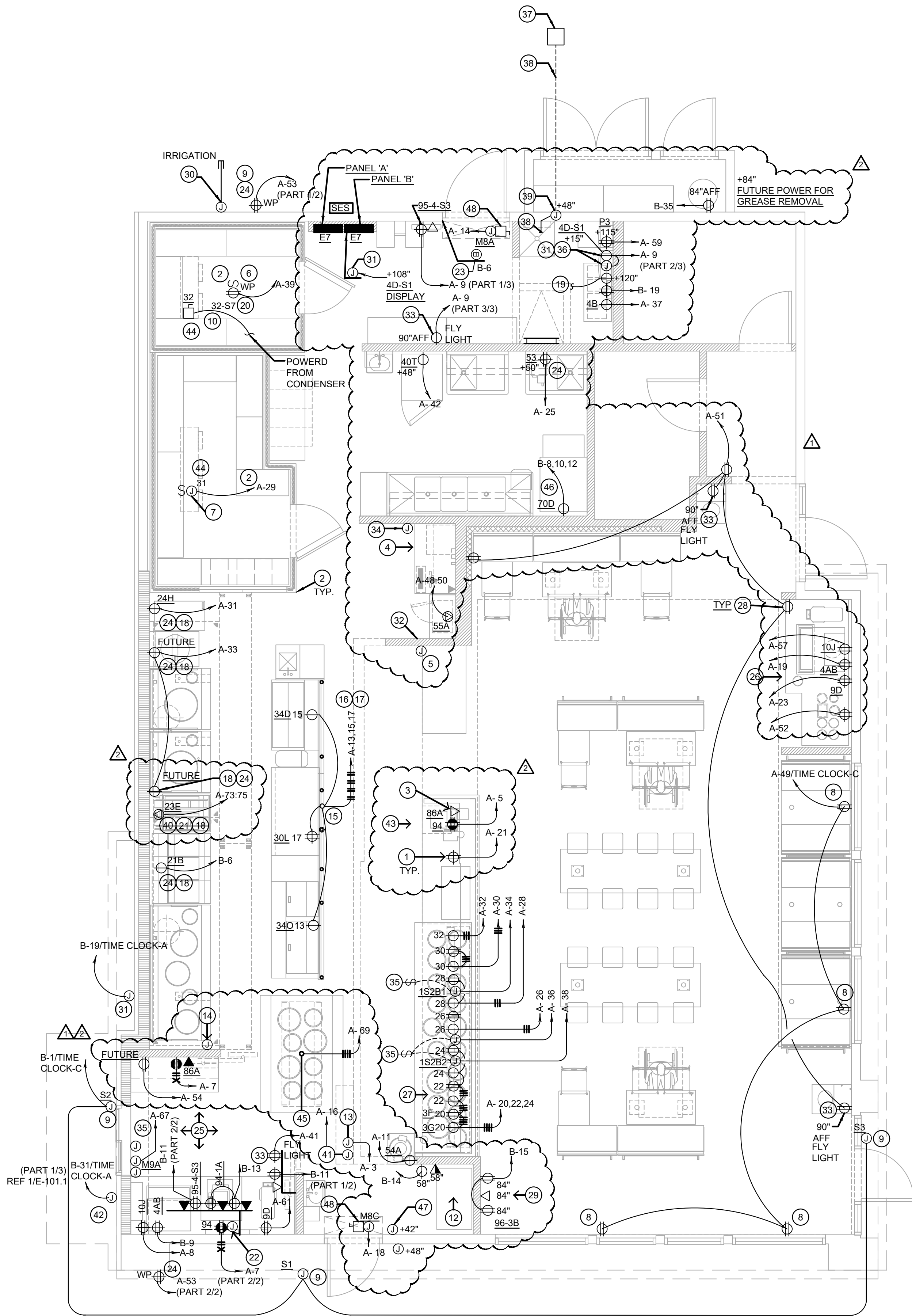
#

## POWER PLAN KEYED NOTES

3

NOT TO SCALE

E-100



ALL 120 VOLT, 20 AMP RECEPTACLES LOCATED UNDER COUNTERS WITHIN SERVING AREA 101. DRIVE-THRU 102, AND KITCHEN 103 TO BE SERVED FROM GFCI-TYPE CIRCUIT BREAKERS PER NEC 210.8 (B) (2). ALL OTHER KITCHEN 120 VOLT RECEPTACLES SHALL PROVIDE GFCI RECEPTACLES.

## POWER FLOOR PLAN

1

Scale: 1/4"=1'-0"

E-100



PANDA EXPRESS, INC.  
1683 Walnut Grove Ave.  
Rosemead, California  
91770

Telephone: 626.799.9898  
Facsimile: 626.372.8288

All ideas, designs, arrangement and plans indicated or represented by this drawing are the property of Panda Express Inc. and were created for use on this specific project. None of these ideas, designs, arrangements or plans may be used by or disclosed to any person, firm, or corporation without the written permission of Panda Express Inc.

### REVISIONS:

OWNER REVISION	11-08-21
----------------	----------

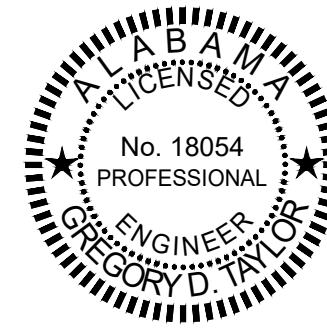
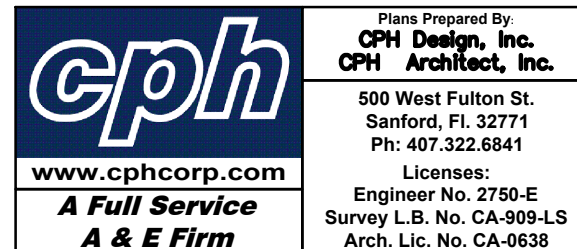
### ISSUE DATE:

1	CHECK SET	07-19-21
2	PERMIT SET	09-17-21
3	BID SET	11-08-21
4	BID SET REISSUE	01-14-22

DRAWN BY: KTF

PANDA PROJECT #: S8-22-D8433

ARCH PROJECT #: P7363



## PANDA EXPRESS

TRUE WARM & WELCOME 2300  
101 STADIUM WAY  
MADISON, AL 35758

# E-100

POWER FLOOR PLAN

TRUE WARM & WELCOME 2300 R5





PANDA EXPRESS, INC.  
1683 Walnut Grove Ave.  
Rosemead, California  
91770  
Telephone: 626.799.9898  
Facsimile: 626.372.8288

All ideas, designs, arrangement and plans indicated or represented by this drawing are the property of Panda Express Inc. and were created for use on this specific project. None of these ideas, designs, arrangements or plans may be used by or disclosed to any person, firm, or corporation without the written permission of Panda Express Inc.

REVISIONS:


ISSUE DATE:

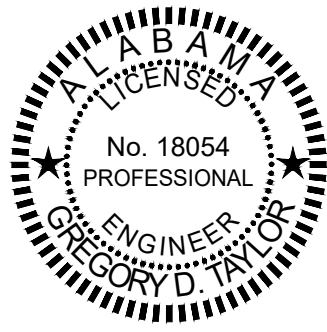
1	CHECK SET	07-19-21
2	PERMIT SET	09-17-21
3	BID SET	11-08-21
4	BID SET REISSUE	01-14-22

DRAWN BY: KTF

PANDA PROJECT #: S8-22-D8433  
ARCH PROJECT #: P7363

www.cphcorp.com  
**A Full Service  
A & E Firm**

Plans Prepared By  
**CPI Design, Inc.  
CPI Architect, Inc.**  
500 West Fulton St.  
Sanford, FL 32711  
Ph: 407.322.6841  
Licenses:  
Engineer No. 2759-E  
Survey L.B. No. CA-909-LS  
Arch. Lic. No. CA-0638



1/12/2022

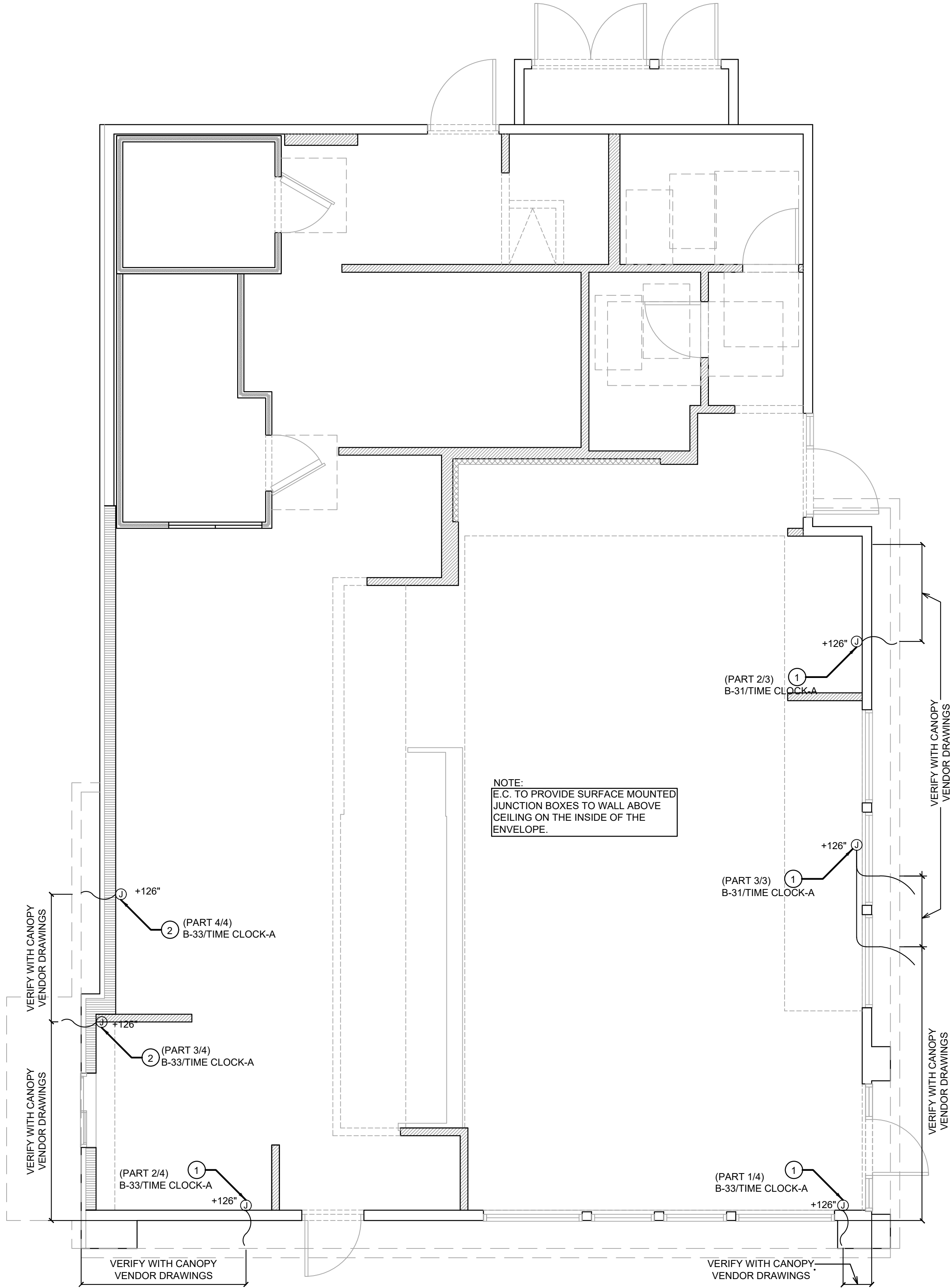
PANDA EXPRESS

TRUE WARM & WELCOME 2300  
101 STADIUM WAY  
MADISON, AL 35758

E-101.1

CANOPY LIGHTING PLAN

TRUE WARM & WELCOME 2300 R5



- E.C. TO PROVIDE J-BOX WITH 3' WHIP FOR CONNECTION TO PANDA EXPRESS PROVIDED LIGHTED CANOPY. E.C. TO MAKE FINAL CONNECTION.
- E.C. TO PROVIDE J-BOX WITH 3' WHIP FOR CONNECTION TO PANDA EXPRESS PROVIDED LIGHTED DRIVE THRU CANOPY. E.C. TO MAKE FINAL CONNECTION.
- ALL JUNCTION BOXES ON THIS SHEET TO BE RECESS MOUNTED.

④ CANOPY LIGHTING KEYED NOTES	2	LIGHTING FLOOR PLAN	1
NOT TO SCALE	E-101.1	Scale: 1/4"=1'-0"	E-101.1









REVISIONS:

2	OWNER REVISION	01-07-
---	----------------	--------

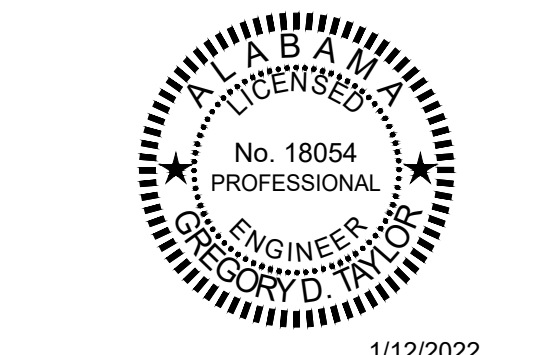
ISSUE DATE:		
1	CHECK SET	07-19
2	PERMIT SET	09-17
3	BID SET	11-08
4	BID SET REISSUE	01-14

DRAWN BY: KTF

[REDACTED]

PANDA PROJECT #: S8-22-D8433

ARCH PROJECT #: P7363

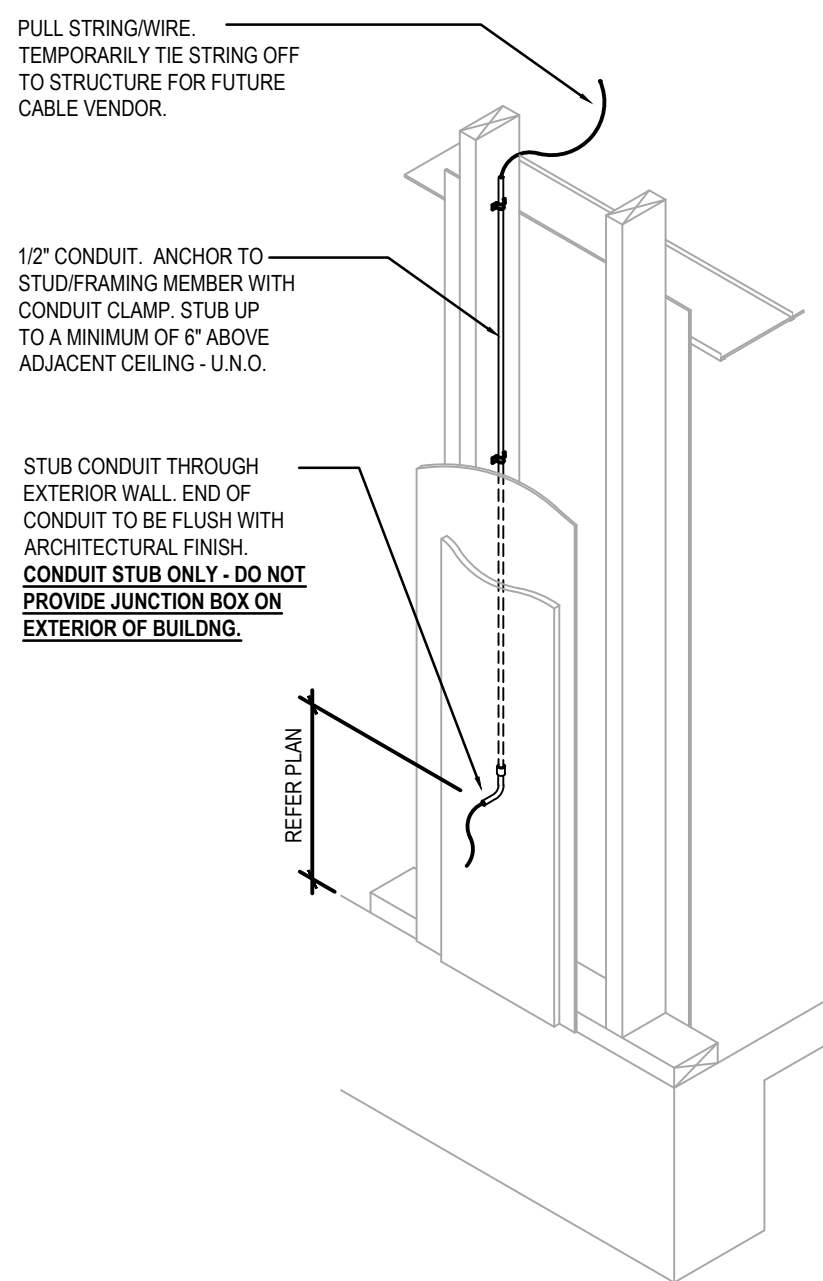


**PANDA EXPRESS**  
TRUE WARM & WELCOME 2300  
101 STADIUM WAY  
MADISON, AL 35758

E-102

SECURITY CAMERA PLAN

This item has been electronically signed and sealed by Gregory D. Taylor, P.E. on January 12, 2022 using a digital signature. Printed copies of this document are not considered signed and sealed and the signature must be verified on any electronic copies.



SECURITY CAMERA PLAN	1
Scale= 1/4" = 1'-0"	E-102

Scale= 1/4" = 1'-0"





PANDA EXPRESS, INC.  
1683 Walnut Grove Ave.  
Rosemead, California  
91770  
Telephone: 626.799.9898  
Facsimile: 626.372.8288

All ideas, designs, arrangement and plans indicated or represented by this drawing are the property of Panda Express Inc. and were created for use on this specific project. None of these ideas, designs, arrangements or plans may be used by or disclosed to any person, firm, or corporation without the written permission of Panda Express Inc.

REVISIONS:  
OWNER REVISION 01-07-22

ISSUE DATE:  
1 CHECK SET 07-19-21  
2 PERMIT SET 09-17-21  
3 BID SET 11-08-21  
4 BID SET REISSUE 01-14-22

DRAWN BY: KTF

PANDA PROJECT #: S8-22-D8433  
ARCH PROJECT #: P7363

www.cphcorp.com  
A Full Service  
A & E Firm

Plans Prepared By  
CPH Design, Inc.  
CPH Architect, Inc.  
500 West Fulton St.  
Sanford, FL 32771  
Ph: 407.322.6841  
Licenses:  
Engineer No. 2759-E  
Survey L.B. No. CA-909-LS  
Arch. Lic. No. CA-0638



1/12/2022

PANDA EXPRESS  
TRUE WARM & WELCOME 2300  
101 STADIUM WAY  
MADISON, AL 35758

E-104

ROOF POWER PLAN

TRUE WARM & WELCOME 2300 R5

- ALL ROOF MOUNTED EQUIPMENT SHALL BE IN NEMA-3R ENCLOSURES.
- ALL CONDUIT RUNS SHOWN ON THE ROOF SHALL BE RUN BELOW IN THE CEILING SPACE WHERE AMBIENT TEMPERATURE WILL BE BELOW 30° C. FINAL CONNECTIONS TO THE ROOF EQUIPMENT IS LIMITED TO 5'-0" OF DIRECT SOLAR EXPOSURE.
- NOT USED.
- VERIFY ALL FUSE SIZES AND TYPES WITH THE AIR CONDITIONING EQUIPMENT MANUFACTURER PRIOR TO INSTALLATION.
- REVIEW THE MECHANICAL PLANS FOR THE AIR CONDITIONING CONTROL REQUIREMENTS AND SCOPE OF WORK PRIOR TO BIDDING AND INCLUDE ALL COSTS IN BID.
- VERIFY CONNECTION POINTS OF ALL HVAC EQUIPMENT PRIOR TO INSTALLATION. PROVIDE CONTROL VOLTAGE CONNECTION TO DUCT MTD. SMOKE DETECTOR AS REQUIRED BY MECHANICAL DRAWING M-100.
- SEE MECHANICAL DRAWINGS FOR EXACT LOCATIONS OF MECHANICAL EQUIPMENT AND THERMOSTATS. PROVIDE RACEWAY SYSTEM FOR ALL CONTROL WIRING AS REQUIRED BY MECHANICAL DRAWING M-100.
- G.C. COORDINATE ELECTRICAL, MECHANICAL, FIRE ALARM (IF REQUIRED) FOR INTERLOCK SEQUENCE.
- RESTROOM EXHAUST FAN TO BE POWERED FROM BACK OF HOUSE LIGHTING CIRCUIT. SEE DETAIL 5 / E-400 FOR ADDITIONAL INFORMATION.

ROOF PLAN GENERAL NOTES2

NOT TO SCALEE-104

- ROUTE HOMERUN THROUGH BACK OF HOUSE LIGHTING CIRCUIT. REFER TO LIGHTING PLAN, SHEET 1 / E-101. FAN TO BE CONTROLLED BY SWITCH FOR BACK OF HOUSE LIGHTING.
- DUCT SMOKE DETECTOR, FURNISHED BY MECHANICAL/FACTORY, WIRED BY ELECTRICAL / FIRE ALARM CONTRACTOR. FURNISH AND INSTALL ALL RACEWAY, WIRING, AND ADDITIONAL ACCESSORIES REQUIRED FOR CODE COMPLIANCE AND UNIT SHUTDOWN.
- CIRCUIT FEEDS FROM PANELBOARD - THROUGH HOOD CONTROL PANEL - UP TO ROOF. REFER TO DETAIL, SHEET 3 / E-401 & KITCHEN HOOD SUBMITTAL DATA.
- REFER TO CONDENSING UNIT WIRING DIAGRAM, SHEET 7 / E-400.
- STRUT RACK SUPPORT FOR EQUIPMENT DISCONNECT SWITCHES. REFER TO DETAIL, SHEET 2 / E-401.
- PROVIDE AND INSTALL 2-1/2" DIA GALVANIZED RIGID METAL CONDUIT AND WEATHERHEAD AS SHOWN. CONDUIT TO BE STRAPPED TO CLOSEST JOIST TO THE MANAGER'S STATION (FULL DEPTH). SEE DETAIL 2/A-108.
- DO NOT INSTALL UNTIL BACK DRAFT DAMPER INSTALLATION IS COMPLETE. UTILIZE FACTORY KNOCKOUTS FOR ELECTRICAL RUN FOR THIS FAN. REFER TO SHEET M-402.
- MOUNT PHOTOCELL ON CONDENSER RACK ON THE ROOF FACING NORTH. CONNECT TO LIGHTING CONTROL PANEL.
- STUB ELECTRICAL FEED FOR EF-1 & EF-2, THROUGH ROOF ON HINGE SIDE OF EXHAUST FANS, IN LOCATION AS SHOWN ON POWER ROOF PLAN. REFER TO DETAIL 3 / M-501 FOR ADDITIONAL DETAILS.
- ROUTE POWER FEEDS VIA FACTORY PROVIDED THRU-BASE CONNECTION AREA. COORDINATE WITH MECHANICAL.
- UNIT INCLUDES FACTORY MOLDED CASE DISCONNECT SWITCH (NO OCP). VERIFY WITH MECHANICAL SUBMITTAL DATA. PROVIDE DISCONNECT IF / AS REQUIRED.
- CONVENIENCE RECEPTACLES WILL BE FACTORY INSTALLED ON RTU UNITS AND POWERED VIA CIRCUIT B-29. PROVIDE METAL IN-USE.

ROOF PLAN KEYED NOTES3

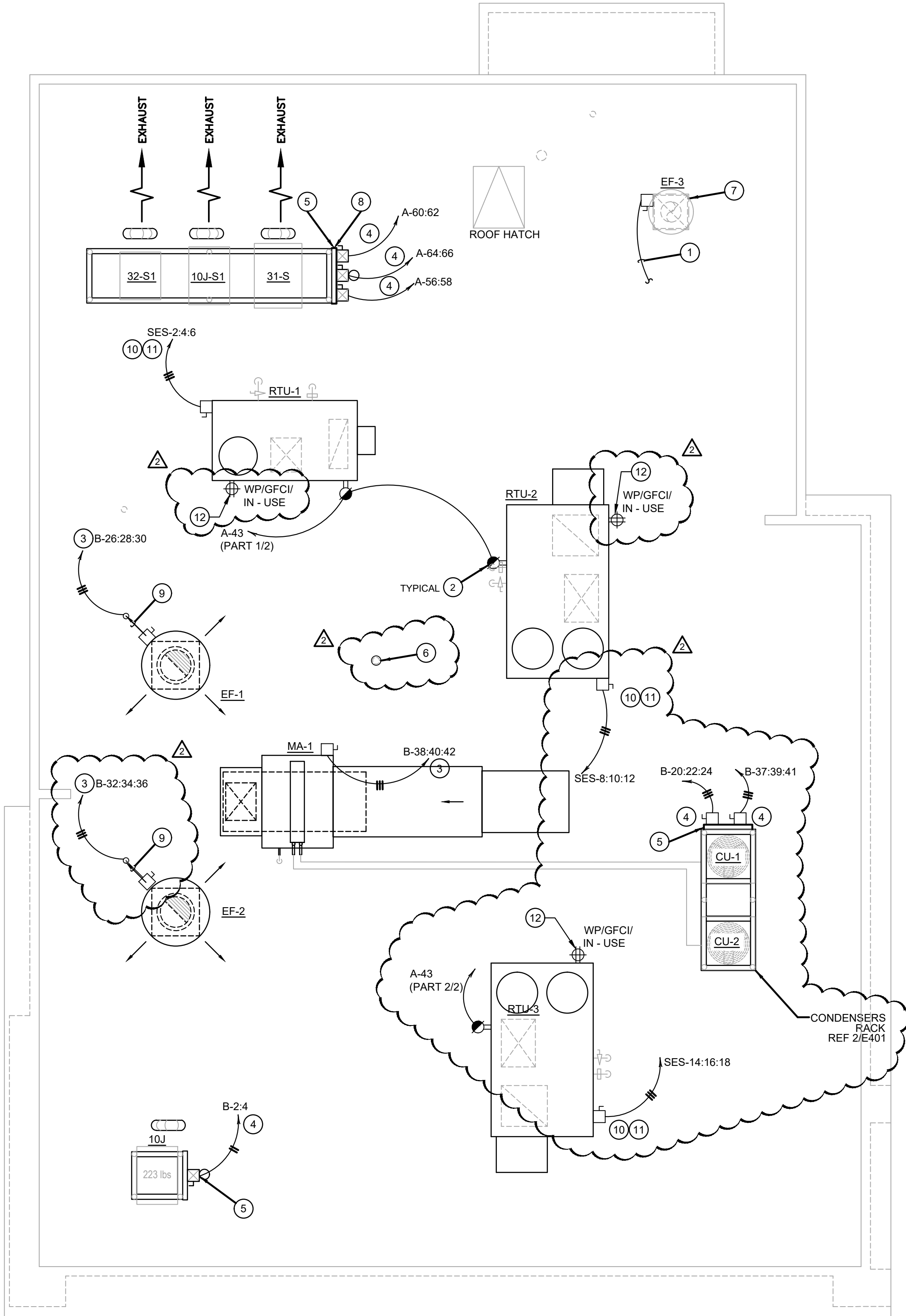
NOT TO SCALEE-104

ROOFTOP EQUIPMENT SCHEDULE										
TAG	DESCRIPTION	KW	H.P.	FLA	VOLT/Ø	WIRE, CONDUIT	CONN.	MOUNT HEIGHT	DISC. SW. WITH RK1 FUSES PER MFR'S REQ'S. AND/OR REMARKS	
RTU1	A/C UNIT			32	208V.3Ø	3 #6, #10 GND., 1" C.	□	AT UNIT	60A. 3P. 3F. WP (1)(4)	
RTU2	A/C UNIT			46	208V.3Ø	3 #6, #10 GND., 1" C.	□	AT UNIT	60A. 3P. 3F. WP (1)(4)	
RTU3	A/C UNIT			46	208V.3Ø	3 #6, #10 GND., 1" C.	□	AT UNIT	60A. 3P. 3F. WP (1)(4)	
CU-1	CONDENSING UNIT		21.4	208V.3Ø	3 #10, #10 GND., 1" C.	□	AT UNIT	30A. 3P. 3F. WP		
CU-2	CONDENSING UNIT		21.4	208V.3Ø	3 #10, #10 GND., 1" C.	□	AT UNIT	30A. 3P. 3F. WP		
MA-1	MAKE-UP AIR UNIT	5.0	17.5	208V.3Ø	3 #10, #12 GND., 3/4" C.	□	AT UNIT	(1)(4)		
EF-1	EXHAUST FAN	3.0	11.0	208V.3Ø	3 #12, #12 GND., 3/4" C.	□	AT UNIT	(1)		
EF-2	EXHAUST FAN	2.0	7.8	208V.3Ø	3 #12, #12 GND., 3/4" C.	□	AT UNIT	(1)		
EF-3	EXHAUST FAN	1/4	5.8	120V.1Ø	2 #12, #12 GND., 3/4" C.	□	AT UNIT	30A. 2P. 1F. WP (1)(4)		
31-S	W/I COOLER COND.		13.6	208V.1Ø	2 #10, #10 GND., 3/4" C.	☒	AT UNIT	(2)(3)		
32-S1	W/I FREEZER COND.		23.8	208V.1Ø	2 #8 #10 GND., 3/4" C.	☒	AT UNIT	60A. 2P. 2F. WP (3)(5)		
10J-S1	ICE MACHINE COND.		11.8	208V.1Ø	2 #12, #12 GND., 3/4" C.	☒	AT UNIT	(2)(3)		

- DISCONNECT SWITCH PROVIDED WITH UNIT.
- COMBINATION 30A. 2P. 2F. WP DISCONNECT SWITCH WITH RK5 FUSES PER MANUFACTURER RECOMMENDATION.
- COMBINE CIRCUITRY IN 1" CONDUIT FROM J-BOX ON EQUIPMENT DISCONNECT SWITCH SUPPORT. REFER TO DETAIL 2 / E-401.
- ELECTRICAL FEEDS ARE TO BE ROUTED FROM PLENUM SPACE, UP THROUGH EQUIPMENT CURB, INTO BOTTOM OF EQUIPMENT, THROUGH FACTORY INSTALLED WATER TIGHT CONNECTIONS.
- WP DISCONNECT SWITCH WITH RK5 FUSES PER MANUFACTURER RECOMMENDATION.

HVAC EQUIPMENT SCHEDULE4

NOT TO SCALEE-104



ROOF POWER PLAN1

1/4" = 1'-0"E-104

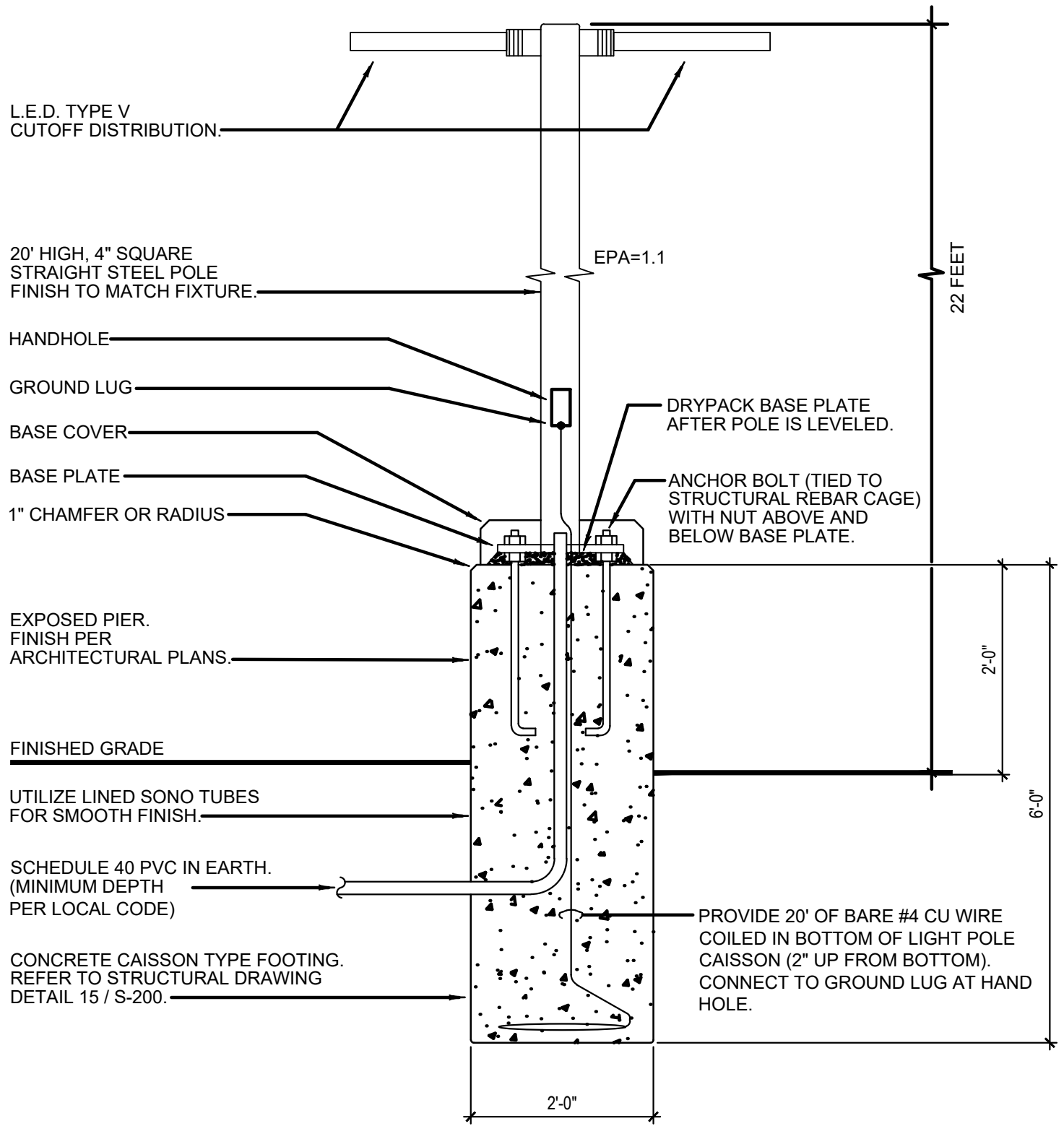


- COORDINATE SERVICE ENTRANCE SECTION, TRANSFORMER, PRIMARY SERVICE, SECONDARY SERVICE, AND SWITCHING CABINET OR POWER POLE LOCATIONS WITH SERVING UTILITY COMPANY AND COMPLY AS REQUIRED.
- CONTRACTOR TO BE RESPONSIBLE FOR COORDINATING AND PROVIDING REQUIRED WORK FOR SUPPLYING ELECTRICAL POWER AND TELEPHONE UTILITIES TO THE BUILDING.
- CONTRACTOR TO PROVIDE ALL TRENCHING, BACKFILL, CONDUIT, PAD, ETC. PER THE SERVING UTILITY COMPANY SHOP DRAWINGS AND SPECIFICATIONS.
- NOT USED.
- MINIMUM CIRCUITRY ON THIS SHEET TO BE #10, 3/4" CONDUIT.

SITE PLAN GENERAL NOTES 2  
E-105

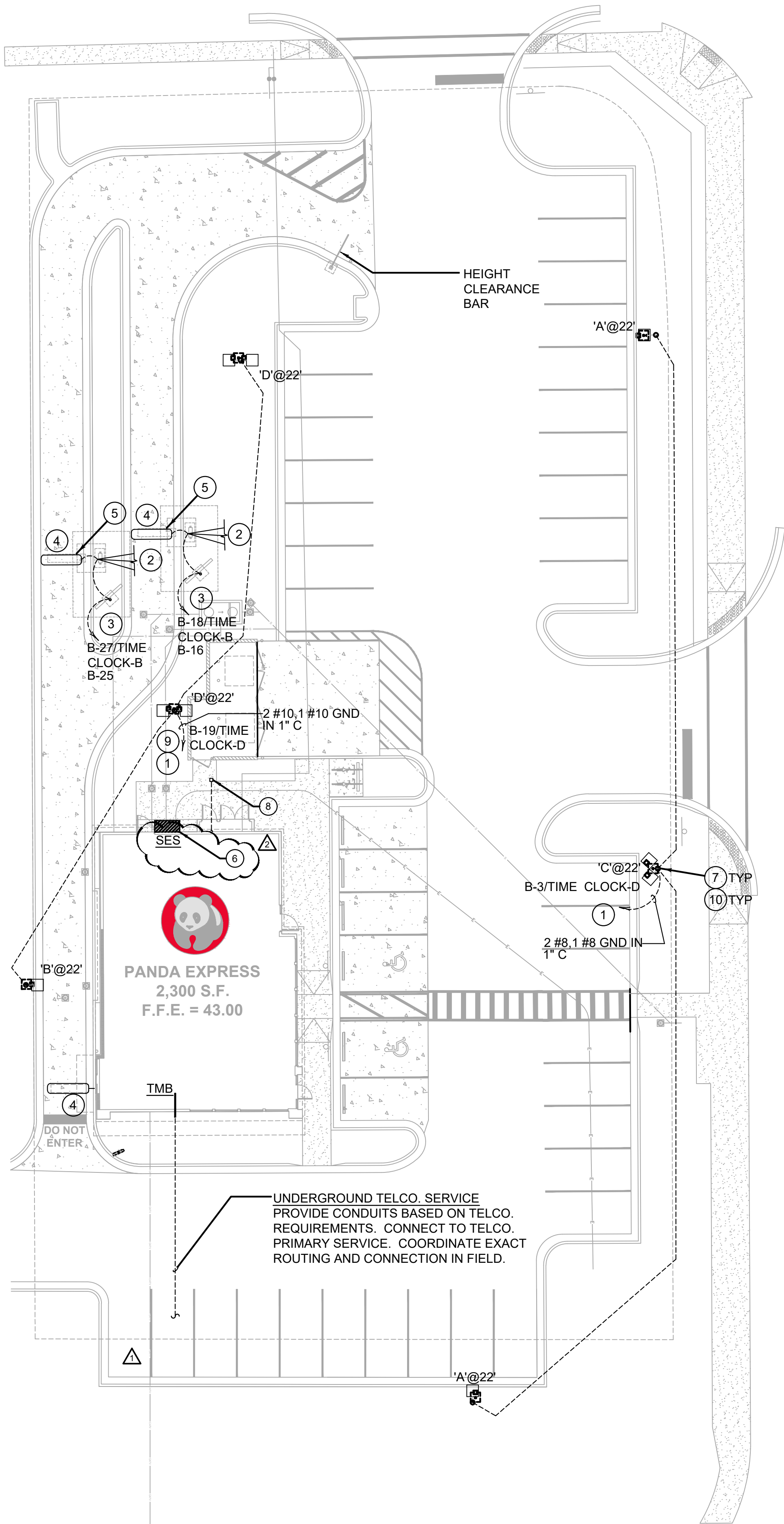
- FEED THROUGH LIGHTING CONTACTOR. REF: 5/E-101.
- STUB UP LOCATION FOR (3) 3/4" CONDUITS & PULL STRINGS, TO ENTER BUILDING & UP TO 6" ABOVE CEILING. REFER TO SHEET 1/E-401.
- STUB-UP LOCATION FOR MENU BOARD. SIGN DISCONNECT PROVIDED BY SIGN CONTRACTOR. COORDINATE PRECISE LOCATION WITH ARCHITECT / OWNER.
- DRIVE-THRU SENSOR LOOP. COORDINATE LOCATION. REFER TO DETAIL 1 / E-401.
- STUB-UP FOR DRIVE-THRU ORDER CONFIRMATION MONITOR. COORDINATE LOCATION WITH ARCHITECT / OWNER.
- REF: 1/E400 FOR SES GROUNDING DETAIL.
- SEE POLE MOUNTING DETAIL, REFER TO 4/E105.
- CABLE PULL BOX; REFERENCE 1/E100. INSTALL MINIMUM 3' FROM SIDEWALK. DO NOT INSTALL IN SIDEWALK CONCRETE.
- CIRCUIT SHALL BE TURNED OFF FROM 12AM TO 6AM (MINIMUM) TO MEET 2015 ALABAMA IECC C405.2.5 (3) EXTERIOR LIGHTING CONTROLS REQUIREMENTS.
- ALL EXTERIOR LIGHTING SHALL BE PROVIDE WITH A CONTROL THAT AUTOMATICALLY TURNS OFF THE LIGHTING AS A FUNCTION OF AVAILABLE DAYLIGHT ACCORDING TO 2015 ALABAMA IECC C405.2.5 (1) EXTERIOR LIGHTING CONTROLS REQUIREMENTS.

SITE PLAN KEYED NOTES 3  
E-105



NOTE: POLE AND LIGHTING FIXTURE MEET 105 M.P.H. WIND SPEEDS.

POLE MOUNTING DETAILS 4  
E-105



SITE & EXTERIOR LIGHTING PLAN 1  
E-105



PANDA EXPRESS, INC.  
1683 Walnut Grove Ave.  
Rosemead, California  
91770  
Telephone: 626.799.9898  
Facsimile: 626.372.8288

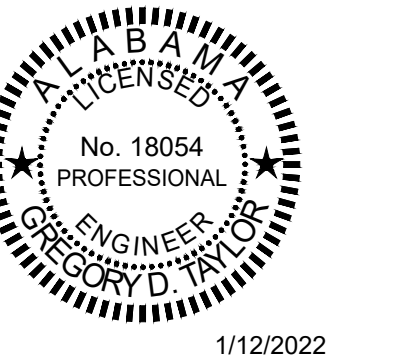
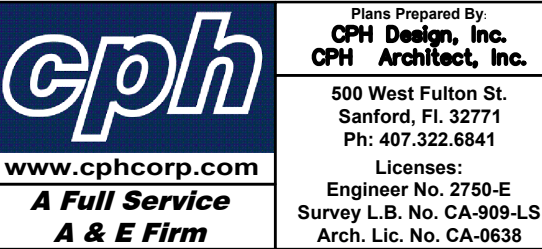
All ideas, designs, arrangement and plans indicated or represented by this drawing are the property of Panda Express Inc. and were created for use on this specific project. None of these ideas, designs, arrangements or plans may be used by or disclosed to any person, firm, or corporation without the written permission of Panda Express Inc.

REVISIONS:		
1	OWNER REVISION	11-08-21
2	OWNER REVISION	01-07-22

ISSUE DATE:		
1	CHECK SET	07-19-21
2	PERMIT SET	09-17-21
3	BID SET	11-08-21
4	BID SET REISSUE	01-14-22

DRAWN BY: KTF

PANDA PROJECT #: S8-22-D8433  
ARCH PROJECT #: P7363



PANDA EXPRESS  
TRUE WARM & WELCOME 2300  
101 STADIUM WAY  
MADISON, AL 35758

E-105  
SITE & EXTERIOR LIGHTING PLAN

TRUE WARM & WELCOME 2300 R5



STANDARD SITE LIGHTING FIXTURE, LITHONIA DSX2 @ 22'-0"  
POLE HEIGHT: 20'-0"  
POLE BASE: 2'-0"

THE TARGET VALUES FOR THE SITE LIGHTING ARE AS FOLLOWS:

PAVED AREAS:	PROPERTY LINE:	TRASH ENCLOSURE:
AVG: 4.0 fc	AVG: 2.0 fc	AVG: 3.0 fc
MAX: 10.0 fc	MAX: 4.0 fc	
MIN: 1.0 fc	MIN: 0.5 fc	SERVICE DOOR:
AVG / MIN: 5.00	AVG / MIN: 10.00	AVG: 3.0 fc
MAX / MIN: 10.00	MAX / MIN: 20.00	

THE NEW DESIGN IS DARK SKY COMPLIANT, LED BASED, DUAL DRIVER (TO DROP LIGHTING AND ENERGY TO HALF AFTER HOURS), HIGH CRI (MINIMUM 65), AND COMFORTABLE COLOR TEMPERATURE (4,000K TO 5,000K). A MINIMUM LIGHT LOSS FACTOR (LLF) OF .8 SHALL BE USED FOR ALL CALCULATIONS.

THESE CRITERIA ARE GENERIC AND DO NOT TAKE INTO ACCOUNT LOCAL LIGHTING ORDINANCES, CODES, OR SITE STIPULATIONS.

NOTE:

VILLA LIGHTING IS RESPONSIBLE TO ENSURE SITE LIGHT DESIGN & PHOTOMETRIC PLAN MEETS PANDA'S SITE LIGHTING DESIGN CRITERIA. IF THERE ARE SITE SPECIFIC ORDINANCES AND CODE REQUIREMENTS, SEND ALL DESIGN CRITERIA TO VILLA AND NOTIFY PANDA DESIGN MANAGER AND PROJECT MANAGER. REQUEST SITE LIGHT DESIGN & SITE PHOTOMETRIC PLAN THRU VILLA LIGHTING SUPPLY INC. NOTE, THERE IS A LEAD TIME OF 3 BUSINESS DAYS FOR PLAN TO GET RETURN TO ENGINEER OR ARCHITECT. VILLA LIGHTING SUPPLY INC.

Statistics						
Description	Symbol	Avg	Max	Min	Max/Min	Avg/Min
CALC SUMMARY- PROPERTY LINE	+	0.8 fc	3.0 fc	0.0 fc	N/A	N/A
TRASH ENCLOSURE	+	4.1 fc	4.6 fc	3.5 fc	1.3:1	1.2:1
CALC SUMMARY- PAVED SURFACE	+	2.6 fc	7.3 fc	0.1 fc	73.0:1	26.0:1

Note  
1. MOUNTING HEIGHT OF 22' (20'POLE)  
2. CALCULATIONS TAKEN AT GROUND LEVEL  
3.CONTACT VILLA LIGHTING- RYAN ZINSELMEIER-  
RYAN.ZINSELMEIER@VILLALIGHTING.COM- 314-531-2600

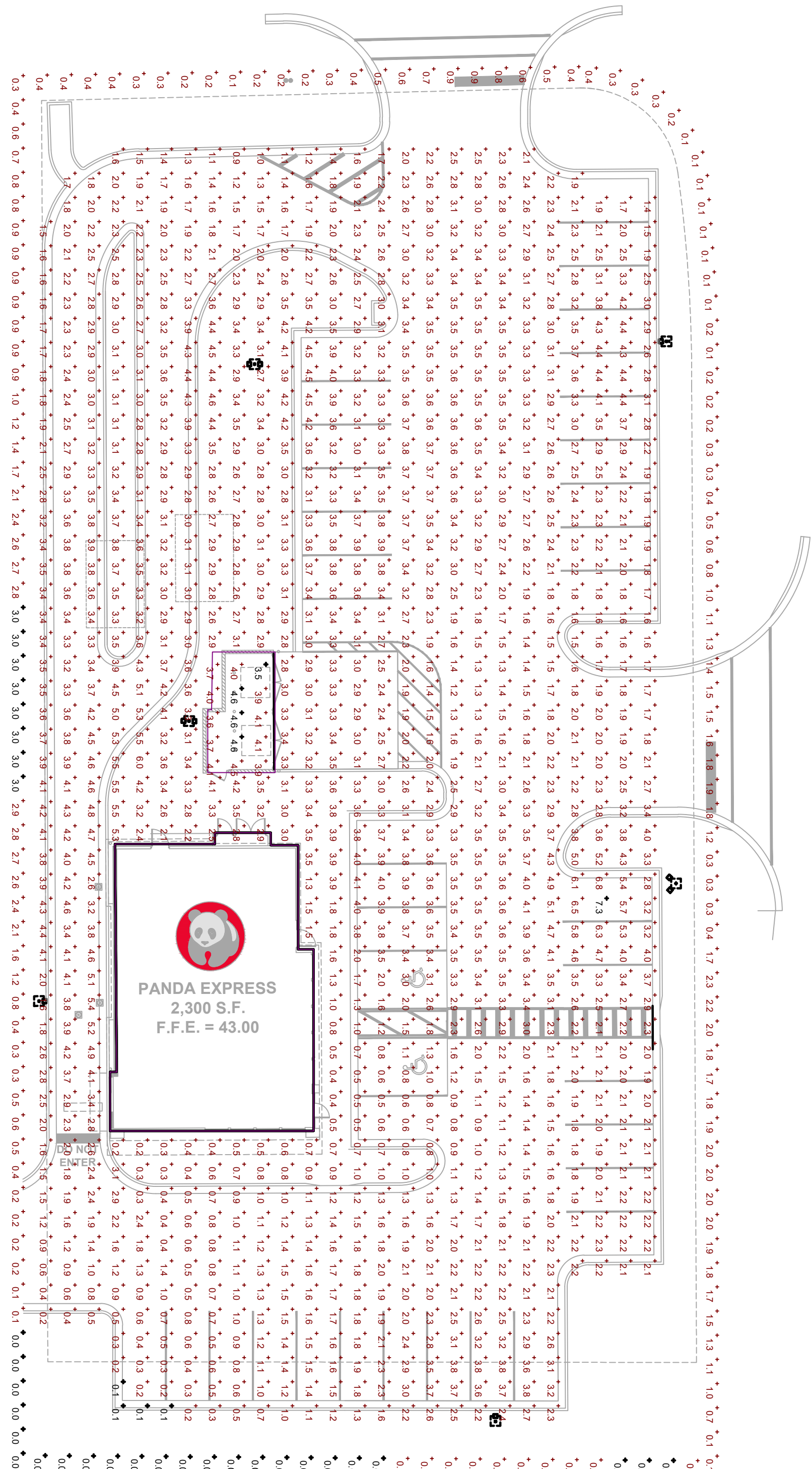
Schedule										
Symbol	Label	Quantity	Catalog Number	Description	Filename	Lumens Per Lamp	Lumen Multiple	Light Loss Factor	Wattage	Efficiency
	A	2	SLM-LED-18L-SIL-FT-40-70CRI-IL	CONTACT RYAN ZINSELMEIER-314-531-2600	SLM-LED-18L-SIL-FT-40-70CRI-IL.ies	12046	1	1	148.5	100%
	B	1	SLM-LED-18L-SIL-3-40-70CRI-IL	CONTACT RYAN ZINSELMEIER-314-531-2600	SLM-LED-18L-SIL-3-40-70CRI-IL.ies	13767	1	1	148.5	100%
	D	2	SLM-LED-18L-SIL-SIL-FT-40-70CRI-IL	CONTACT RYAN ZINSELMEIER-314-531-2600	SLM-LED-18L-SIL-SIL-FT-40-70CRI-IL.ies	12046	1	1	297	100%
	C	1	SLM-LED-18L-SIL-FT-40-70CRI-IL	CONTACT RYAN ZINSELMEIER-314-531-2600	SLM-LED-18L-SIL-FT-40-70CRI-IL.ies	12046	1	1	297	100%

SITE LIGHTING FIXTURE SCHEDULE

2

NO SCALE

E-106



SITE PHOTOMETRIC PLAN

1

N.T.S.

E-106



PANDA EXPRESS, INC.  
1683 Walnut Grove Ave.  
Rosemead, California  
91770

Telephone: 626.799.9898  
Facsimile: 626.372.8288

All ideas, designs, arrangement and plans indicated or represented by this drawing are the property of Panda Express Inc. and were created for use on this specific project. None of these ideas, designs, arrangements or plans may be used by or disclosed to any person, firm, or corporation without the written permission of Panda Express Inc.

REVISIONS:

OWNER REVISION 11-08-21

ISSUE DATE:

1	CHECK SET	07-19-21
2	PERMIT SET	09-17-21
3	BID SET	11-08-21
4	BID SET REISSUE	01-14-22

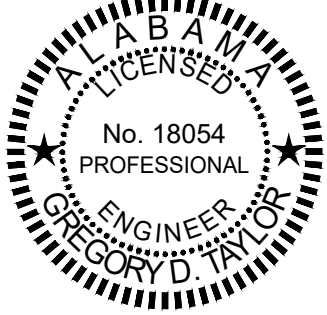
DRAWN BY: KTF

PANDA PROJECT #: S8-22-D8433

ARCH PROJECT #: P7363

www.cphcorp.com  
A Full Service  
A & E Firm

Plans Prepared By  
**CPI Design, Inc.**  
**CPH Architect, Inc.**  
500 West Fulton St.  
Sanford, FL 32771  
Ph: 407.322.6841  
Licenses:  
Engineer No. 2756-E  
Survey L.B. No. CA-909-LIS  
Arch. Lic. No. CA-0638



1/14/2022

PANDA EXPRESS

TRUE WARM & WELCOME 2300  
101 STADIUM WAY  
MADISON, AL 35758

E-106

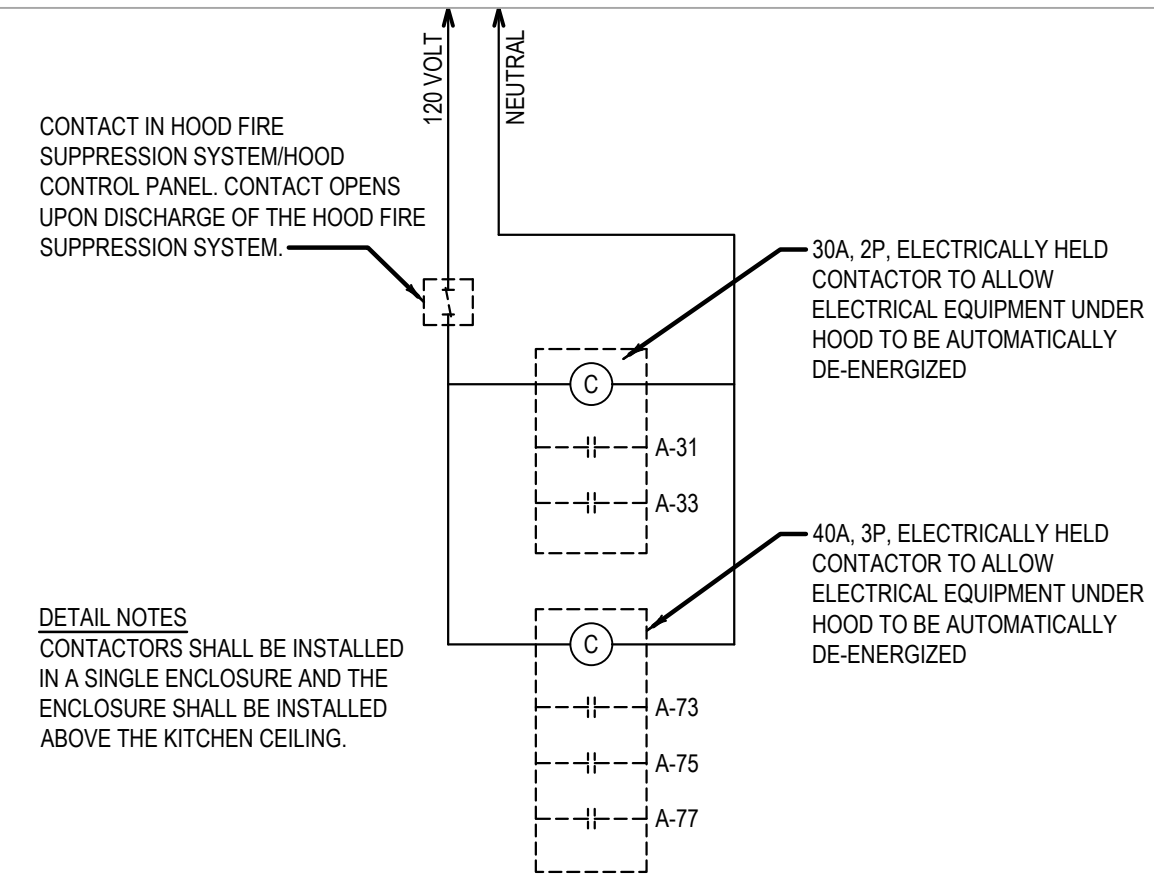
SITE PHOTOMETRIC PLAN

TRUE WARM & WELCOME 2300 R5









**FIRE SUPPRESSION SHUTDOWN** 13

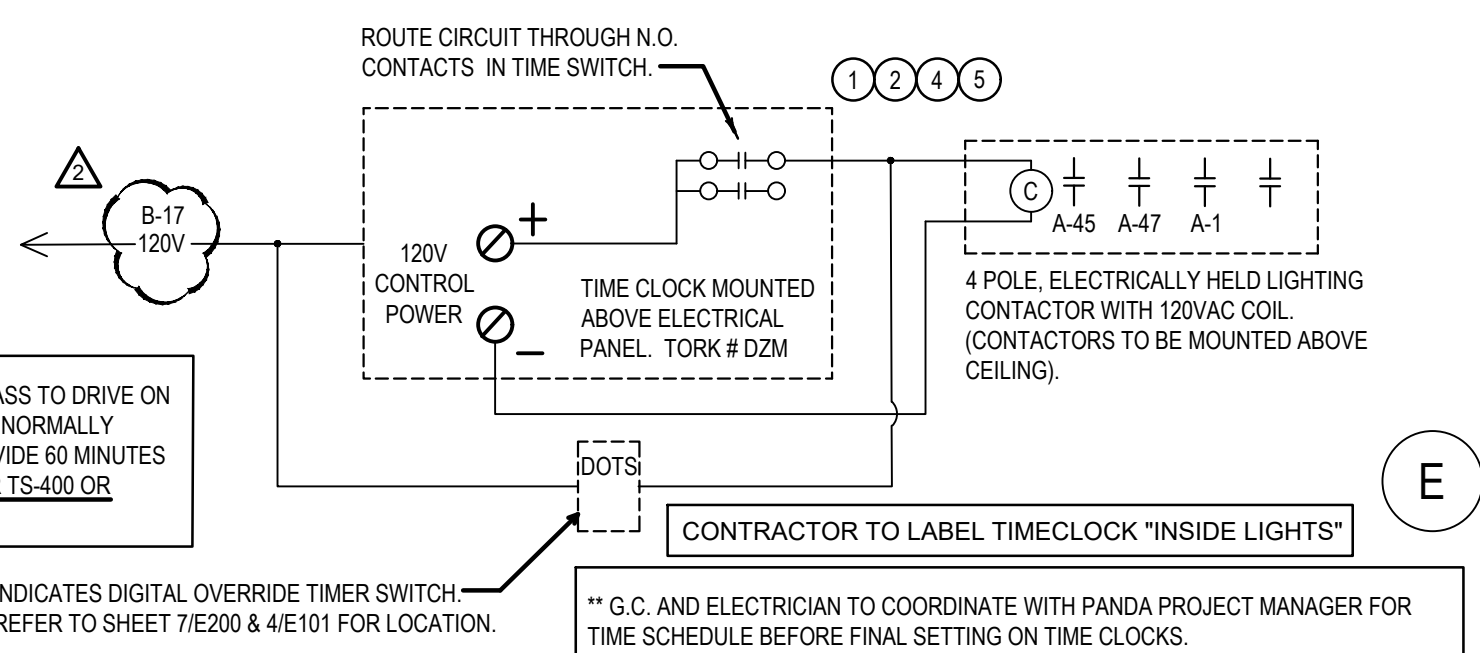
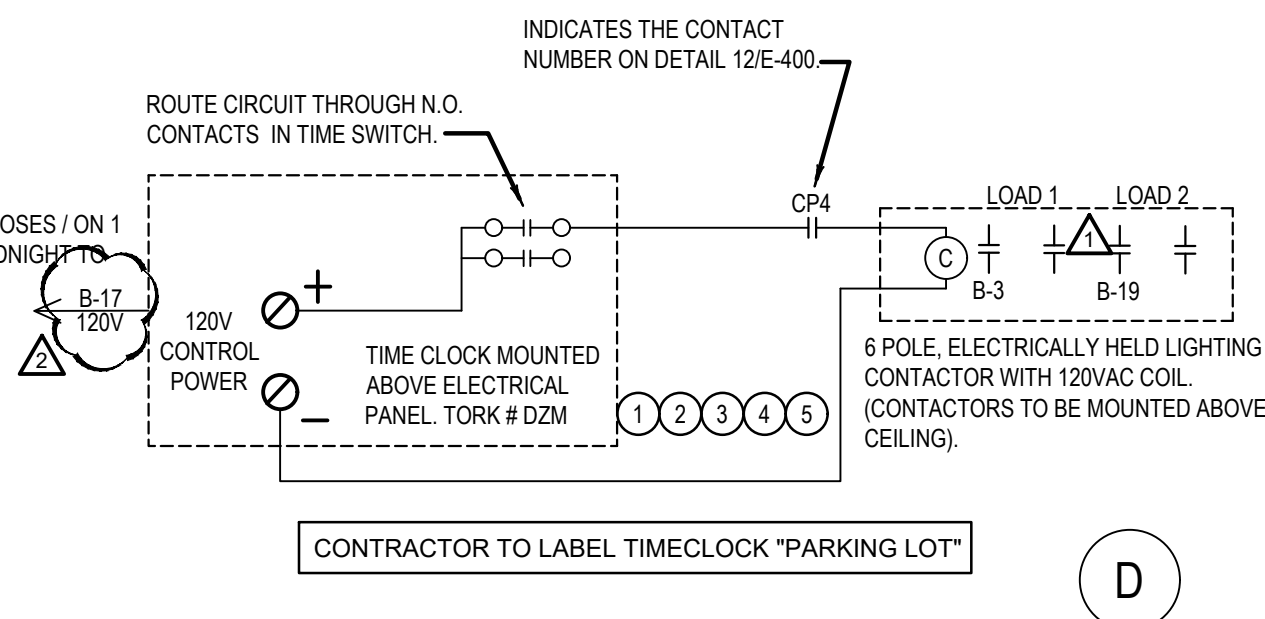
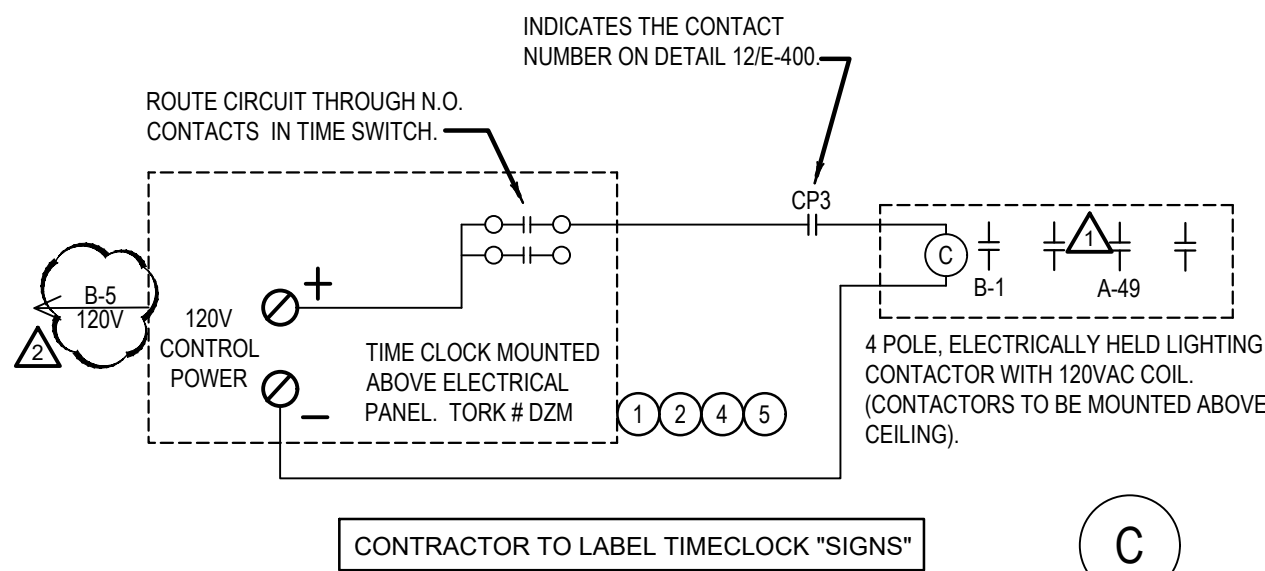
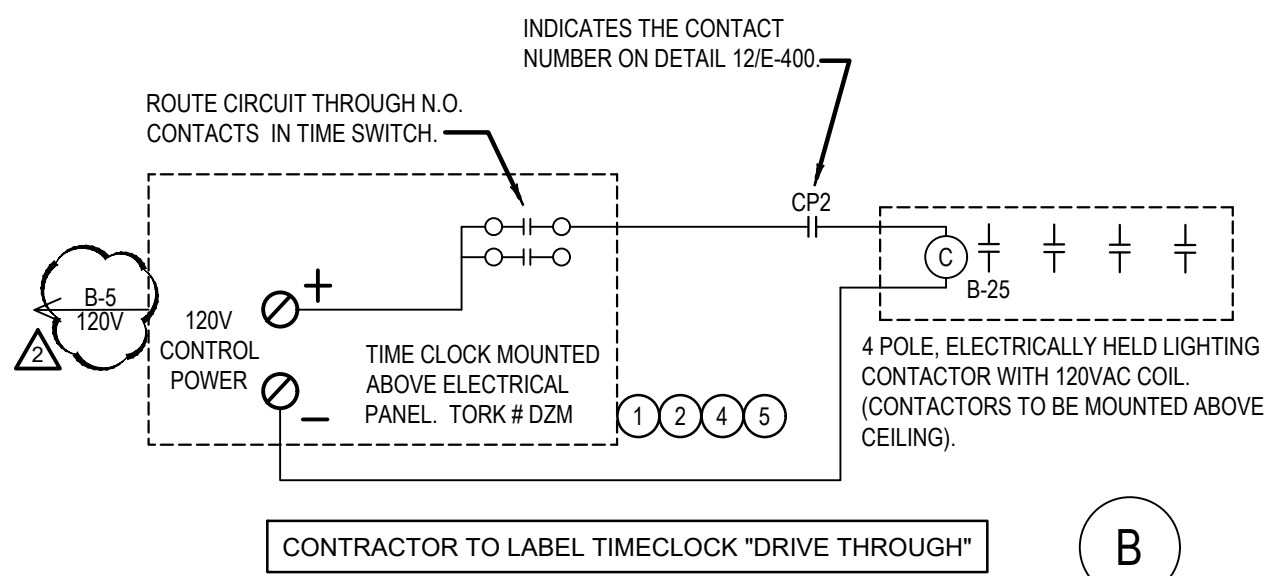
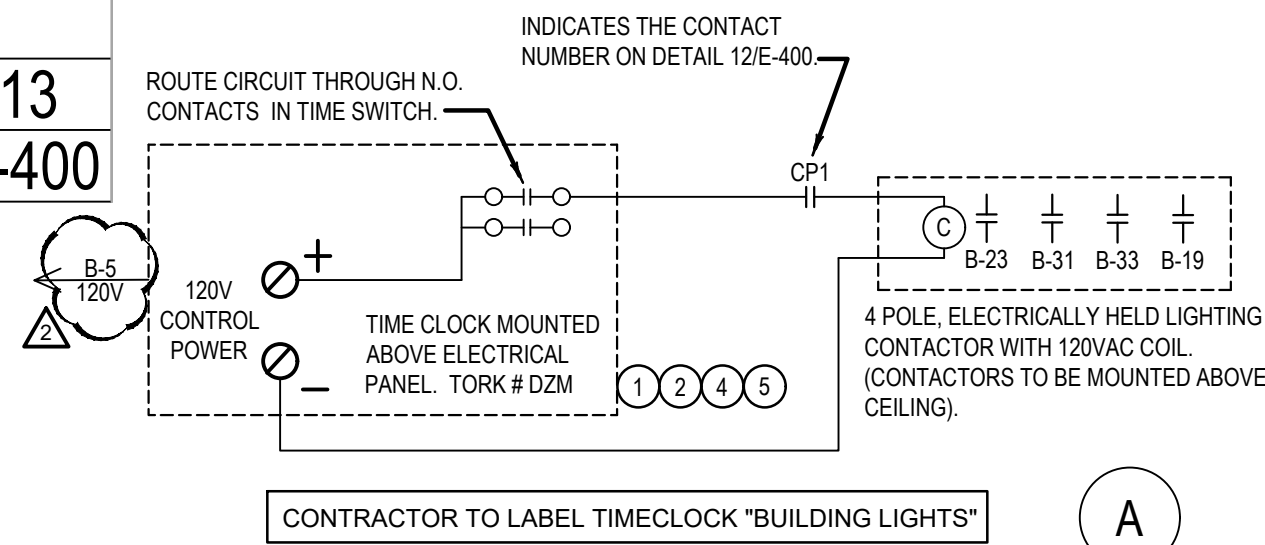
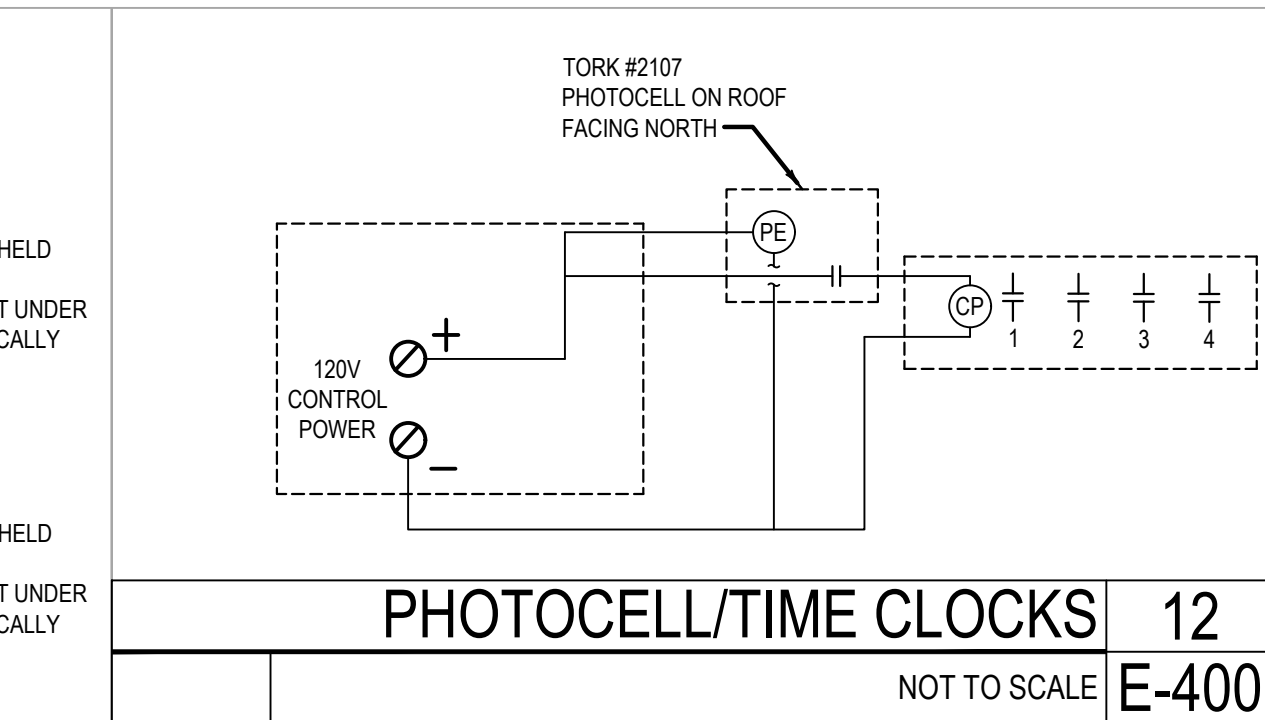
NOT TO SCALE E-400

- KEY NOTES:
- 1 PROVIDE AN OVERRIDE SWITCH TO OVERRIDE THE TIME CLOCK DURING AFTER-HOURS WORK TO TURN ON THE LIGHTS NOT MORE THAN 2 HOURS ACCORDING WITH ENERGY CODE 2015 ALABAMA IECC C405.2.2.1.
  - 2 TIME CLOCK SHALL COMPLIED WITH 2015 ALABAMA IECC CODE C405.2.2.1:
    - MINIMUM OF 7 DAY CLOCK
    - CAPABLE OF BEING SET FOR SEVEN "7" DIFFERENT DAY TYPES PER WEEK
    - HOLIDAY "SHUTOFF"
    - PROGRAM BACK UP CAPABILITY AT LEAST 10H
    - OVERRIDE SWITCH
  - 3 ELECTRICAL CONTRACTOR TO PROVIDE TWO ZONE TIMECLOCK MODEL NUMBER: TORK #DZM200BP OR EQUAL
  - 4 FOR SEQUENCE OF OPERATION SEE SHEET E-400 / 14.
  - 5 CONTRACTOR TO PROVIDE EVIDENCE THAT THE LIGHTING CONTROL SYSTEM IS WORKING PROPERLY ACCORDING TO 2015 ALABAMA IECC C408.3 LIGHTING SYSTEM FUNCTIONAL TESTING (TYPICAL)
- NOTE:  
FOR MORE DETAIL REFER TO 2015 ALABAMA IECC.

SEQUENCE OF OPERATION:

LOAD 1: TO TURN ON AT DUSK / OFF AT DAWN

LOAD 2: TO TURN OFF 1 HOUR AFTER LAST BUSINESS CLOSING / ON 1 HOUR PRIOR TO OPEN BUT NOT LATER THAN MIDNIGHT 6AM. PER 2015 ALABAMA IECC C405.2.5.



**TIME CLOCKS** 11

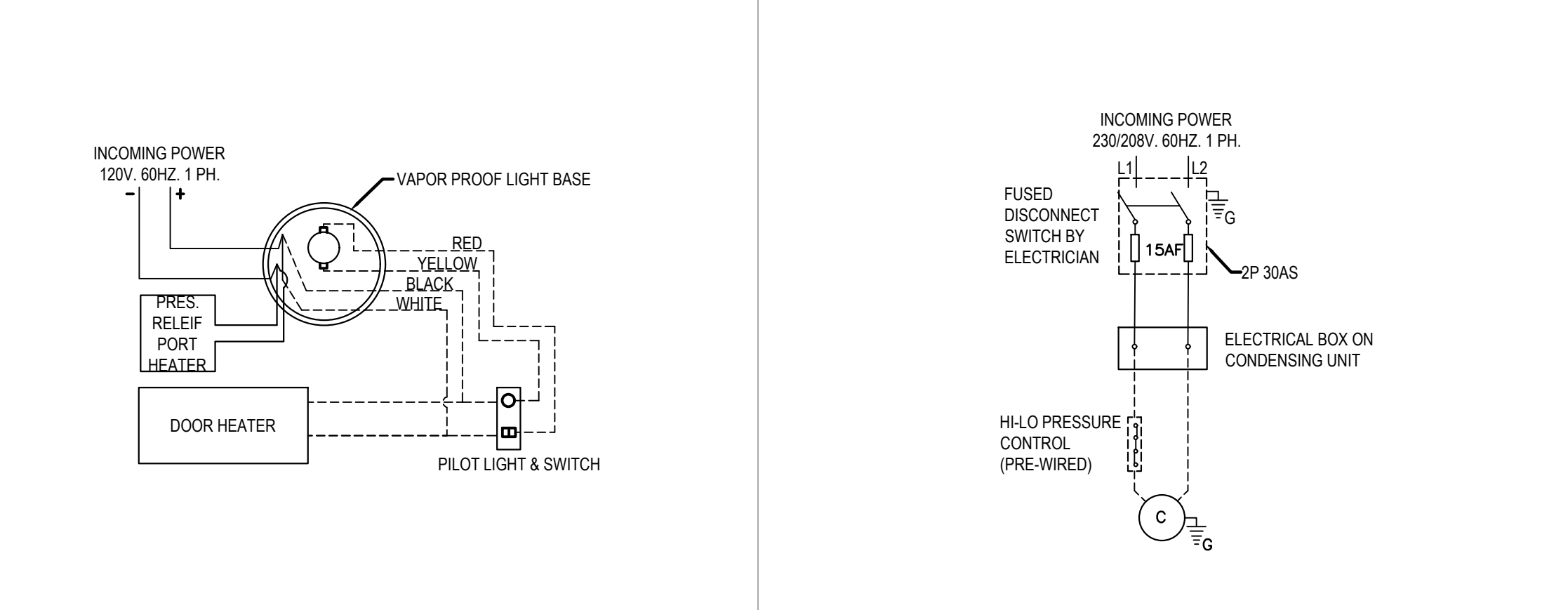
NOT TO SCALE E-400

SEQUENCE OF OPERATION		
TIME CLOCK	DESCRIPTION	TIME & STATUS
A	BUILDING LIGHTS	*ON 5PM & OFF AT 10:30PM**
B	DRIVE THROUGH	ON 5PM & OFF AT 10:30PM**
C	SIGNS	ON 5PM & OFF AT 10:30PM**
D	PARKING LOT	* REDUCE LIGHTING POWER NOT LESS THAN 30 PERCENT FROM NOT LATER THAN MIDNIGHT TO 6AM, FROM ONE HOUR AFTER BUSINESS CLOSING TO ONE HOUR BEFORE BUSINESS OPEN.
E	INSIDE LIGHTS	ON AT 9AM & OFF AT 11:30PM**

NOTES:  
\* ON AT 40 LUX OFF DURING LIGHT INPUT RECEIVED (PHOTOCELL).  
\*\* PRIOR TO PROGRAMING THE TIME CLOCK COORDINATE THE TIME WITH THE OWNER.

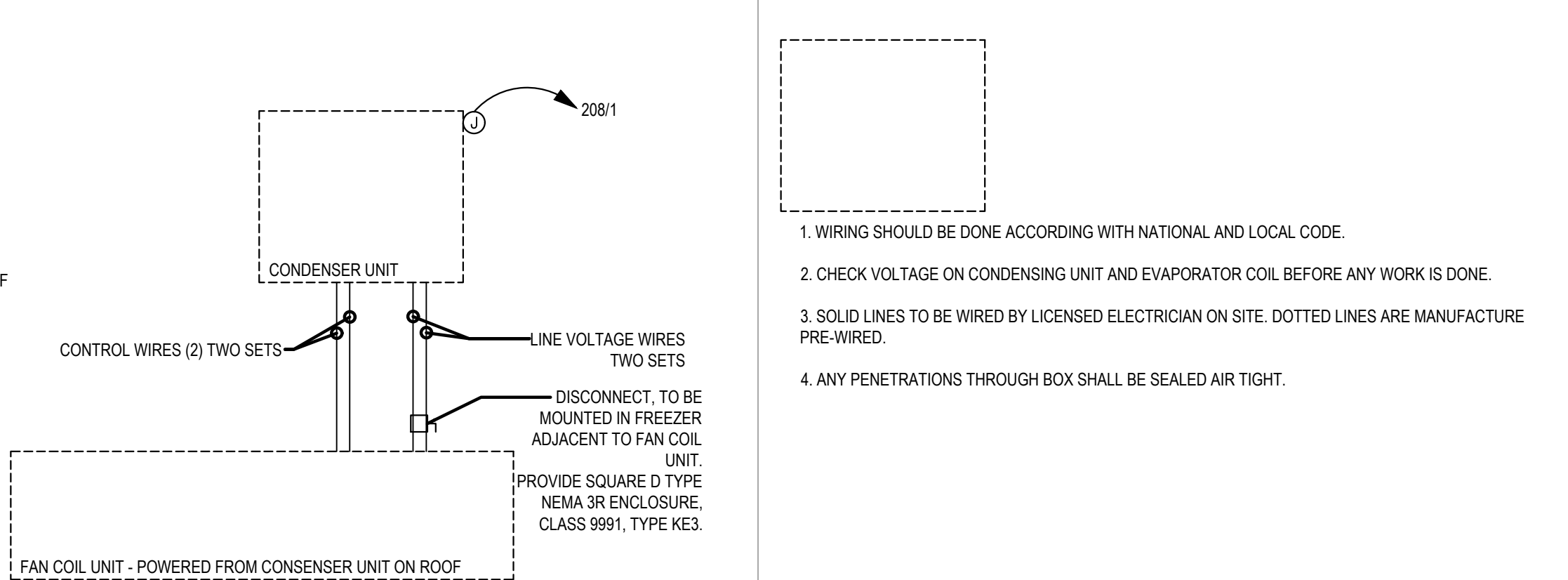
**SEQUENCE OF OPERATION** 14

NOT TO SCALE E-400



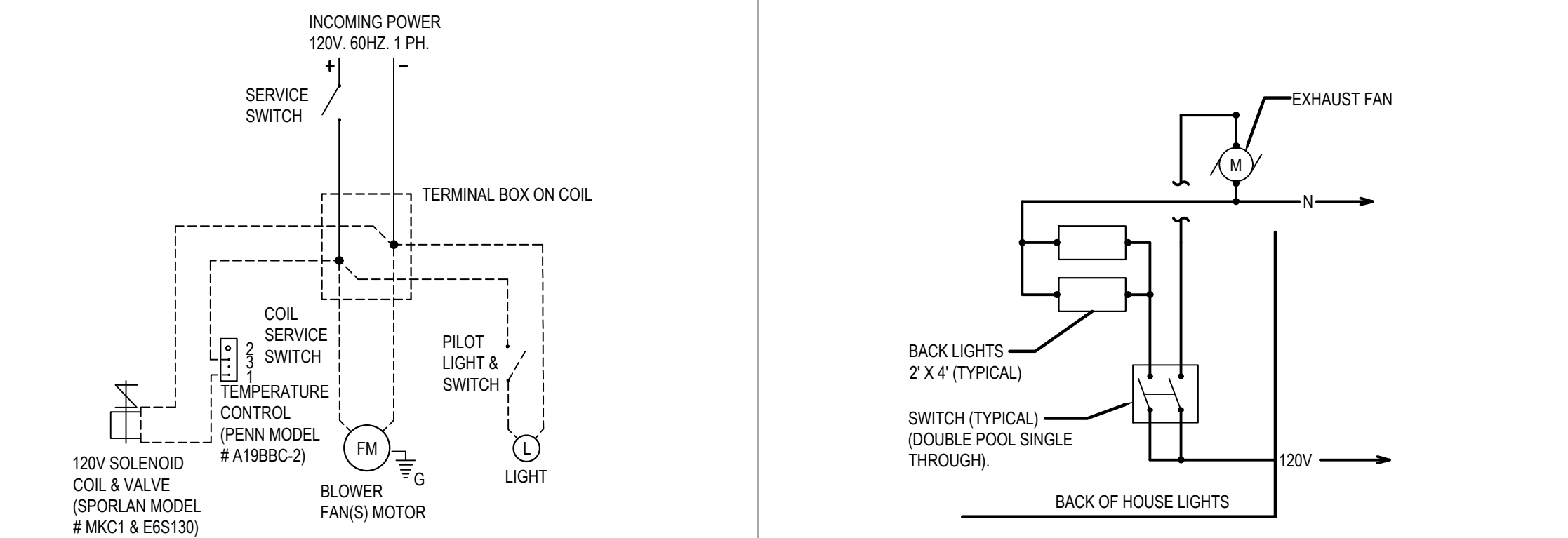
**FREEZER LTG & DOOR HTR WIRING DIAGRAM** 10

NOT TO SCALE E-400



**FREEZER EVAPORATOR COIL** 9

NOT TO SCALE E-400

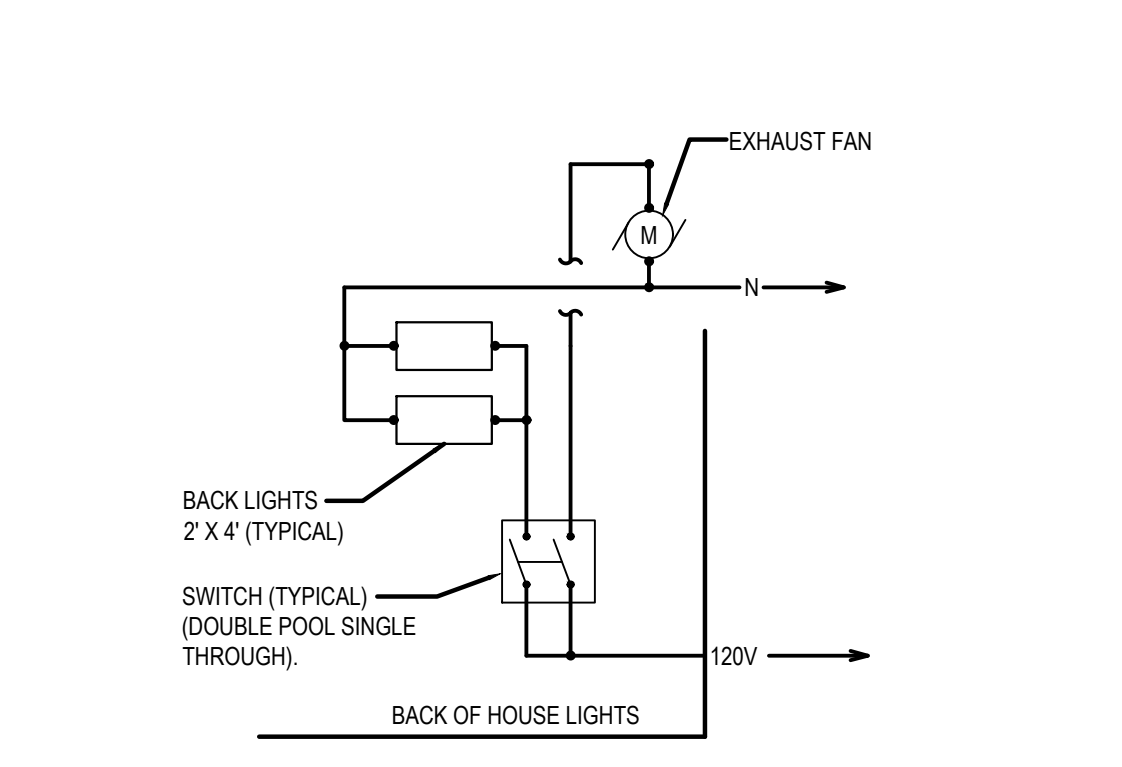


**COOLER EVAPORATOR COIL** 8

NOT TO SCALE E-400

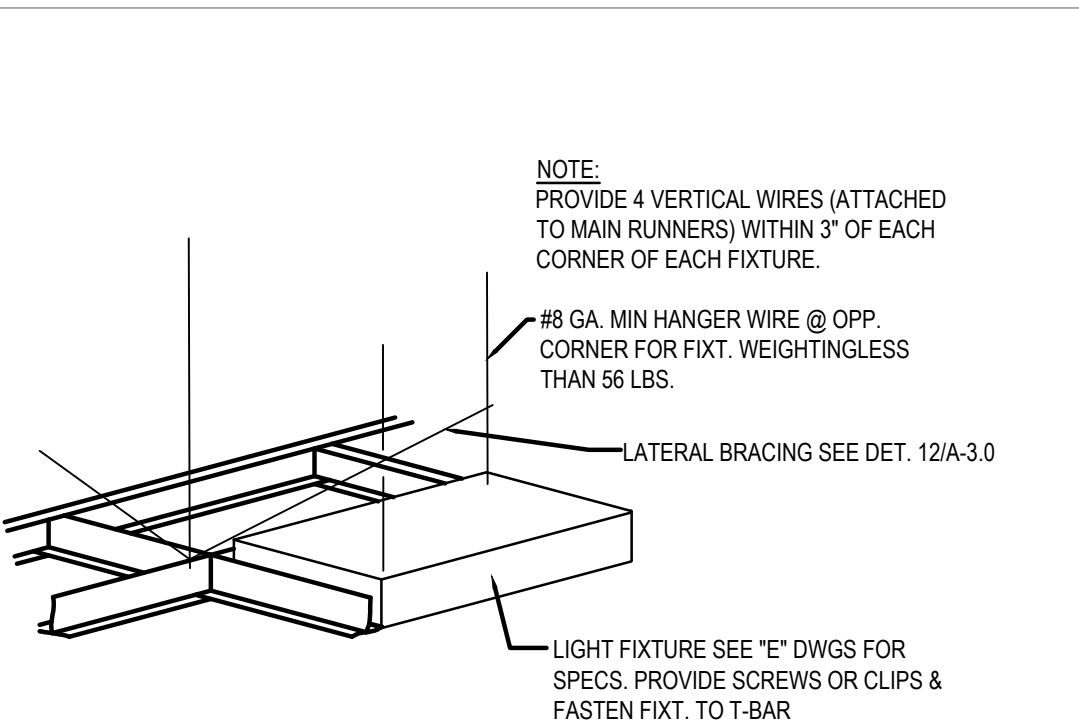
**WIC / WIF WIRING DIAGRAM NOTES** 6

NOT TO SCALE E-400



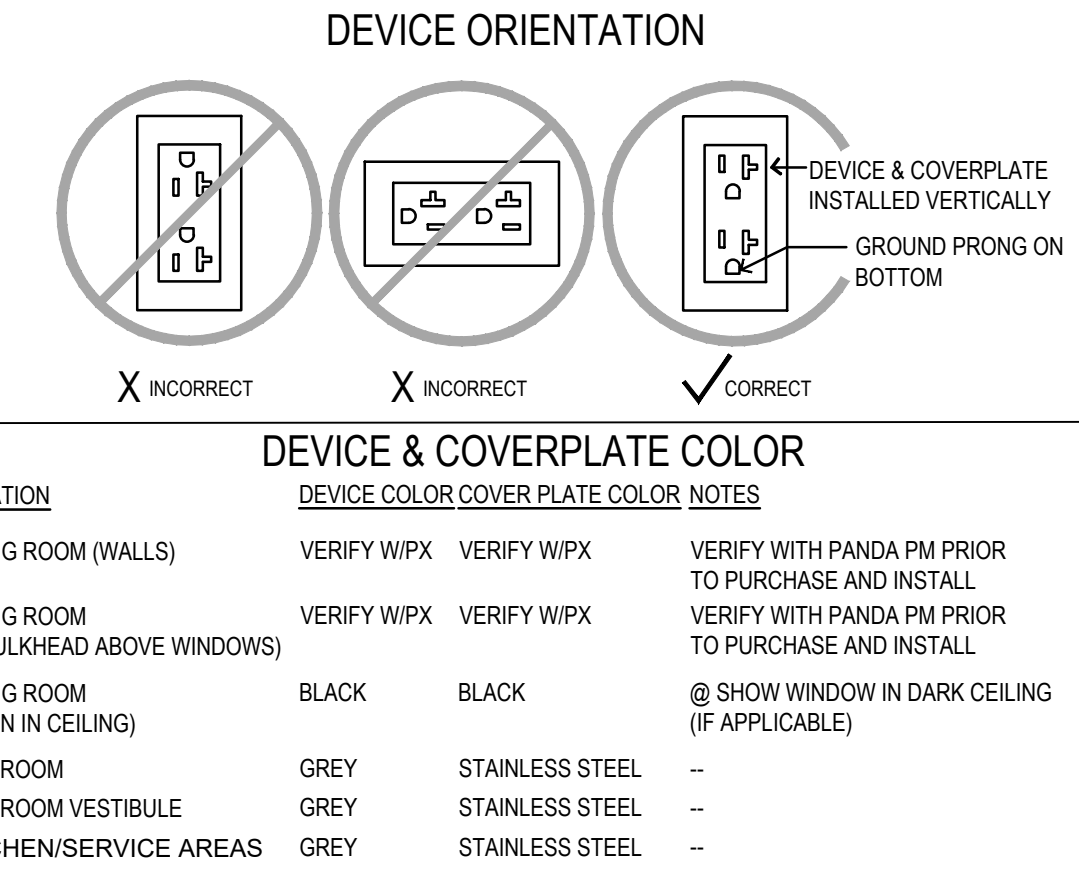
**EXHAUST FAN CONTROL DIAGRAM** 5

NOT TO SCALE E-400



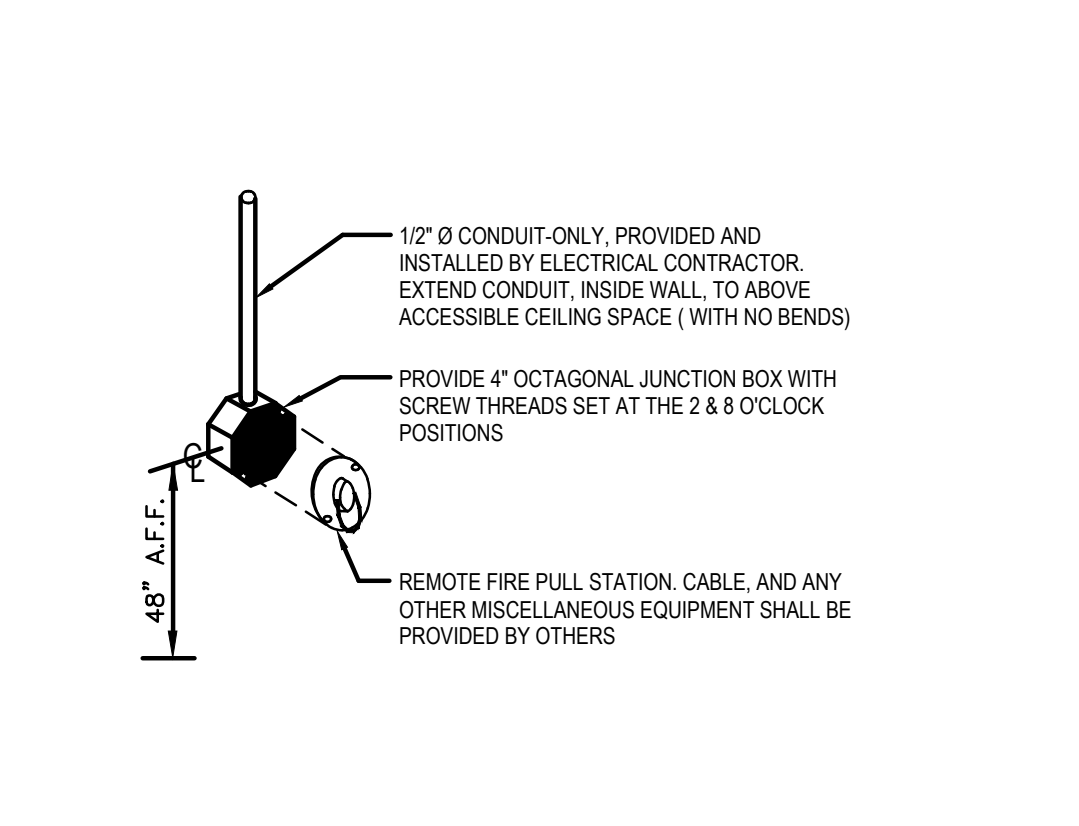
**LIGHT FIXTURE DETAIL** 4

NOT TO SCALE E-400



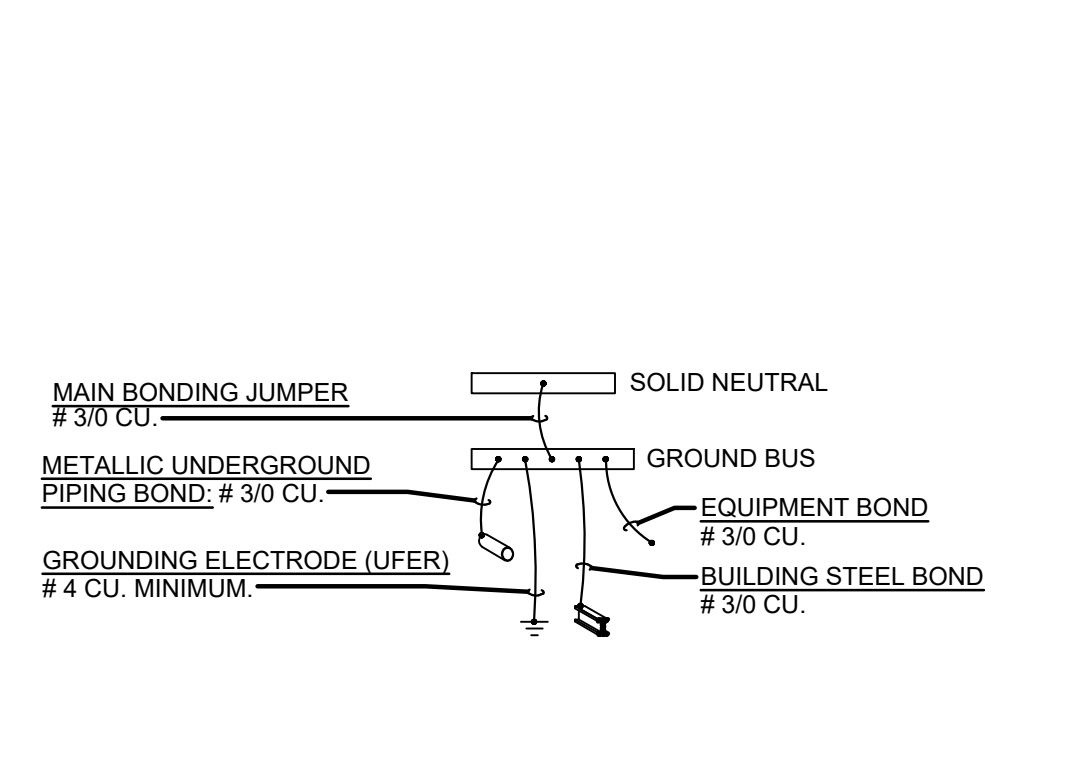
**DEVICE / RECEPTACLE SCHEDULE** 3

NOT TO SCALE E-400



**ANSUL PULL STATION DETAIL** 2

NOT TO SCALE E-400



**'MDP' GROUNDING DETAIL** 1

NOT TO SCALE E-400



PANDA EXPRESS, INC.  
1683 Walnut Grove Ave.  
Rosemead, California  
91770  
Telephone: 626.799.9898  
Facsimile: 626.372.8288

All ideas, designs, arrangement and plans indicated or represented by this drawing are the property of Panda Express Inc. and were created for use on this specific project. None of these ideas, designs, arrangements or plans may be used by or disclosed to any person, firm, or corporation without the written permission of Panda Express Inc.

REVISIONS:

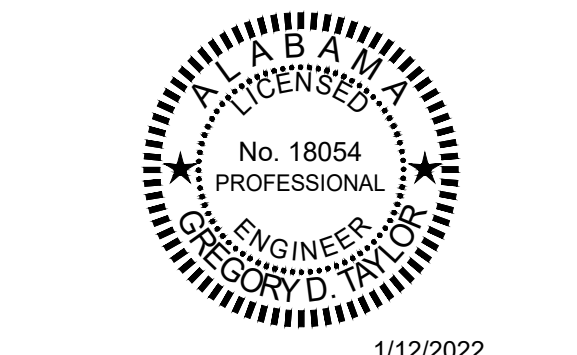
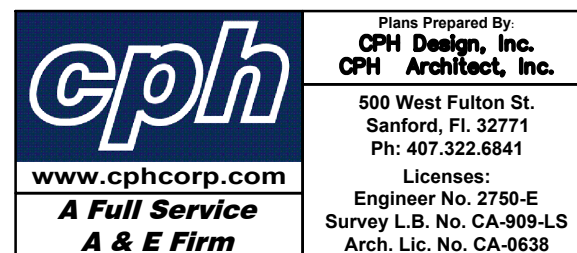
OWNER REVISION	11-08-21
OWNER REVISION	01-07-22

ISSUE DATE:

1	CHECK SET	07-19-21
2	PERMIT SET	09-17-21
3	BID SET	11-08-21
4	BID SET REISSUE	01-14-22

DRAWN BY: KTF

PANDA PROJECT #: S8-22-D8433  
ARCH PROJECT #: P7363



PANDA EXPRESS  
TRUE WARM & WELCOME 2300  
101 STADIUM WAY  
MADISON, AL 35758

E-400

ELECTRICAL DETAILS, DIAGRAMS

TRUE WARM & WELCOME 2300 R5

This item has been electronically signed and sealed by Gregory D. Taylor, P.E. on January 12, 2022 using a digital signature. Printed copies of this document are not considered signed and sealed and the signature must be verified on any electronic copies.





All ideas, designs, arrangement and plans indicated or represented by this drawing are the property of Panda Express Inc. and were created for use on this specific project. None of these ideas, designs, arrangements or plans may be used by or disclosed to any person, firm, or corporation without the written permission of Panda Express Inc.

## REVISIONS

[illegible]

ISSUE DATE

1	CHECK SET	07-19-
2	PERMIT SET	09-17-
3	BID SET	11-08-
4	BID SET REISSUE	01-14-

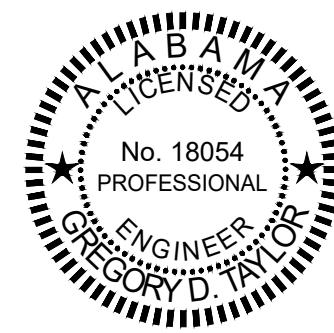
NOT TO SCALE | F-40

DRAWN BY: KTF

PANDA PROJECT #: S8-22-D8433

ARCH PROJECT #: P7363

	Plans Prepared By: <b>CPH Design, Inc.</b> <b>CPH Architect, Inc.</b>
	500 West Fulton St. Sanford, FL 32771 Ph: 407.322.6841  Licenses: Engineer No. 2750-E Survey L.B. No. CA-909-L Arch Lic. No. CA-063R
<a href="http://www.cphcorp.com">www.cphcorp.com</a>	
<b>A Full Service</b> <b>A &amp; E Firm</b>	

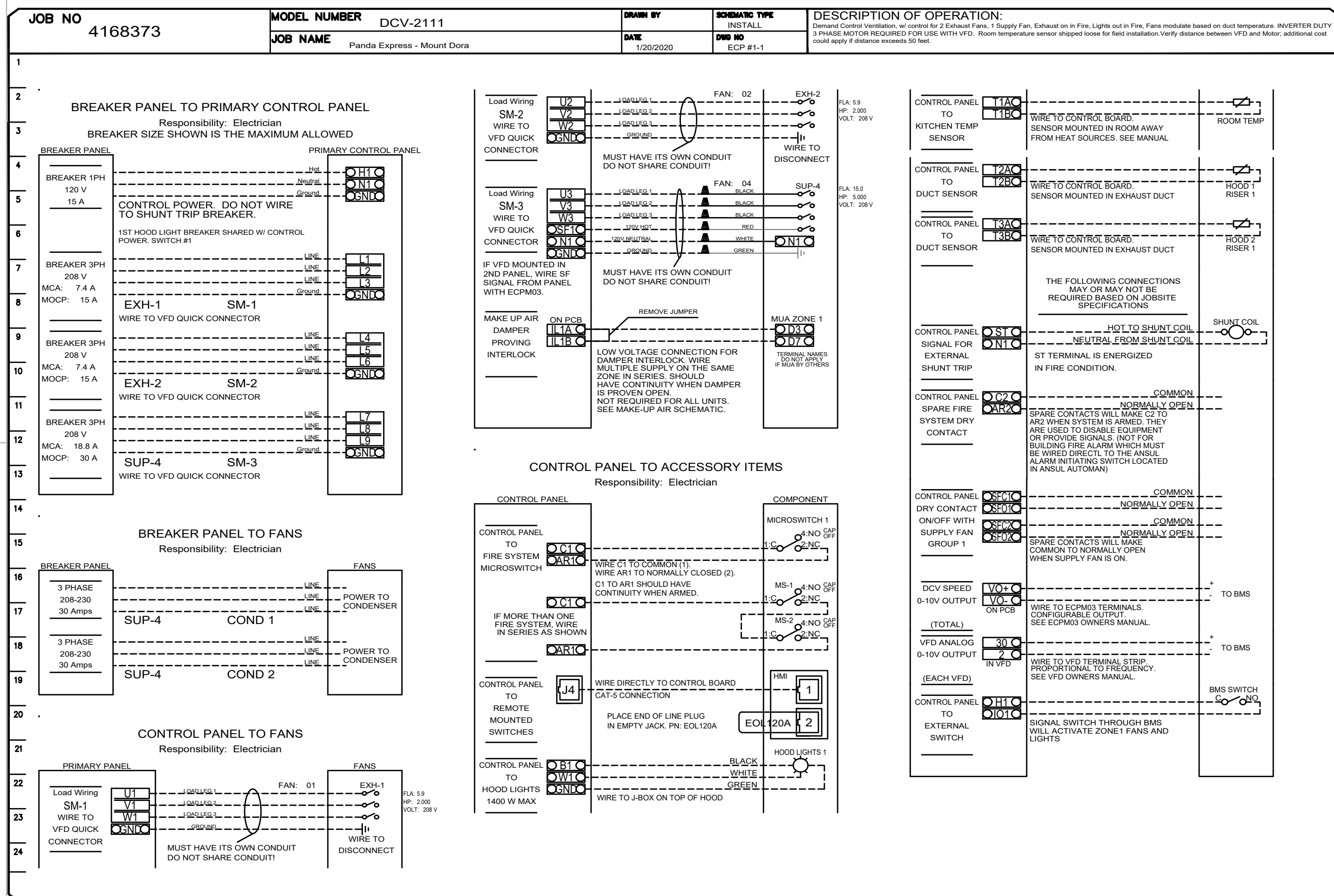
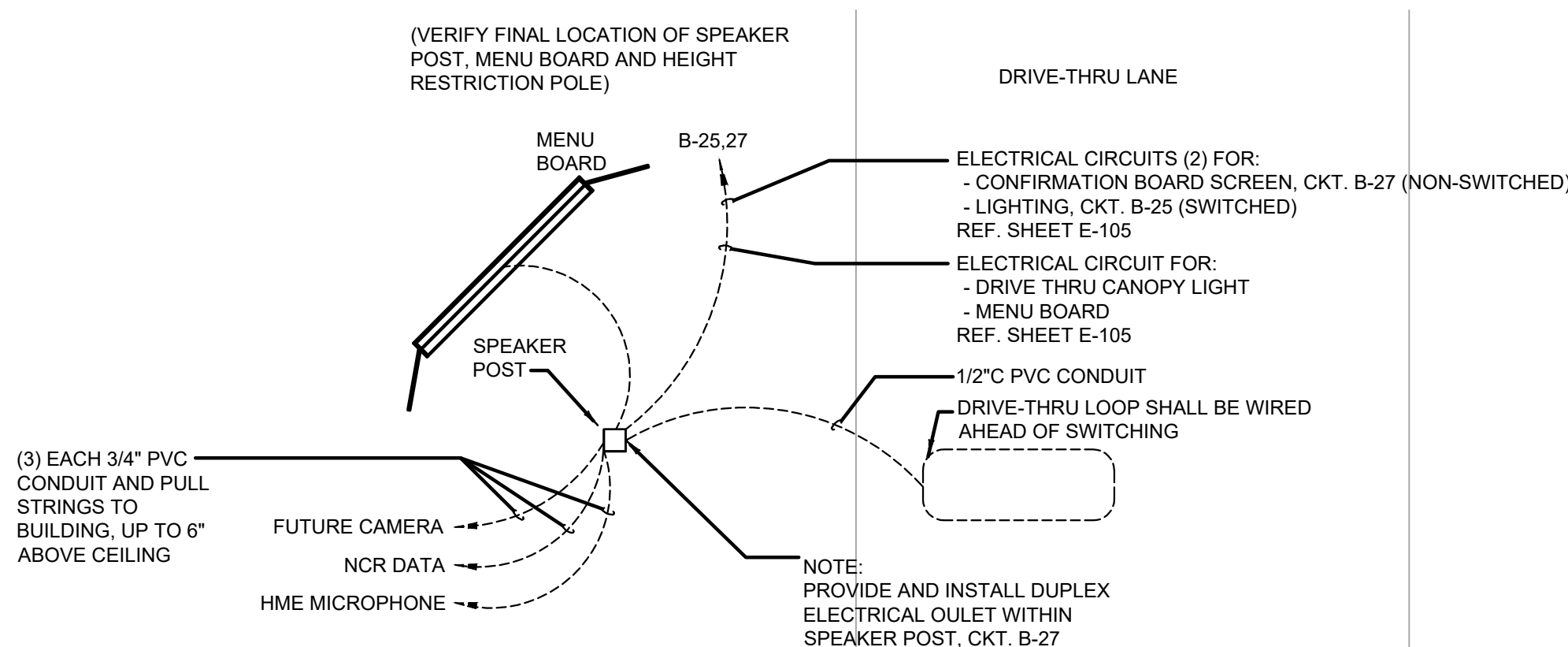
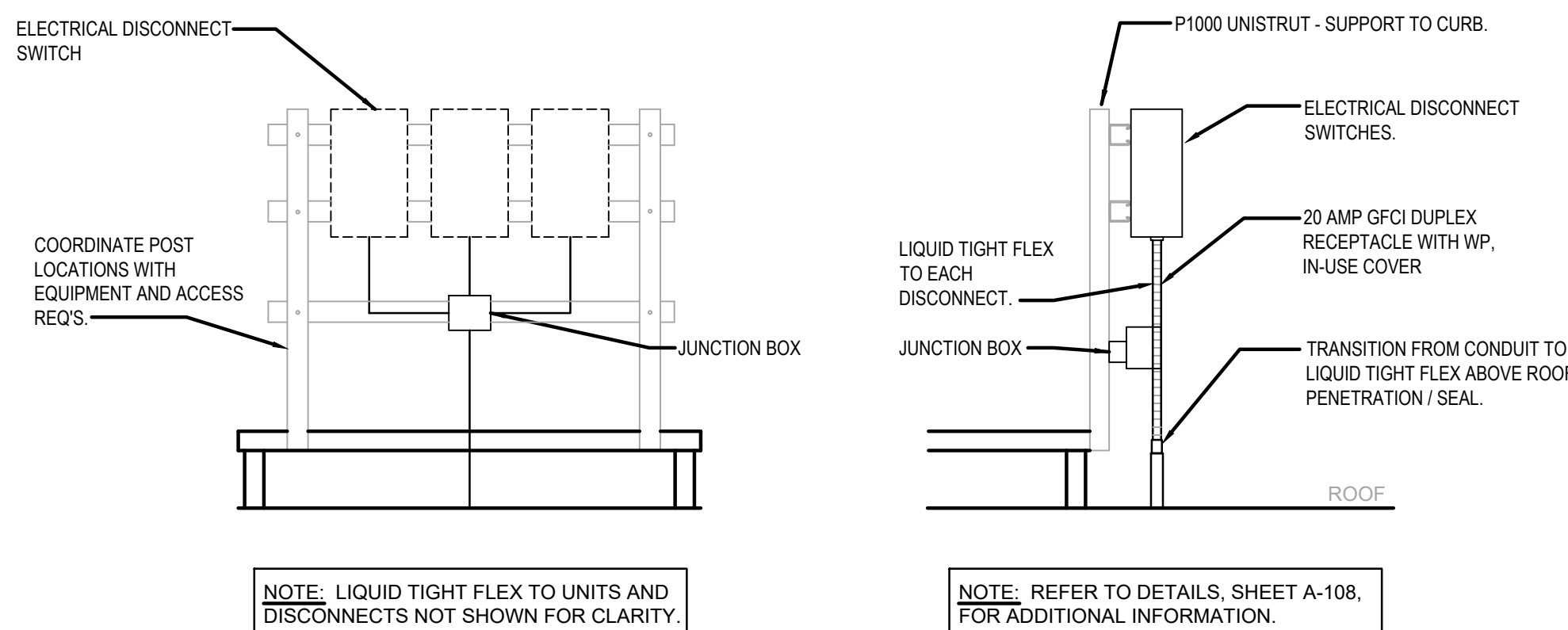


1/12/202

TRUE WARM & WELCOME 2300  
101 STADIUM WAY  
MADISON, AL 35758

ELECTRICAL DETAILS, DIAGRAMS

TRUE WARM &amp; WELCOME 2300 R5



NOT TO SCALE F-40

F-40

## F-4

F-4



PNL A

MOUNTING: FLUSH

LOCATION: ELEC. CABINET

TYPE: BOLT ON W/ GROUND BUS

NEMA RATING: 1

PANELBOARD

(NEW)

208Y/120V, 3PH, 4W

400A M.L.O.

SERIES RATED 65/10K A.I.C.

GROUND BUS

ISOLATED

INTERIOR PANELBOARDS SHALL BE RECESSED WITH FLANGED/REMOVABLE SCREW-ON COVER. SURFACE MOUNTED PANELBOARDS OR HINGED/FLUSH COVERS NOT ALLOWED


DESCRIPTION		WIRE	BRKR	PL	KVA			PL	BRKR	WIRE	DESCRIPTION			
					A	B	C							
1	WC DISPLAY LTS/MENUBRD/LED	12	20		0.79	1.00		1	20	12	FAX '87, MGR '84C, COMP '49A	2		
3	HOOD CONTRL PNL 'M4'	12	20			0.50	0.60		1	20	MUSIC, VCR, MONITOR	4		
5	SERVICE POS '94, PTR '86A' (2,6)	12	20					1.10	0.50	1	20	12	COMPUTER RECEP '83A' (2)	6
7	D.THRU POS '94/PTRS '86A'	12	20		1.10	0.13				1	20	12	10J ICE MACHINE (6)	8
9	95-4-53, FLY LT, CO2 (1,6)	12	20			0.82	1.41			2	20	12	CHF-25 AIR CURTAIN	10
11	RICE WARMER '54A' (1,4)	12	20					0.11	1.41					12
13	REF. PREP TABLE '340' (1)	12	20		1.80	0.58				1	20	12	REAR DOOR - FLY FAN 'M8A'	14
15	REF. PREP TABLE '340' (1)	12	20			1.08	0.10			1	20	12	FIRE SUPPRESS SQUADRON	16
17	60' WORKTOP FRZR '30L' (1,4)	12	20					1.08	0.58	1	20	12	SIDE DOOR - FLY FAN 'M8C'	18
19	BEV. '44B'	12	20		1.12	1.30				1	20	10	INDUCT WELL 3F, 3G-GFI (1,4,6)	20
21	SERVING COUNTON '2Q'	12	20			1.80	1.30			1	20	10	INDUCT WELL 3F, 3G-GFI (1,4,6)	22
23	ICE TEA BREWER '9D'	12	20					1.78	1.30	1	20	10	INDUCT WELL 3F, 3G-GFI (1,4,6)	24
25	FOOD PROCESSOR '53'	12	20		1.20	1.30				1	20	10	INDUCT WELL 3F, 3G-GFI (1,4,6)	26
27	SPACE						1.30			1	20	10	INDUCT WELL 3F, 3G-GFI (1,4,6)	28
29	WALK-IN COOLER COIL '31M' (1)	12	20					0.24	1.30	1	20	10	INDUCT WELL 3F, 3G-GFI (1,4,6)	30
31	FICE HOLD CABINET '24H' (1,4,6)	10	20		1.78	1.30				1	20	10	INDUCT WELL 3F, 3G-GFI (1,4,6)	32
33	FUTURE CONTROLS (1,6)	12	20			0.20	0.84			1	20	12	RAD TOP HEATER '152B1' (1)	34
35	COKE/COMP OUTLET	12	20					0.84	1.10	1	20	12	RAD TOP HEATER '152B2' (1)	36
37	4B' BOOSTER OUTLET (6)	12	20		0.86	1.10				1	20	12	RAD TOP HEATER '152B3' (1)	38
39	HEAT WAPR '32-57' (4)	12	20			0.50	0.84			1	20	12	SPARE	40
41	FLY LIGHT (6)	12	20					0.18	1.07	1	20	12	THAWING CABINET	42
43	DUCT DETECTORS	12	20		0.20	0.96				1	20	12	GAS WATER HEATER 'P3' (6)	44
45	LTO-FOOD PREP/EN (4)	10	20			0.77				2	20	12	SPACE	46
47	LTS DINING AREA	12	20					0.85	0.90	2	20	12	MICROWAVE - 55A (1)	48
49	SHOW WINDOW REEPS	12	20		0.72	0.90								50
51	GENERAL REEPS	12	20			0.72	0.18			1	20	12	FUTURE EQUIPMENT	52
53	EXTERIOR REEPS	12	20					0.36	0.18	1	20	12	FUTURE EQUIPMENT	54
55	SPACE				0.0	1.23				2	20	12	ICE MACHINE COND. '10J-ST' (1)	56
57	10J ICE MACHINE (6)	12	20			0.13	1.23			2	20	10	8 WALK IN FRZR COND. '32-S1' (1,7)	60
59	SPACE							2.48		2	20	10	0 WALK IN COOL COND. '31-S1' (1)	62
61	ICE TEA BREWER '9D' (1,4)	10	20		1.78	2.48								64
63	LIGHTING '80W' (1,4)	12	20			0.7	1.41							66
65	WALK-IN COOL COIL '31M' (1)	12	20					0.24	1.30	1	20	10	INDUCT WELL 3F, 3G-GFI (1,4,6)	68
67	DRIVE THRU HOT WELL CABINET	6	50			5.40								70
69	SPACE	12	20											72
71	SPACE													74
73	ELECTRIC GUN	6	50		3.60									76
75	SPACE					3.60								78
77	SPACE													80
79	SPACE													82
81	SPACE													84
83	SPACE													86
TOTAL					27.73	21.18	18.57	KVA						
PER NEC ARTICLE 220					231.09	176.52	154.74	KVA					AMPS	
TOTAL LOAD					67.50			KVA					AMPS	
FEEDER LOAD					55.20			KVA					AMPS	

1. WIRE SIZE SHALL BE MINIMUM #12 W/IN. THIN SOLID COPPER UNLESS OTHERWISE NOTED. PROVIDE GROUND WIRE WHERE SHOWN OR REQUIRED BY CODE. INCREASE WIRE SIZE TO COMPENSATE FOR VOLTAGE DROP WHERE TOTAL LENGTH OF ANY BRANCH EXCEEDS 100 FEET.
2. SHORT CIRCUIT CURRENT INFORMATION FROM THE UTILITY IS NOT AVAILABLE AT THIS TIME. CONTRACTOR SHALL OBTAIN THIS INFORMATION WHEN AVAILABLE AND CALCULATE THE 3-PHASE FAULT CURRENT AT EACH PANEL USING COOPER BUSHMAN BULLETIN ED-1, "A SIMPLE APPROACH TO SHORT CIRCUIT CALCULATIONS" (2004) OR "SPD ELECTRICAL PROTECTION HANDBOOK" (2017), SECTION 4. PROVIDE PANELS WITH INTERRUPTING CAPACITIES AT LEAST 10% ABOVE CALCULATED VALUES.

PANEL BOARD GENERAL NOTES		5
	NOT TO SCALE	E-601

1. UNLESS NOTED, ALL DEVICES AND TERMINATIONS 100 AMPS AND LESS TO BE RATED FOR 60°C WIRE, OVER 100 AMPS, 75°C WIRE.
2. CONTRACTOR TO SUBMIT SERVICE ENTRANCE GEAR SHOP DRAWINGS TO SERVING UTILITY COMPANY FOR APPROVAL.
3. ALL WIRE #8 AND SMALLER TO BE THWN/THHN CU.; #6 AND LARGER TO BE XHHW CU.
4. THE DESIGN PROFESSIONAL HAS PERFORMED ALL REQUIRED LOAD CALCULATIONS AND VERIFIES THAT ALL UPSTREAM PANELS AND EQUIPMENT ARE NOT OVERLOADED.

SINGLE LINE DIAGRAM GENERAL NOTES		3
	NOT TO SCALE	E-601

1. ENTIRE INSTALLATION TO COMPLY WITH N.E.C. 110.22 AND 240.86(B).
2. NO DESIGN CHANGES MAY BE MADE TO THE SYSTEM WITHOUT THE PRIOR APPROVAL OF THE DESIGN ELECTRICAL ENGINEER AND THE ELECTRICAL INSPECTOR.
3.  TWO (2) 65/100/000 AMPERE SERIES RATING SYSTEM IS SPECIFIED BETWEEN THE SES CIRCUIT BREAKER AND THE BRANCH CIRCUIT PANEL BREAKERS, NO SUBSTITUTIONS - UNLESS A FULLY RATED SYSTEM IS PROVIDED.
4. MOTOR CONTRIBUTION TO THE FAULT CURRENT IS LESS THAN 1% OF THE INTERRUPTING RATING OF THE DOWNSTREAM CIRCUIT BREAKER(S).
5. THE ELECTRICAL CONTRACTOR SHALL PROVIDE LABELS AT ALL COMPONENTS OF THE SYSTEM PROTECTED SYSTEM:
  - A. "PANEL 'A' STATING 'CAUTION - 65/100 SERIES COMBINATION SYSTEM RATED \_\_\_\_\_ AMPERES. IDENTIFIED REPLACEMENT COMPONENTS REQUIRED'"
  - B. "PANEL 'A' STATING 'CAUTION - 22/10 SERIES COMBINATION SYSTEM RATED \_\_\_\_\_ AMPERES. IDENTIFIED REPLACEMENT COMPONENTS REQUIRED'"
  - C. "PANEL 'B' STATING 'CAUTION - 22/10 SERIES COMBINATION SYSTEM RATED \_\_\_\_\_ AMPERES. IDENTIFIED REPLACEMENT COMPONENTS REQUIRED'"
6. EQUIPMENT SUPPLIER TO PROVIDE CUT SHEETS OF ALL SERIES RATED COMPONENTS (I.E. FUSES, CIRCUIT BREAKERS) HIGHLIGHTING EACH ITEM AND THE SPECIFIC LISTING/TESTING OF EACH ITEM'S SERIES RATING WITH THE OTHER.
7. POST THIS INFORMATION ON THE JOB-SITE WITH PERMIT FOR CITY ELECTRICAL INSPECTOR'S REVIEW/APPROVAL.

SERIES RATING NOTES		4
	NOT TO SCALE	E-601

PNL B PANELBOARD (NEW) 208Y/120V, 3PH, 4W  
 MOUNTING: FLUSH  
 LOCATION: ELEC. CABINET  
 TYPE: BOLT ON W/ROUND BUS  
 NEMA RATING: 1

INTERIOR PANELBOARDS SHALL BE RECESSED WITH FLANGED/REMOVABLE SCREW-ON COVER. SURFACE MOUNTED PANELBOARDS OR HINGED/FLUSH TYPES NOT ALLOWED

SERIES RATED 65/10K A.I.C. 225A M.L.O.  
 GROUND BUS

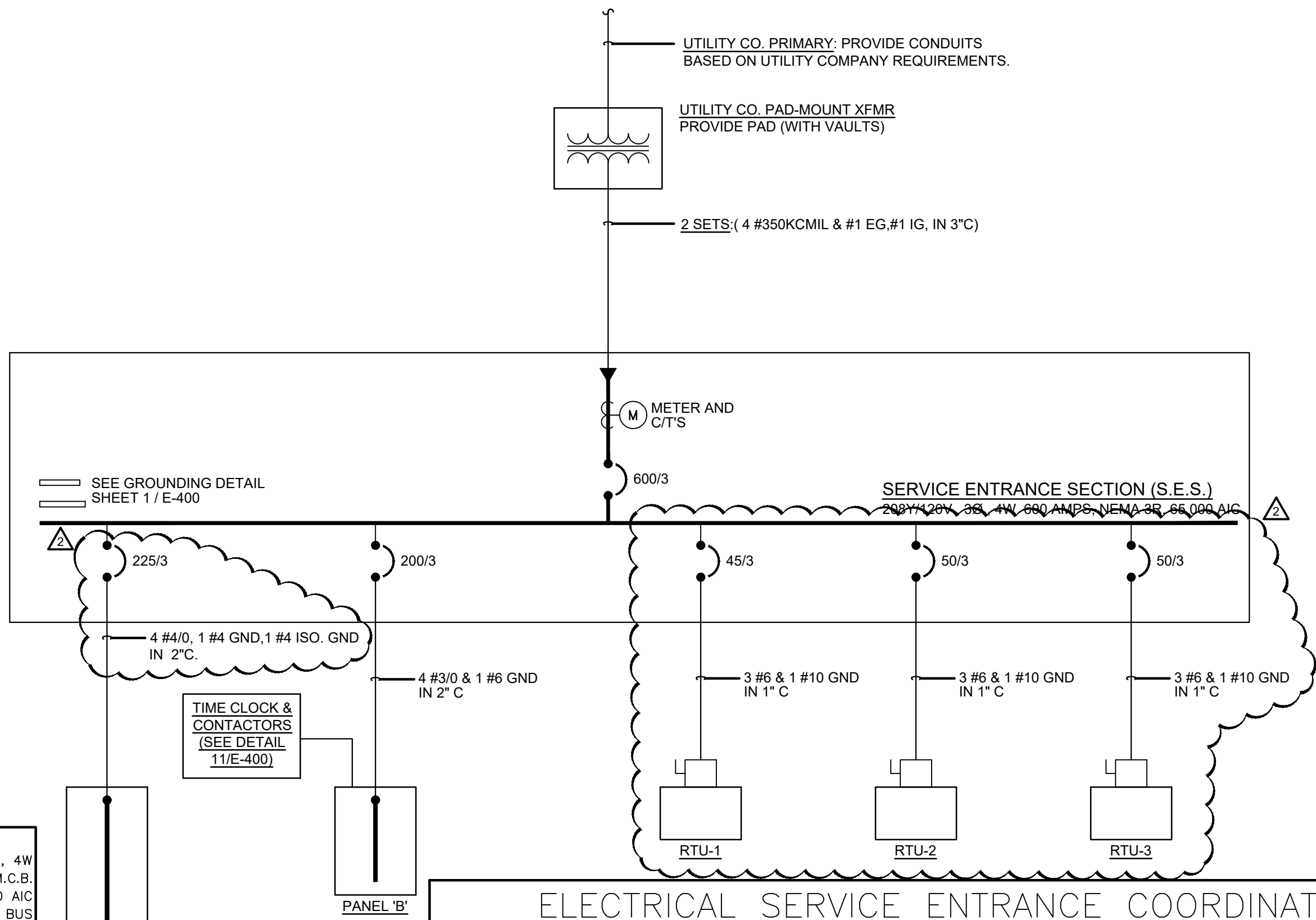
DESCRIPTION				WIRE			BRKR			PL			KVA			PL			BRKR			WIRE			DESCRIPTION		
													A			B			C								
1	LOGO "S2"/D. SIGN "S1" (3)	12	20	1	20	1	1.20	1.23											2	20	10	ICE MACHINE COND. "10J-S1" (4)	2	20	10		
2	EX. CABLE MOUNTED LTG. (3)	8	20	1	20	1			0.59	1.23																	
3	TIME CLOCK-A & B & C	12	20	1	20	1					0.02	0.90							1	20	12	RIB NUTS FRYSER (1-6)	3	60	6		
5	TURKEY STEAK COOKING	12	20	1	20	1	0.18	5.64											3	60	6	DISH WASHER					
7	4AB	12	20	1	20	1			1.12	5.64																	
9	SECURITY/POS MONITORS	12	20	1	20	1					0.25	5.64															
11	HYPERTACTIC TIMER SYS.	12	20	1	20	1	0.36	0.22																			
13	BUILDING TV'S	12	20	1	20	1			0.26	1.50									1	20	10	MENUBOARD (3,4)	1	20	10		
15	TIME CLOCK-D & E	12	20	1	20	1					0.01	1.00							1	20	10	DR THRU ORDER SCREEN(4)	1	20	10		
17	EX. FLOOR MOUNTED LTG (3)	12	20	1	20	1	0.74	2.57											3	30	10	CU-2					
19	S.PARE	12	20	1	20	1			0.00	2.57																	
21	BUILDING LTG/EM (3)	12	20	1	20	1					1.53	2.87															
23	MENUBOARD (3,4)	10	20	1	20	1	1.50	1.32											3	20	12	EF-1					
25	DR THRU ORDER SCREEN(4)	10	20	1	20	1			1.00	1.32																	
27	RTU CONVENIENCE OUTLETS	12	20	1	20	1					0.54	1.32															
29	EXT.SCOURCE & CONVEY LTS.(3)	12	20	1	20	1	0.36	0.94											3	20	12	EF-2					
31	EXT. SCOURCE & CONVEY LTS.(3)	12	20	1	20	1			0.36	0.94																	
33	RECEPTACLE	12	20	1	20	1					0.18	0.94															
35	CU-1	10	30	1	30	1	2.57	2.10											3	30	12	MA-1					
37	-	-	-	-	-	-																					
39	-	-	-	-	-	-			2.57	2.10																	
41	-	-	-	-	-	-					2.57	2.10															
TOTAL							21.00		21.20			19.50	KVA														
							174.77		176.67			162.88	AMPS														
TOTAL LOAD							61.70	KVA			171.43	AMPS															
FEEDER LOAD							62.60	KVA			173.80	AMPS															

PER NEC ARTICLE 220

PER NEC ARTICLE 220

TOTAL LOAD		FEEDER LOAD	
1	2	3	4
5	6	7	8
9	10	11	12
13	14	15	16
17	18	19	20
21	22	23	24
25	26	27	28
29	30	31	32
33	34	35	36
37	38	39	40
41	42	43	44
45	46	47	48
49	50	51	52
53	54	55	56
57	58	59	60
61	62	63	64
65	66	67	68
69	70	71	72
73	74	75	76
77	78	79	80
81	82	83	84
85	86	87	88
89	90	91	92
93	94	95	96
97	98	99	100

PANEL SCHEDULES	1
NOT TO SCALE	E-60



ELECTRICAL SERVICE ENTRANCE COORDINATION				
NEW SERVICE REQUIRED: 600A, 120/208V, 3 PHASE, 4 WIRE			UTILITY COMPANY: HUNTSVILLE UTILITIES	
SERVICE TO BUILDING ROUTED: UNDERGROUND			NAME OF CONTACT: JERMAINE D. STEWART	
AVAILABLE FAULT CURRENT:			PHONE: 256-535-1459	
METERING LOCATION: EXTERIOR BUILDING			EMAIL: JERMAINE.STEWART@HVSUTIL.ORG	
ITEMS	CONTRACTOR		UTILITY COMPANY	
	FURNISHED BY	INSTALLED BY	FURNISHED BY	INSTALLED BY
PRIMARY CONDUCTORS			X	X
PRIMARY TERMINATIONS			X	X
PRIMARY CONDUIT(S)	X	X		
PRIMARY TRENCH/BACKFILL	X	X		
TRANSFORMER -(CONTRACTOR TO PROVIDE PAD PER/UTILITY REQ'S.)			X	X
SECONDARY CONDUCTORS (FROM XFMR TO UTILITY METER)	X	X		
SECONDARY TERMINATIONS @ TRANSFORMER (GC PROVIDE LUGS)			X	X
SECONDARY TERMINATIONS @ SERVICE ENTRANCE	X	X		
SECONDARY CONDUIT	X	X		
SECONDARY TRENCH/BACKFILL	X	X		
METERING CT'S - SELF CONTAINED METER	X	X		
METER HOUSING- PROVIDES TO CONTRACTOR AT NO CHARGE	X	X		

1. CONTRACTOR TO FIELD VERIFY AND COORDINATE THEIR RESPONSIBILITIES FOR ELECTRICAL SERVICE ENTRANCE WITH ELECTRICAL SERVICE PROVIDER; AND PROVIDE BID WITH ALL ASSOCIATED COSTS WITH NO ADDITIONAL COST TO OWNER.

SINGLE LINE DIAGRAM		2
	NOT TO SCALE	E-60



**PANDA EXPRESS, INC.**  
1683 Walnut Grove Ave.  
Rosemead, California  
91770  
Telephone: 626.799.9898  
Facsimile: 626.372.8288

All ideas, designs, arrangement and plans indicated or represented by this drawing are the property of Panda Express Inc. and were created for use on this specific project. None of these ideas, designs, arrangements or plans may be used by or disclosed to any person, firm, or corporation without the written permission of Panda Express Inc.

REVISIONS:

1	OWNER REVISION	11-08-2
2	OWNER REVISION	01-07-2

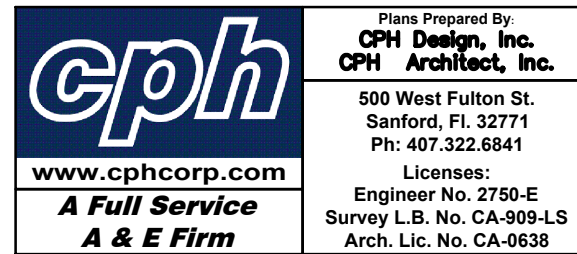
ISSUE DATE:

1	CHECK SET	07-19-2017
2	PERMIT SET	09-17-2017
3	BID SET	11-08-2017
4	BID SET REISSUE	01-14-2018

DRAWN BY: KTF

PANDA PROJECT #: S8-22-D8433

ARCH PROJECT #: P7363



1/14/2022

PANDA EXPRESS

TRUE WARM & WELCOME 2300  
101 STADIUM WAY  
MADISON, AL 35758

E-601

PANELS, SINGLE LINE, LOAD CALC'S

TRUE WARM & WELCOME 2300 R5

This item has been electronically signed and sealed by Gregory D. Taylor, P.E. on January 14, 2022 using a digital signature.