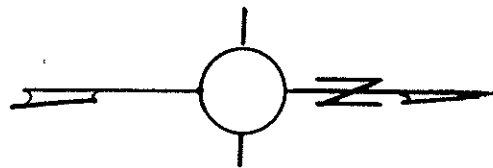
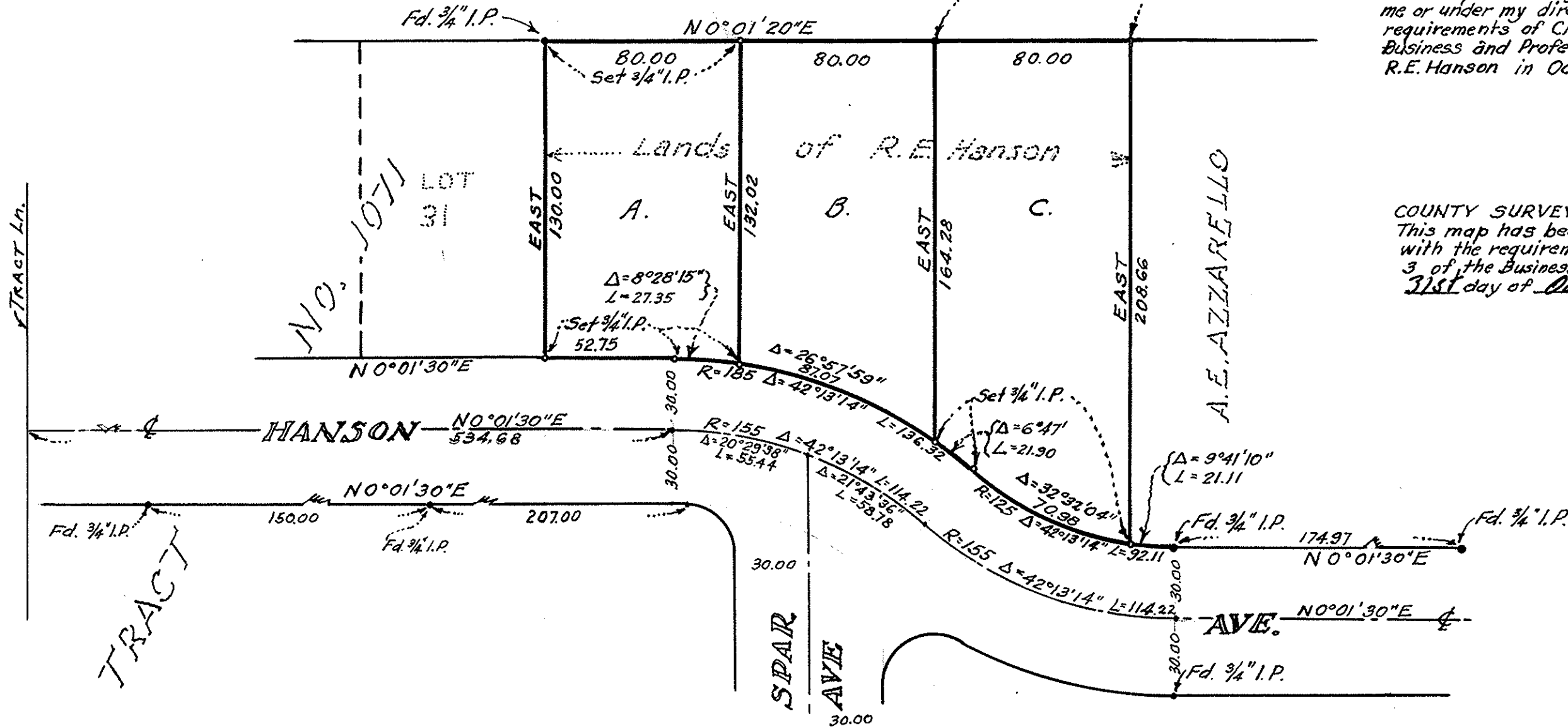


BASIS OF BEARING
The East line of Hanson Ave
as shown on the map of Tract No. 1071.



TR. NO. 891 WINCHESTER TR.



ENGINEERS CERTIFICATE
This map correctly represents a survey made by
me or under my direction in conformance with the
requirements of Chapter 15 of Division 3 of the
Business and Professions Code at the request of
R.E. Hanson in October 8, 1957.

Edward D. Stafford
R.C.E. No. 664

COUNTY SURVEYOR'S CERTIFICATE
This map has been examined for conformance
with the requirements of Chapter 15 of Division
3 of the Business and Professions Code this
31st day of Oct 1957

JAMES B. ENOCHS
Acting County Surveyor
by Deputy *[Signature]*

1400430

RECORDERS CERTIFICATE
Filed for record this 13th day of Nov. 1957
at 2:33 p.m. in Book 87 of Maps at page
42 at the request of E.S. Stafford

#500 SYL. C. TULLY
County Recorder
by Deputy *E.B.O'Brien*

RECORD OF SURVEY

OF THE
R. E. HANSON
PROPERTY
BEING A PORTION OF SECTION 15
T. 7 S. R. 1 W. SANTA CLARA CO. CALIF.

ENGINEERING OFFICE OF
L. CEDRIC MACABEE
CONSULTING ENGINEERS
45 N. FIRST STREET
SAN JOSE, CALIFORNIA.

SCALE 1"=50' OCTOBER 1957.

FB. S.J.O. 100 Job No. S-7007

This map correctly represents a survey made under my direction
in conformance with the requirements of Chapter 15 of Division 3 of
the Business and Professions Code at the request of John Novakovich
in October, 1957.

Mark Thomas
Registered Civil Engineer No. 2578

The bearing (S 61° 01' 45" E) of the center line of Fleming Avenue as
shown on map of Tract No. 552, recorded in Book 20 of Maps, pages
14 and 15, was used as basis of bearings shown upon this map.
All distances and dimensions are shown in feet and decimals thereof.

This map has been examined for conformance with the require-
ments of Chapter 15 of Division 3 of the Business and Professions
Code this 28th day of Oct. 1957.

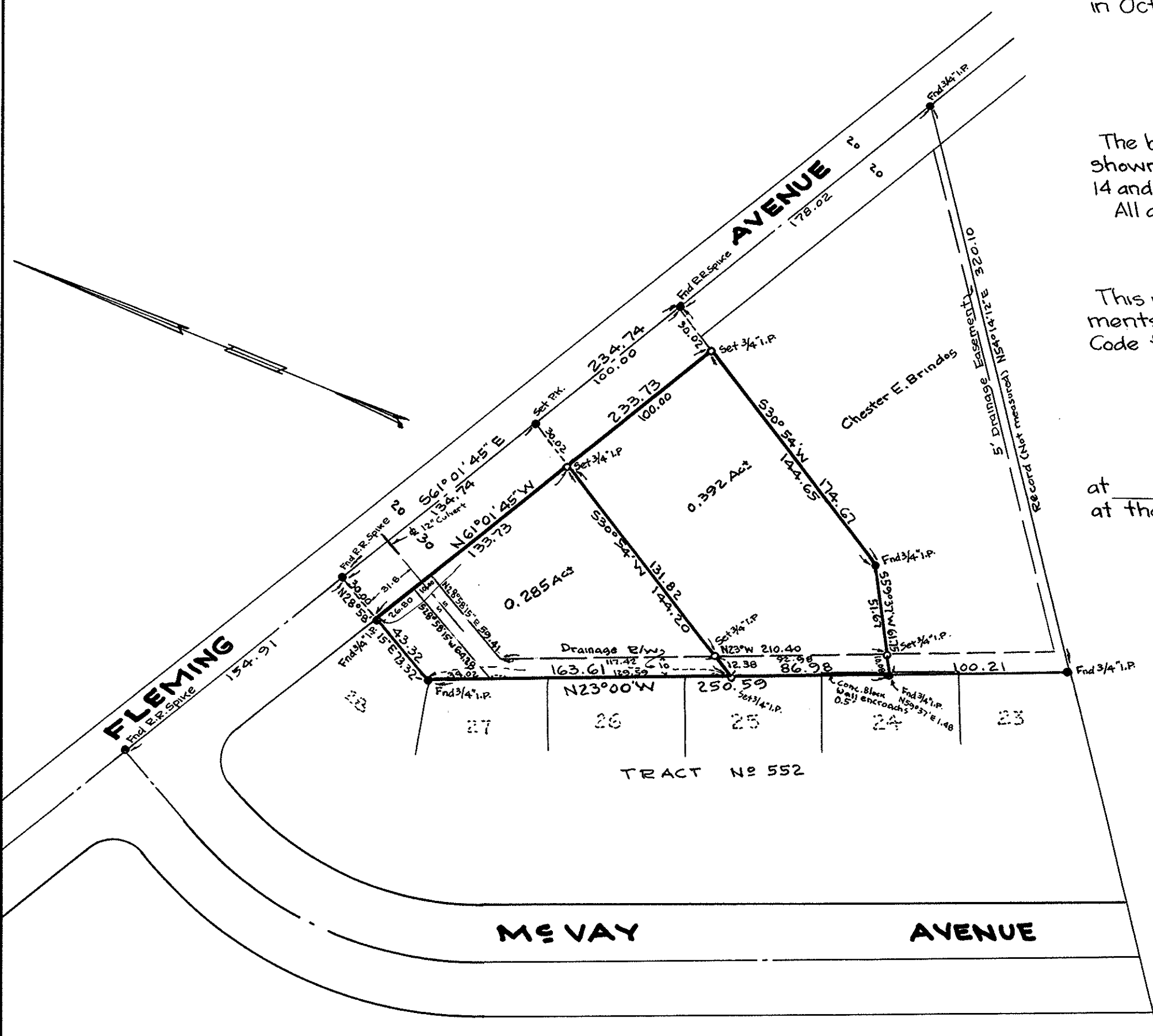
James B. Enoch, Acting County Surveyor

By *[Signature]* Deputy

1398949

Filed for record this 30th day of October 1957
at 8:01 A.M. in Book 87 of Maps, at page 42
at the request of Mark Thomas & Co.

#500 Syl C. Tully, County Recorder
By *E.B.O'Brien*
Act. Recorder



RECORD OF SURVEY
IN
PUEBLO TRACT NO. 1
SANTA CLARA COUNTY CALIFORNIA
FOR
JOHN NOVAKOVICH
SCALE - 1"=60' OCTOBER, 1957

MARK THOMAS & CO.
CIVIL ENGINEERS & SURVEYORS
SAN JOSE CALIFORNIA