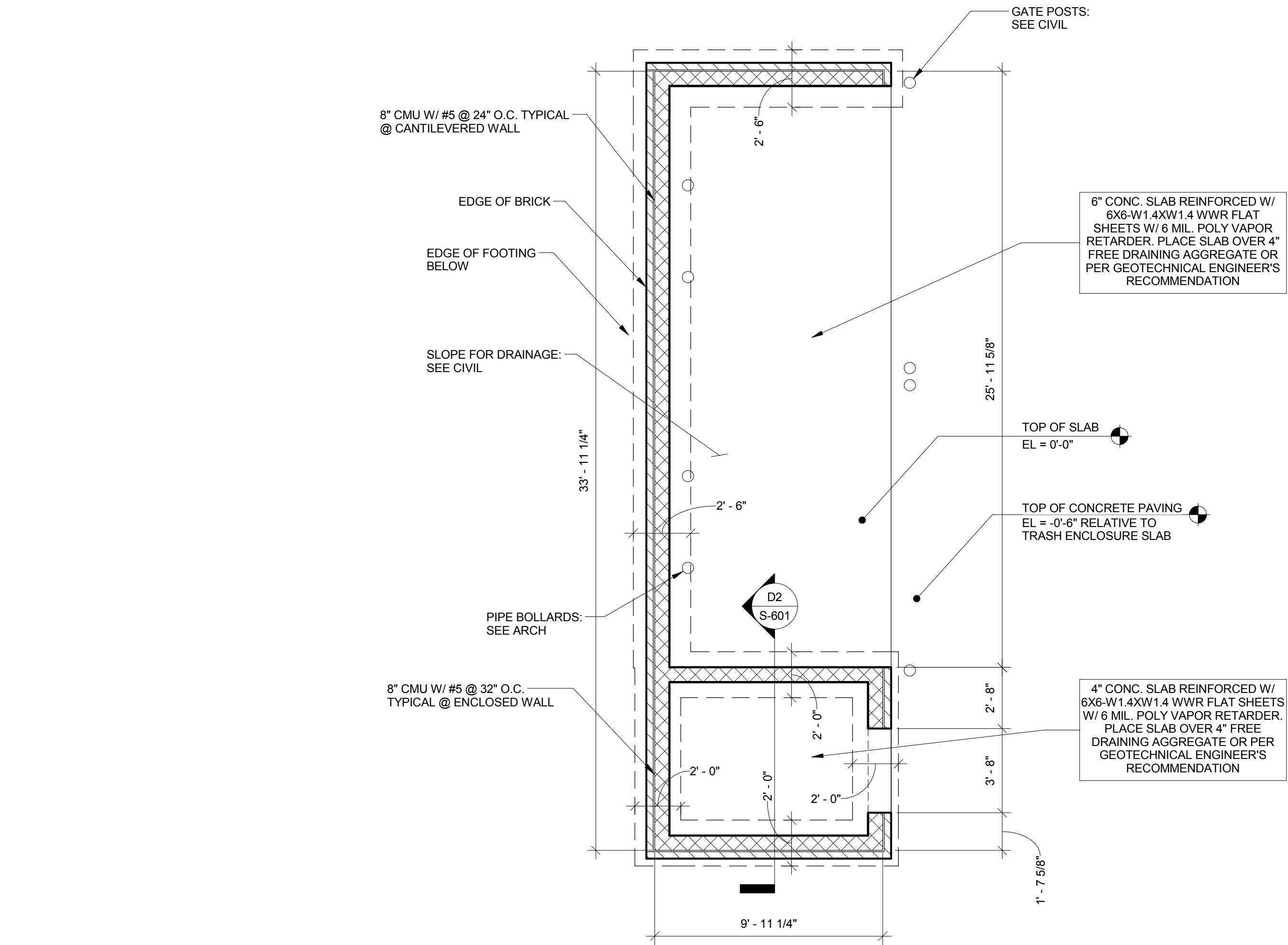


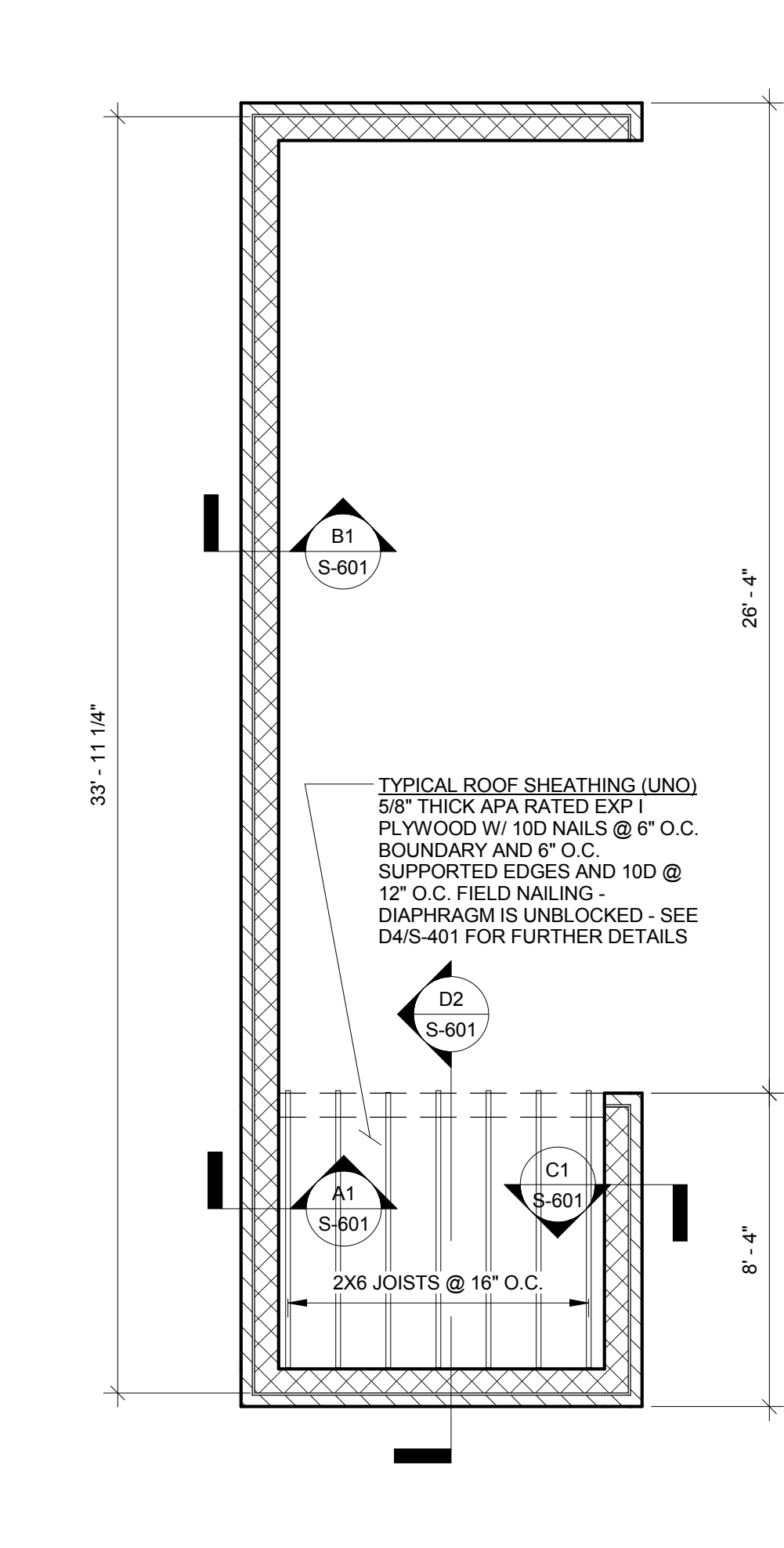
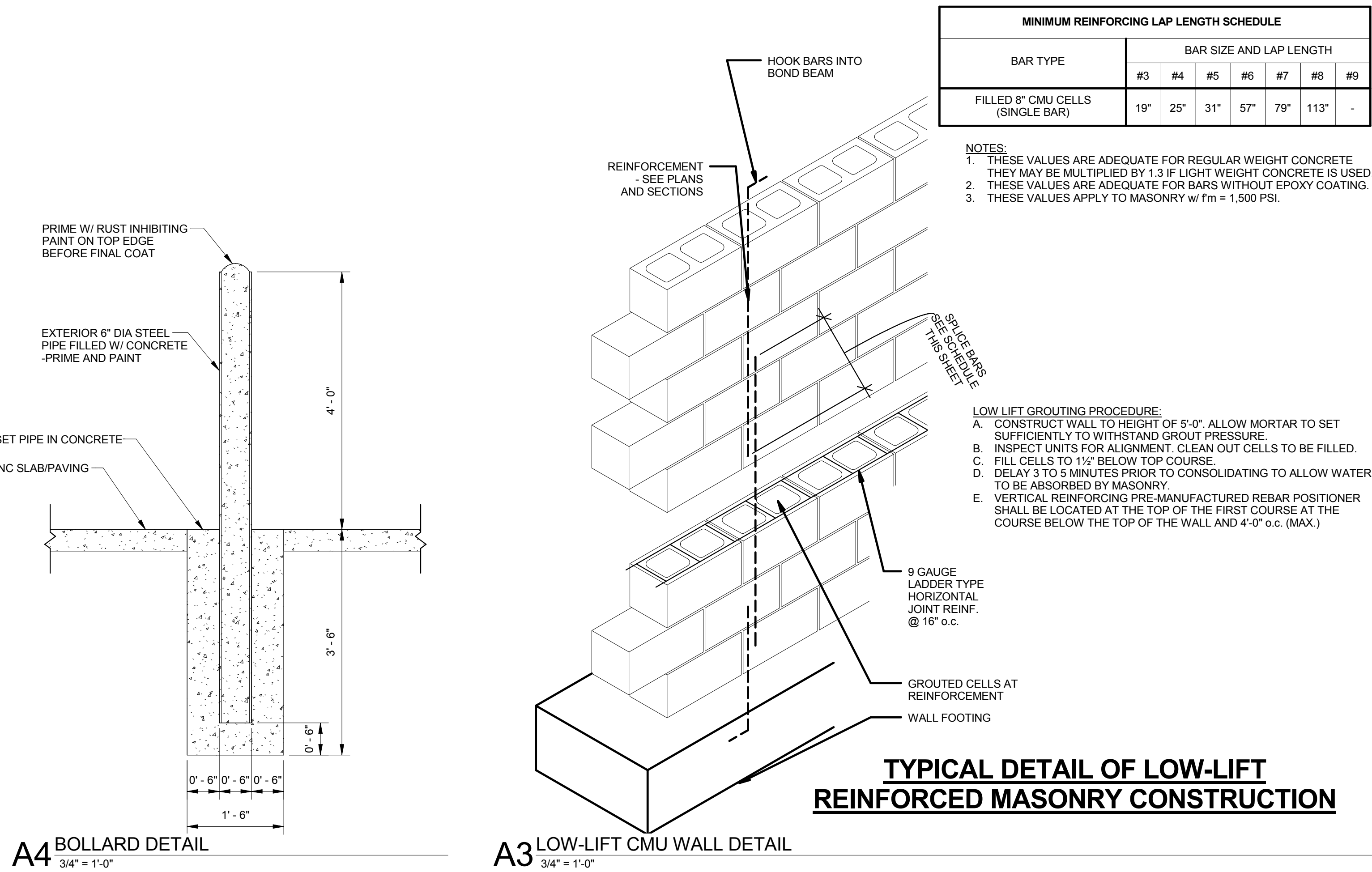
3/5/2018 5:31:51 PM

E
D
C
B
A



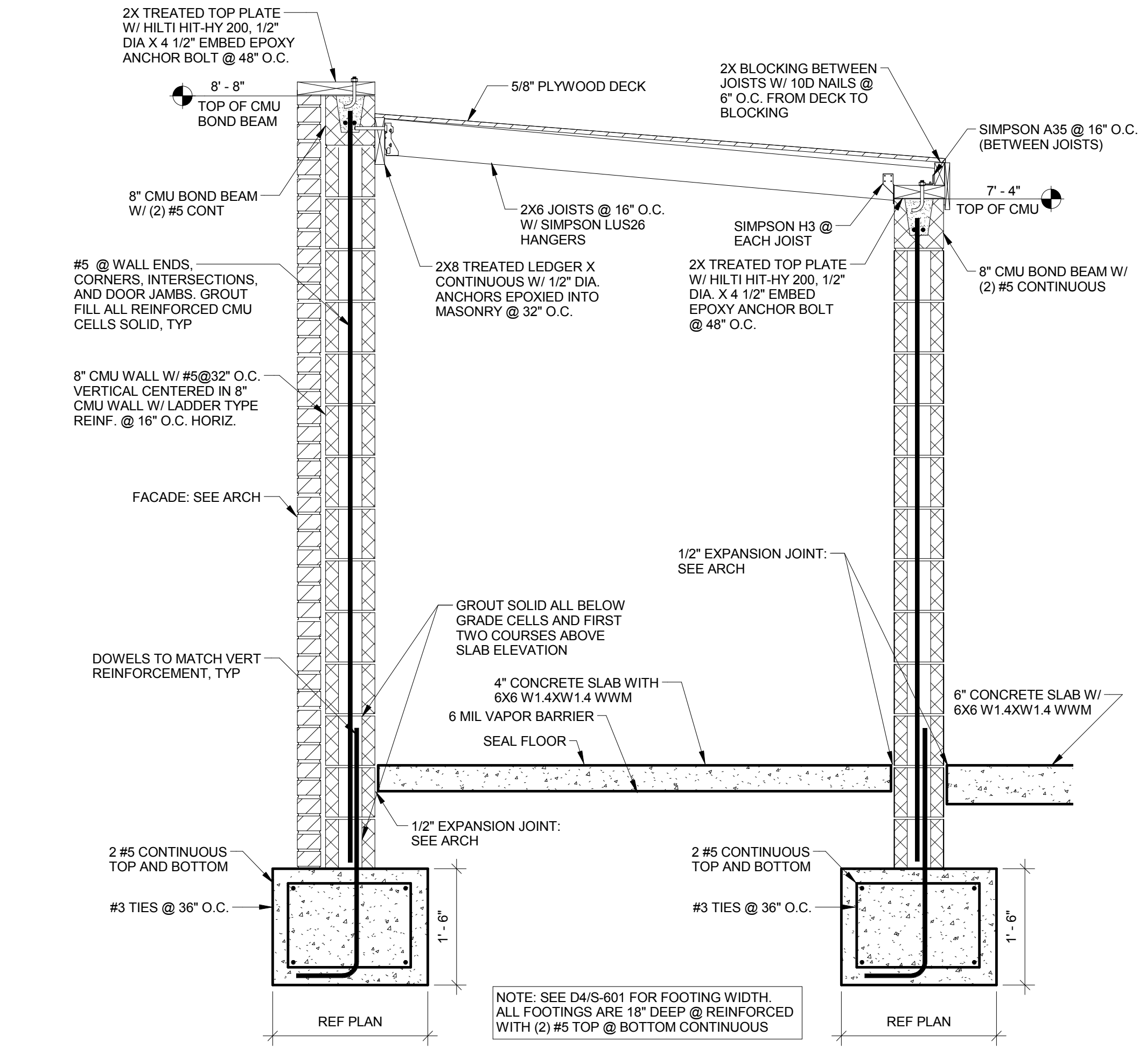
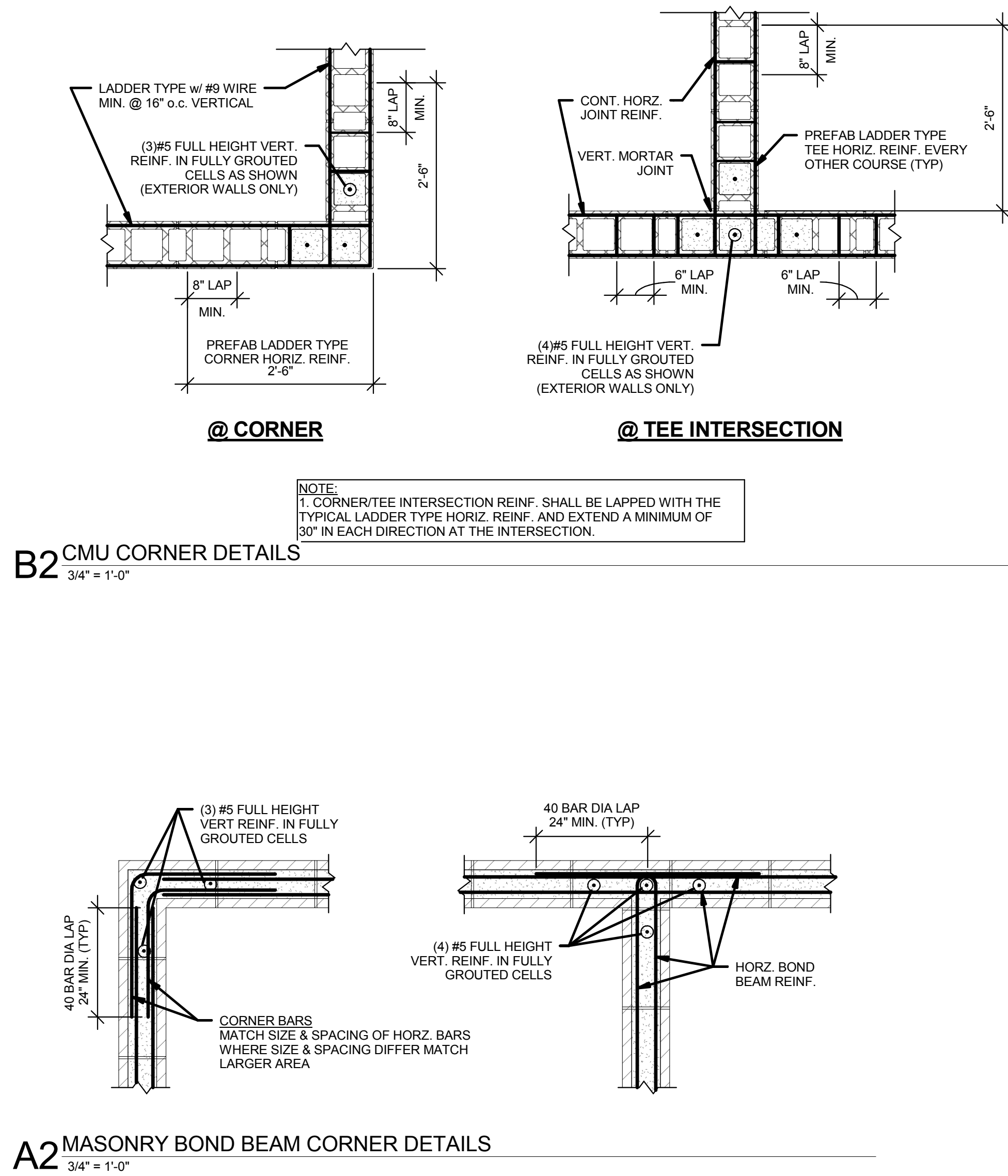
- D4 FOUNDATION PLAN**
1/4" = 1'-0"
1. BOTTOM OF EXTERIOR FTG = 1'-6" BELOW FINISH GRADE ELEV UNO
 2. SEE ARCH DWG FOR ANY WALL LOCATIONS AND OR DIMENSIONS NOT SHOWN.
 3. SEE DETAIL D4/S-301 FOR SLAB CONTROL JOINTS.
 4. WHERE FOOTING STEPS ARE NECESSARY, THEY SHALL BE NO STEEPER THAN 1 VERTICAL TO 2 HORIZONTAL, UNLESS SHOWN OTHERWISE ON PLANS.
 5. ALL SAW CUT CONTROL JOINTS SHALL BE COMPLETED WITHIN 12 HOURS AFTER FINISHING SLAB WITHOUT DISLODGING AGGREGATE.
 6. ALL ANCHORS, CLIPS, STRAPS & ETC WHICH ARE IN CONTACT WITH COPPER BASED TREATED WOOD, SUCH AS ACQ, CBA OR SBX AND ARE LESS THAN 3/8" THICK, SHALL BE SIMPSON ZMAX (G185), STAINLESS STEEL OR AN ENGINEERED APPROVED EQUAL.
 7. ALL FASTENERS WHICH ARE IN CONTACT WITH COPPER BASED TREATED WOOD, SUCH AS ACQ, CBA OR SBX, AND ARE LESS THAN 3/8" DIAMETER SHALL BE G185 (A HEAVY COATED GALVANIZED) STAINLESS STEEL OR AN ENGINEERED APPROVED EQUAL.
 8. FOUNDATION DESIGN IS BASED ON THE FOLLOWING ASSUMPTIONS. A GEOTECHNICAL ENGINEER SHALL BE EMPLOYED PRIOR TO THE START OF CONSTRUCTION TO INVESTIGATE SUBSURFACE CONDITIONS. IF THE GEOTECHNICAL REPORT INDICATES THAT THESE ASSUMPTIONS LISTED BELOW ARE INCORRECT PLEASE NOTIFY ENGINEER IMMEDIATELY.
 9. INDIVIDUAL FOOTINGS ARE DESIGNED TO BEAR ON UNIFORM SOIL, CAPABLE OF SUPPORTING 3000 PSF. CONTINUOUS FOOTINGS ARE DESIGNED TO BEAR ON SOIL CAPABLE OF SUPPORTING 3000 PSF. DESIGN ASSUMES DIFFERENTIAL AND TOTAL SETTLEMENT ARE WITHIN ACCEPTED TOLERANCES FOR THE TYPE OF CONSTRUCTION USED.
 10. THE SOIL BEARING CAPACITY AND CONSISTENCY SHALL BE VERIFIED FOR THE BUILDING LIMITS BY A REGISTERED GEOTECHNICAL ENGINEER WHEN FOUNDATION EXCAVATIONS HAVE BEEN CARRIED DOWN TO THE PROPOSED ELEVATIONS, THE BOTTOM OF ALL EXTERIOR FOOTINGS SHALL BE 1'-6" MINIMUM BELOW FINISHED GRADE.
 11. WHERE FOOTING EXCAVATIONS ARE TO REMAIN OPEN AND MAY BE EXPOSED TO RAINFALL, THE EXCAVATIONS SHALL BE UNDERCUT AND A 4" INCH THICK MID MAT OF 2000 PSI CONCRETE SHALL BE PLACED IN THE BOTTOM TO PROTECT THE BEARING SOILS PER GEOTECHNICAL ENGINEERS RECOMMENDATIONS.
 12. SEE D4/S-601 FOR FOOTING WIDTH. ALL FOOTINGS ARE 18" DEEP & REINFORCED WITH (2) #5 TOP AND BOTTOM CONTINUOUS.

C4 FOUNDATION NOTES
1" = 1'-0"

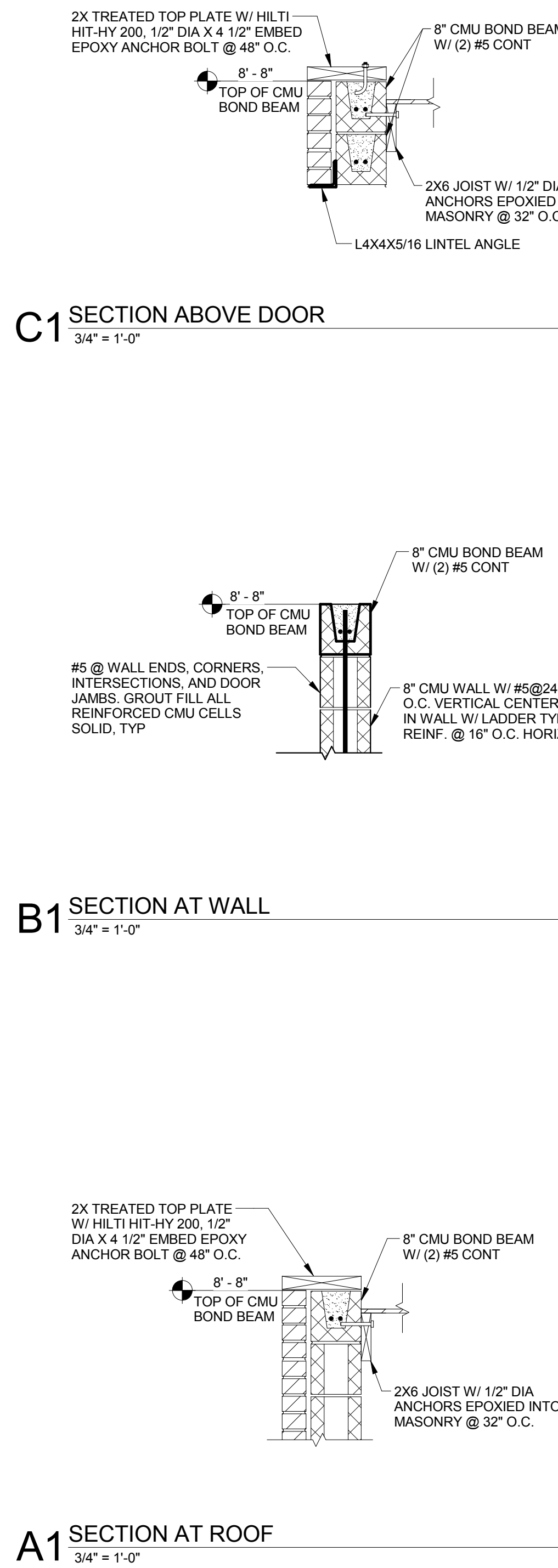


D3 ROOF FRAMING PLAN
1/4" = 1'-0"

- C3 FRAMING NOTES**
1" = 1'-0"
1. SEE DETAIL D4/S-401 FOR ROOF NAILING.
 2. FOR ADDITIONAL NAILING REQUIREMENTS SEE SCHEDULE ON S6.1.
 3. ALL ACHORS, CLIPS, STRAPS & ETC WHICH ARE IN CONTACT WITH COPPER BASED TREATED WOOD, SUCH AS ACQ, CBA OR SBX, AND ARE LESS THAN 3/8" THICK, SHALL BE SIMPSON ZMAX (G185) STAINLESS STEEL OR AN ENGINEERED APPROVED EQUAL.
 4. ALL FASTENERS WHICH ARE IN CONTACT WITH COPPER BASED TREATED WOOD, SUCH AS ACQ, CBA OR SBX, AND ARE LESS THAN 3/8" DIAMETER, SHALL BE G185 (A HEAVY COATED GALVANIZED) STAINLESS OR AN ENGINEERED APPROVED EQUAL.



D2 REFUSE ENCLOSURE SECTION
3/4" = 1'-0"



C1 SECTION ABOVE DOOR
3/4" = 1'-0"

B1 SECTION AT WALL
3/4" = 1'-0"

A1 SECTION AT ROOF
3/4" = 1'-0"

Chick-Fil-A
5200 Buffington Road
Atlanta, Georgia 30349-2998

INTERPLAN
ARCHITECTURE
ENGINEERING
INTERIOR DESIGN
PROJECT MANAGEMENT
604 COURTLAND STREET
SUITE 100
ORLANDO, FLORIDA 32804
PH 407.645.5008
FX 407.629.9124

**BRITT, PETERS
ASSOCIATES**
CONSULTING ENGINEERS
999 WATERSIDE DRIVE
SUITE 2202
NORFOLK, VA 23510
PH 757.965.5710
BPA# 180269

SEAL:
THIS DOCUMENT IS **NOT FOR CONSTRUCTION!**
UNLESS THE ARCHITECT OR ENGINEER'S
SIGNATURE AND SEAL APPEAR BELOW.

CHICK-FIL-A
JOHNS CREEK FSR
3643 PEACHTREE PARKWAY, SUWANEE,
GA 30024

FSR# 00593

REVISION SCHEDULE		
NO.	DATE	DESCRIPTION

ENGINEER'S PROJECT # 180269	
PRINTED FOR	PERMIT
DATE	FEBRUARY 2018
DRAWN BY	Designer

Information contained on this drawing and in all digital files produced for above named project may not be reproduced in any manner without express written or verbal consent from the project representations.

PERMIT

SHEET
REFUSE ENCLOSURE
PLANS & DETAILS

SHEET NUMBER
S-601